

# Arizona High School Enrollment Figures

## (1912-2005)

*\*Enrollment figures of Mesa schools from 1984-present include ninth-grade classes in junior high feeder schools.*

### ACADEMY OF TUCSON

**"Lynx"**

2005 ....179

### AGUA FRIA (AVONDALE)

**"Owls"**

2005 ....1,748  
 2004 ....1,690  
 2003 ....1,511  
 2002 ....1,463  
 2001 ....1,293  
 2000 ....1,374  
 1999 ....1,355  
 1998 ....1,837  
 1997 ....1,730  
 1996 ....1,549  
 1995 ....1,477  
 1994 ....1,453  
 1993 ....1,434  
 1992 ....1,496  
 1991 ....1,494  
 1990 ....1,494  
 1989 ....1,560  
 1988 ....1,502  
 1987 ....1,502  
 1986 ....1,465  
 1985 ....1,410  
 1984 ....1,349  
 1983 ....1,355  
 1982 ....1,391  
 1981 ....1,411  
 1980 ....1,427  
 1979 ....1,436  
 1978 ....1,355  
 1977 ....1,306  
 1976 ....1,406  
 1975 ....1,320  
 1974 ....1,237  
 1973 ....1,206  
 1972 ....1,041  
 1971 .... 911  
 1970 .... 818  
 1969 .... 783  
 1968 .... 730  
 1967 .... 709  
 1966 .... 606  
 1965 .... 672  
 1964 .... 700  
 1963 .... 626  
 1962 .... 606  
 1961 .... 586

1960 .... 511  
 1959 .... 481  
 1958 .... 458  
 1957 .... 424

### AJO

**"Red Raiders"**

2005 ....157  
 2004 ....169  
 2003 ....147  
 2002 ....134  
 2001 ....144  
 2000 ....141  
 1999 ....158  
 1998 ....158  
 1997 ....151  
 1996 ....183  
 1995 ....190  
 1994 ....177  
 1993 ....174  
 1992 ....187  
 1991 ....175  
 1990 ....184  
 1989 ....214  
 1988 ....243  
 1987 ....266  
 1986 ....272  
 1985 ....371  
 1984 ....369  
 1983 ....366  
 1982 ....448

1981 ....453  
 1980 ....463  
 1979 ....454  
 1978 ....489  
 1977 ....487  
 1976 ....550  
 1975 ....561  
 1974 ....576  
 1973 ....592  
 1972 ....587  
 1971 ....596  
 1970 ....589  
 1969 ....583  
 1968 ....598  
 1967 ....564  
 1966 ....552  
 1965 ....558  
 1964 ....522  
 1963 ....499  
 1962 ....443  
 1961 ....270  
 1960 ....298  
 1959 ....290  
 1958 ....291  
 1957 ....274  
 1956 ....400  
 1955 ....440  
 1954 ....400  
 1953 ....374  
 1952 ....340  
 1951 ....325



**Original Ajo High School**

1950 ....256  
 1949 ....239  
 1948 ....223  
 1947 ....213  
 1946 ....202  
 1945 ....172  
 1944 ....126  
 1943 ....196  
 1942 ....225  
 1941 ....184  
 1940 ....177  
 1939 ....150  
 1938 ....145  
 1937 ....135  
 1936 ....124  
 1935 ....90  
 1934 ....56  
 1933 ....54  
 1932 ....100  
 1931 ....95  
 1930 ....85  
 1929 ....75  
 1928 ....72  
 1927 ....47  
 1926 ....36  
 1925 ....27  
 1924 ....27  
 1923 ....30  
 1922 ....32  
 1921 ....34  
 1920 ....(unk.)  
 1919 ....(unk.)  
 1918 ....7

**ALCHESAY (WHITERIVER)**  
**“Falcons”**

2005 ....721  
 2004 ....738  
 2003 ....675  
 2002 ....697  
 2001 ....723  
 2000 ....726  
 1999 ....725  
 1998 ....646  
 1997 ....603  
 1996 ....522  
 1995 ....443  
 1994 ....450  
 1993 ....422  
 1992 ....455  
 1991 ....445  
 1990 ....426  
 1989 ....448  
 1988 ....458  
 1987 ....468  
 1986 ....470  
 1985 ....453  
 1984 ....466  
 1983 ....458  
 1982 ....440  
 1981 ....480

1980 ....422  
 1979 ....410  
 1978 ....400  
 1977 ....390  
 1976 ....382  
 1975 ....362  
 1974 ....309  
 1973 ....302  
 1972 ....280  
 1971 ....242  
 1970 ....227  
 1969 ....210  
 1968 ....217  
 1967 ....206

**ALHAMBRA (PHOENIX)**

**“Lions”**

2005 ....2,845  
 2004 ....2,610  
 2003 ....2,548  
 2002 ....2,495  
 2001 ....2,544  
 2000 ....2,530  
 1999 ....2,505  
 1998 ....2,420  
 1997 ....2,076  
 1996 ....2,034  
 1995 ....1,956  
 1994 ....1,911  
 1993 ....1,841  
 1992 ....1,858  
 1991 ....1,859  
 1990 ....2,078  
 1989 ....2,316  
 1988 ....2,308  
 1987 ....2,701  
 1986 ....2,371  
 1985 ....2,350

1984 ....2,562  
 1983 ....2,801  
 1982 ....2,527  
 1981 ....2,782  
 1980 ....2,980  
 1979 ....3,375  
 1978 ....3,547  
 1977 ....3,636  
 1976 ....3,786  
 1975 ....3,697  
 1974 ....3,701  
 1973 ....3,615  
 1972 ....3,619  
 1971 ....3,532  
 1970 ....3,425  
 1969 ....3,489  
 1968 ....3,493  
 1967 ....3,349  
 1966 ....3,193  
 1965 ....3,123  
 1964 ....2,735  
 1963 ....1,975

**AMPHITHEATER (TUCSON)**

**“Panthers”**

2005 ....1,670  
 2004 ....1,688  
 2003 ....1,676  
 2002 ....1,792  
 2001 ....2,020  
 2000 ....2,010  
 1999 ....1,930  
 1998 ....2,021  
 1997 ....1,980  
 1996 ....1,911  
 1995 ....2,023  
 1994 ....1,887  
 1993 ....2,091



*Amphitheater High School*

1992 ....2,276  
 1991 ....2,382  
 1990 ....2,507  
 1989 ....2,513  
 1988 ....2,542  
 1987 ....2,560  
 1986 ....2,402  
 1985 ....2,241  
 1984 ....2,162  
 1983 ....2,068  
 1982 ....2,010  
 1981 ....2,025  
 1980 ....2,004  
 1979 ....2,039  
 1978 ....(unk.)  
 1977 ....(unk.)  
 1976 ....1,668  
 1975 ....1,644  
 1974 ....1,595  
 1973 ....1,597  
 1972 ....1,527  
 1971 ....1,457  
 1970 ....1,351  
 1969 ....1,402  
 1968 ....1,456  
 1967 ....1,606  
 1966 ....1,474  
 1965 ....1,859

**ANTELOPE (WELLTON)**

**“Rams”**

2005 ....361  
 2004 ....350  
 2003 ....348  
 2002 ....355  
 2001 ....353  
 2000 ....366  
 1999 ....382  
 1998 ....386  
 1997 ....382  
 1996 ....363  
 1995 ....385  
 1994 ....381  
 1993 ....376  
 1992 ....355  
 1991 ....321  
 1990 ....327  
 1989 ....315  
 1988 ....293  
 1987 ....272  
 1986 ....293  
 1985 ....317  
 1984 ....340  
 1983 ....290  
 1982 ....301  
 1981 ....292  
 1980 ....280  
 1979 ....300  
 1978 ....325  
 1977 ....307  
 1976 ....312

1975 ....250  
 1974 ....277  
 1973 ....244  
 1972 ....239  
 1971 ....236  
 1970 ....228  
 1969 ....207  
 1968 ....185  
 1967 ....174  
 1966 ....155  
 1965 ....160  
 1964 ....145  
 1963 ....150  
 1962 ....140  
 1961 ....155  
 1960 ....143  
 1959 ....132  
 1958 ....106  
 1957 ....93  
 1956 ....94  
 1955 ....82  
 1954 ....69

**APACHE JUNCTION**

**“Prospectors”**

2005 ....1,542  
 2004 ....1,504  
 2003 ....1,507  
 2002 ....1,467  
 2001 ....1,387  
 2000 ....1,297  
 1999 ....1,228  
 1998 ....1,235  
 1997 ....1,167  
 1996 ....1,189  
 1995 ....1,150  
 1994 ....1,084  
 1993 ....1,061  
 1992 ....1,041

1991 .... 955  
 1990 .... 944  
 1989 .... 905  
 1988 .... 881  
 1987 .... 972  
 1986 .... 913  
 1985 .... 908  
 1984 .... 845  
 1983 .... 765  
 1982 .... 709  
 1981 .... 744  
 1980 .... 775  
 1979 .... 749  
 1978 .... 637  
 1977 .... 630  
 1976 .... 575  
 1975 .... 446  
 1974 .... 367  
 1973 .... 311  
 1972 .... 263  
 1971 .... 226  
 1970 .... 172  
 1969 .... 196  
 1968 .... 151  
 1967 .... 129  
 1966 .... 115  
 1965 .... 107  
 1964 .... 112  
 1963 .... 104

**APOLLO (GLENDALE)**

**“Hawks”**

2005 ....1,794  
 2004 ....1,726  
 2003 ....1,659  
 2002 ....1,659  
 2001 ....1,615  
 2000 ....1,666  
 1999 ....1,605



*Apollo High School*

1998 ....1,665  
1997 ....1,622  
1996 ....1,742  
1995 ....1,823  
1994 ....1,929  
1993 ....1,920  
1992 ....1,878  
1991 ....1,907  
1990 ....2,003  
1989 ....2,028  
1988 ....2,049  
1987 ....2,171  
1986 ....2,221  
1985 ....2,179  
1984 ....2,191  
1983 ....2,188  
1982 ....2,317  
1981 ....2,371  
1980 ....2,512  
1979 ....2,547  
1978 ....2,511  
1977 ....2,501  
1976 ....2,419  
1975 ....2,335  
1974 ....2,247  
1973 ....2,113  
1972 ....1,740  
1971 .... 987

**ARCADIA (SCOTTSDALE)**

**"Titans"**  
2005 ....1,284  
2004 ....1,243  
2003 ....1,282  
2002 ....1,255  
2001 ....1,223  
2000 ....1,214  
1999 ....1,173  
1998 ....1,116  
1997 ....1,080  
1996 ....1,076  
1995 ....1,056  
1994 ....1,029  
1993 ....1,002  
1992 ....1,030  
1991 .... 943  
1990 .... 981  
1989 ....1,029  
1988 ....1,116  
1987 ....1,192  
1986 ....1,200  
1985 ....1,200  
1984 ....1,182  
1983 ....1,069  
1982 ....1,178  
1981 ....1,280  
1980 ....1,431  
1979 ....1,526  
1978 ....1,586  
1977 ....1,657  
1976 ....1,662

1975 ....1,728  
1974 ....1,782  
1973 ....1,848  
1972 ....1,802  
1971 ....1,837  
1970 ....1,845  
1969 ....1,900  
1968 ....2,010  
1967 ....2,032  
1966 ....2,034  
1965 ....2,030  
1964 ....1,993  
1963 ....1,749  
1962 ....1,569  
1961 ....1,289  
1960 .... 892

**ARIZONA LUTHERAN (PHOENIX)**

**"Coyotes"**  
2005 ....165  
2004 ....161  
2003 ....173  
2002 ....161  
2001 ....163  
2000 ....136  
1999 ....110  
1998 ....151  
1997 ....152  
1996 ....157  
1995 ....154  
1994 ....152  
1993 ....153  
1992 ....148  
1991 ....149  
1990 ....162  
1989 ....183  
1988 ....190  
1987 ....192  
1986 ....184

**ARIZONA DEAF & BLIND  
(TUCSON)**

**"Sentinels"**  
2005 ....90  
2004 ....90  
2003 ....93  
2002 ....91  
2001 ....100  
2000 ....69  
1999 ....75  
1998 ....103  
1997 ....133  
1996 ....112  
1995 ....106  
1994 ....101  
1993 ....93  
1992 ....97  
1991 ....85  
1990 ....81  
1989 ....75  
1988 ....(unk.)

1987 ....74  
1986 ....86  
1985 ....102  
1984 ....104  
1983 ....(unk.)  
1982 ....137  
1981 ....138  
1980 ....137  
1979 ....120  
1978 ....(unk.)  
1977 ....(unk.)  
1976 ....124  
1975 ....149  
1974 ....138  
1973 ....134  
1972 ....142  
1971 ....133  
1970 ....122  
1969 ....118  
1968 ....115  
1967 ....108

**ASH FORK  
"Spartans"**

2005 ....62  
2004 ....55  
2003 ....58  
2002 ....79  
2001 ....70  
2000 ....80  
1999 ....68  
1998 ....55  
1997 ....57  
1996 ....57  
1995 ....69  
1994 ....58  
1993 ....50  
1992 ....43  
1991 ....44  
1990 ....39  
1989 ....39  
1988 ....34  
1987 ....35  
1986 ....43  
1985 ....35  
1984 ....32  
1983 ....33  
1982 ....34  
1981 ....26  
1980 ....40  
1979 ....38  
1978 ....32  
1977 ....(unk.)  
1976 ....55  
1975 ....43  
1974 ....29  
1973 ....46  
1972 ....42  
1971 ....56  
1970 ....47  
1969 ....48

1968 ....63  
 1967 ....64  
 1966 ....(unk.)  
 1965 ....37  
 1964 ....37  
 1963 ....34  
 1962 ....37  
 1961 ....43  
 1960 ....57  
 1959 ....40  
 1958 ....40  
 1957 ....45  
 1956 ....(unk.)  
 1955 ....(unk.)  
 1954 ....42  
 1953 ....41  
 1952 ....(unk.)  
 1951 ....38  
 1950 ....42  
 1949 ....41  
 1948 ....(unk.)  
 1947 ....31  
 1946 ....28

**BABOQUIVARI (SELLS)**

**“Warriors”**  
 2005 ....313  
 2004 ....296  
 2003 ....298  
 2002 ....310  
 2001 ....310  
 2000 ....300  
 1999 ....289  
 1998 ....300  
 1997 ....297  
 1996 ....280  
 1995 ....258  
 1994 ....265  
 1993 ....264  
 1992 ....257  
 1991 ....277  
 1990 ....266  
 1989 ....256  
 1988 ....245  
 1987 ....234  
 1986 ....260  
 1985 ....235  
 1984 ....271  
 1983 ....250  
 1982 ....224  
 1981 ....210  
 1980 ....345  
 1979 ....205  
 1978 ....215  
 1977 ....228  
 1976 ....240  
 1975 ....362  
 1974 ....236  
 1973 ....212  
 1972 ....195

**BAGDAD “Sultans”**

2005 ....73  
 2004 ....85  
 2003 ....98  
 2002 ....105  
 2001 ....118  
 2000 ....118  
 1999 ....143  
 1998 ....155  
 1997 ....143  
 1996 ....133  
 1995 ....149  
 1994 ....177  
 1993 ....169  
 1992 ....150  
 1991 ....146  
 1990 ....151  
 1989 ....170  
 1988 ....176  
 1987 ....182  
 1986 ....177  
 1985 ....137  
 1984 ....228  
 1983 ....218  
 1982 ....205  
 1981 ....198  
 1980 ....180  
 1979 ....195  
 1978 ....189  
 1977 ....191  
 1976 ....211  
 1975 ....215  
 1974 ....191  
 1973 ....182  
 1972 ....168

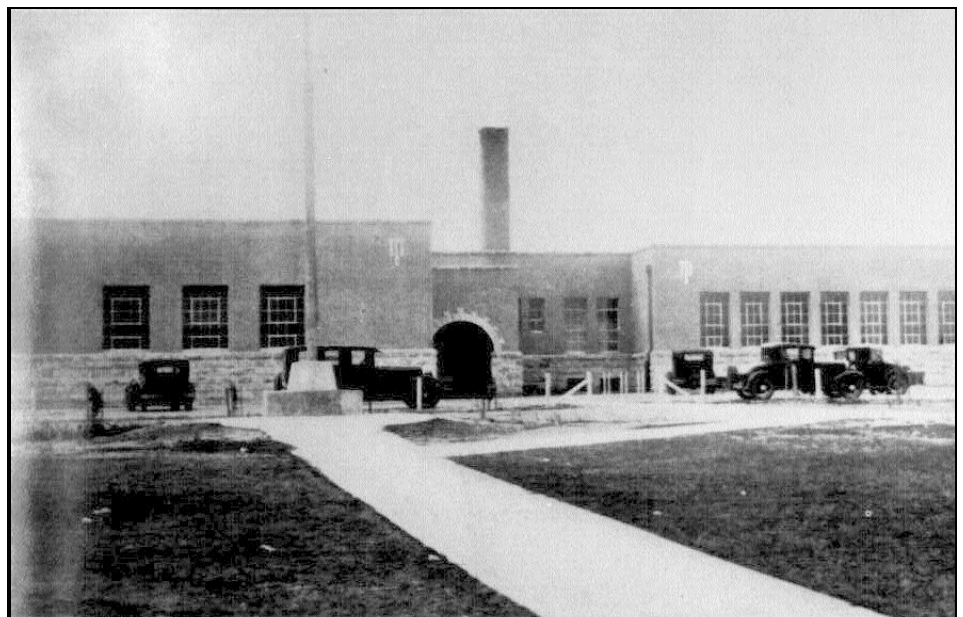
1971 ....165  
 1970 ....147  
 1969 ....146  
 1968 ....127  
 1967 ....126  
 1966 ....120  
 1965 ....131  
 1964 ....126  
 1963 ....122  
 1962 ....115  
 1961 ....108  
 1960 ....92  
 1959 ....87  
 1958 ....89  
 1957 ....92  
 1956 ....89  
 1955 ....86

**BASHA (CHANDLER)  
 “Bears”**

2005 ....2,500 (3)  
 2004 ....987 (2)  
 2003 ....489

**BENSON**

**“Bobcats”**  
 2005 ....384  
 2004 ....399  
 2003 ....398  
 2002 ....375  
 2001 ....396  
 2000 ....397  
 1999 ....442  
 1998 ....460  
 1997 ....496



*Original Benson High School*



1996 ....490  
1995 ....448  
1994 ....424  
1993 ....399  
1992 ....361  
1991 ....358  
1990 ....366  
1989 ....390  
1988 ....378  
1987 ....394  
1986 ....380  
1985 ....409  
1984 ....387  
1983 ....371  
1982 ....366  
1981 ....350  
1980 ....360  
1979 ....367  
1978 ....320  
1977 ....345  
1976 ....366  
1975 ....390  
1974 ....355  
1973 ....358  
1972 ....322  
1971 ....319  
1970 ....317  
1969 ....314  
1968 ....291  
1967 ....301  
1966 ....297  
1965 ....289  
1964 ....274  
1963 ....255  
1962 ....238  
1961 ....200  
1960 ....195  
1959 ....215  
1958 ....184  
1957 ....204  
1956 ....180  
1955 ....178  
1954 ....157  
1953 ....140  
1952 ....124  
1951 ....109  
1950 ....111  
1949 ....100  
1948 ....98  
1947 ....111  
1946 ....105  
1945 ....107  
1944 ....101  
1943 ....106  
1942 ....112  
1941 ....104  
1940 ....86  
1939 ....81  
1938 ....85  
1937 ....90  
1936 ....95

1935 ....92  
1934 ....89  
1933 ....90  
1932 ....88  
1931 ....88

**BISBEE**  
**“Pumas”**

2005 ....424  
2004 ....402  
2003 ....394  
2002 ....408  
2001 ....391  
2000 ....398  
1999 ....422  
1998 ....432  
1997 ....477  
1996 ....489  
1995 ....476  
1994 ....441  
1993 ....440  
1992 ....440  
1991 ....443  
1990 ....461  
1989 ....479  
1988 ....504  
1987 ....531  
1986 ....521  
1985 ....524  
1984 ....529  
1983 ....556  
1982 ....528  
1981 ....569  
1980 ....591  
1979 ....595  
1978 ....594  
1977 ....749  
1976 ....772  
1975 ....940

1974 ....907  
1973 ....917  
1972 ....915  
1971 ....923  
1970 ....924  
1969 ....886  
1968 ....881  
1967 ....871  
1966 ....795  
1965 ....840  
1964 ....857  
1963 ....816  
1962 ....796  
1961 ....766  
1960 ....771  
1959 ....743  
1958 ....710  
1957 ....643  
1956 ....615  
1955 ....577  
1954 ....533  
1953 ....506  
1952 ....470  
1951 ....452  
1950 ....413 (3)  
1949 ....441 (3)  
1948 ....481 (3)  
1947 ....497 (3)  
1946 ....445 (3)  
1945 ....449 (3)  
1944 ....439 (3)  
1943 ....530 (3)  
1942 ....587 (3)  
1941 ....571 (3)  
1940 ....530 (3)  
1939 ....481 (3)  
1938 ....445 (3)  
1937 ....397 (3)  
1936 ....438 (3)



*Original Bisbee High School*

1935 ....513 (3)  
 1934 ....514 (3)  
 1933 ....579 (3)  
 1932 ....500 (3)  
 1931 ....425 (3)  
 1930 ....430 (3)  
 1929 ....450 (3)  
 1928 ....389 (3)  
 1927 ....401 (3)  
 1926 ....359 (3)  
 1925 ....338 (3)  
 1924 ....322 (3)  
 1923 ....284 (3)  
 1922 ....314 (3)  
 1921 ....205 (3)  
 1920 ....(unk.)  
 1919 ....131  
 1918 ....181  
 1917 ....181

**BLUE RIDGE (LAKESIDE)**  
**"Yellowjackets"**

2005 ....872  
 2004 ....775  
 2003 ....783  
 2002 ....731  
 2001 ....708  
 2000 ....711  
 1999 ....681  
 1998 ....678  
 1997 ....681  
 1996 ....652  
 1995 ....651  
 1994 ....579  
 1993 ....565  
 1992 ....537  
 1991 ....490  
 1990 ....493  
 1989 ....530  
 1988 ....540  
 1987 ....552  
 1986 ....509  
 1985 ....495  
 1984 ....449  
 1983 ....443  
 1982 ....441  
 1981 ....475  
 1980 ....426  
 1979 ....437  
 1978 ....401  
 1977 ....383  
 1976 ....365  
 1975 ....316  
 1974 ....294  
 1973 ....246  
 1972 ....221  
 1971 ....228  
 1970 ....219  
 1969 ....205  
 1968 ....201  
 1967 ....199

1966 ....170  
 1965 ....145  
 1964 ....140  
 1963 ....82  
 1962 ....74  
 1961 ....61  
 1959 ....59  
 1958 ....52  
 1957 ....46  
 1956 ....41  
 1955 ....37  
 1954 ....33  
 1953 ....30  
 1952 ....28

**BOULDER CREEK (ANTHEM)**

**"Jaguars"**  
 2005 ....765 (2)

**BOURGADE (PHOENIX)**  
**"Golden Eagles"**

2005 ....386  
 2004 ....402  
 2003 ....405  
 2002 ....387  
 2001 ....349  
 2000 ....307  
 1999 ....278  
 1998 ....312  
 1997 ....300  
 1996 ....324  
 1995 ....314  
 1994 ....307  
 1993 ....271  
 1992 ....264  
 1991 ....252  
 1990 ....278  
 1989 ....288

1988 ....288  
 1987 ....391  
 1986 ....438  
 1985 ....459  
 1984 .... 500  
 1983 ....482  
 1982 ....525  
 1981 ....496  
 1980 ....508  
 1979 ....479  
 1978 ....479  
 1977 ....519  
 1976 ....474  
 1975 ....427  
 1974 ....475  
 1973 ....580  
 1972 ....600  
 1971 ....638  
 1970 ....637  
 1969 ....615  
 1968 ....585  
 1967 ....637  
 1966 ....586  
 1965 ....568  
 1964 ....406  
 1963 ....294

**BOWIE**  
**"Panthers"**

2005 ....33  
 2004 ....34  
 2003 ....34  
 2002 ....26  
 2001 ....26  
 2000 ....29  
 1999 ....28  
 1998 ....43  
 1997 ....33



**Bourgade Catholic High School Eagle**



1996 ....29  
 1995 ....34  
 1994 ....27  
 1993 ....33  
 1992 ....50  
 1991 ....46  
 1990 ....32  
 1989 ....31  
 1988 ....30  
 1987 ....28  
 1986 ....50  
 1985 ....51  
 1984 ....54  
 1983 ....57  
 1982 ....59  
 1981 ....61  
 1980 ....45  
 1979 ....56  
 1978 ....(unk.)  
 1977 ....(unk.)  
 1976 ....54  
 1975 ....53  
 1974 ....63  
 1973 ....62  
 1972 ....73  
 1971 ....81  
 1970 ....78  
 1969 ....85  
 1968 ....76  
 1967 ....60

**BRADSHAW MOUNTAIN  
 'Bears'**

2005 ....1,594  
 2004 ....1,407  
 2003 ....1,327  
 2002 ....1,401  
 2001 ....1,404  
 2000 ....1,398  
 1999 ....1,261  
 1998 ....1,139  
 1997 ....1,099  
 1996 ....1,015  
 1995 .... 939  
 1994 .... 822  
 1993 .... 763  
 1992 .... 682  
 1991 .... 616  
 1990 .... 566  
 1989 .... 503  
 1988 .... 488  
 1987 .... 477  
 1986 .... 435  
 1985 .... 397  
 1984 .... 409  
 1983 .... 352  
 1982 .... 329  
 1981 .... 293  
 1980 .... 265  
 1979 .... 256  
 1978 .... 253

1977 .... 249

**BROPHY PREP (PHOENIX)  
 "Broncos"**

2005 ....1,197  
 2004 ....1,208  
 2003 ....1,209  
 2002 ....1,207  
 2001 ....1,196  
 2000 ....1,194  
 1999 ....1,195  
 1998 ....1,161  
 1997 ....1,145  
 1996 ....1,156  
 1995 ....1,154  
 1994 ....1,161  
 1993 ....1,162  
 1992 ....1,140  
 1991 ....1,145  
 1990 ....1,104  
 1989 ....1,059  
 1988 ....1,065  
 1987 ....1,062  
 1986 ....1,048  
 1985 ....1,026  
 1984 ....1,016  
 1983 .... 987  
 1982 .... 911  
 1981 .... 870  
 1980 .... 814  
 1979 .... 767  
 1978 .... 728  
 1977 .... 671  
 1976 .... 701  
 1975 .... 671  
 1974 .... 703  
 1973 .... 654  
 1972 .... 609  
 1971 .... 615

1970 .... 573  
 1969 .... 545  
 1968 .... 578  
 1967 .... 593  
 1966 .... 580  
 1965 .... 530  
 1964 .... 574  
 1963 .... 548  
 1962 .... 528  
 1961 .... 500  
 1960 .... 421  
 1959 .... 373  
 1958 .... 319  
 1957 .... 279  
 1956 .... 230  
 1955 .... 185  
 1954 .... 129  
 1953 .... 99

**BUCKEYE UNION  
 "Hawks"**

2005 ....1,193  
 2004 ....1,089  
 2003 ....1,144  
 2002 ....1,142  
 2001 ....1,146  
 2000 ....1,070  
 1999 ....1,074  
 1998 ....1,066  
 1997 ....1,086  
 1996 ....1,029  
 1995 .... 947  
 1994 .... 890  
 1993 .... 830  
 1992 .... 773  
 1991 .... 768  
 1990 .... 808  
 1989 .... 775  
 1988 .... 845



*Brophy College Prep*



1987 .... 828  
 1986 .... 715  
 1985 .... 772  
 1984 .... 740  
 1983 .... 786  
 1982 .... 851  
 1981 .... 825  
 1980 .... 831  
 1979 .... 820  
 1978 .... 801  
 1977 .... 745  
 1976 .... 816  
 1975 .... 832  
 1974 .... 766  
 1973 .... 727  
 1972 .... 687  
 1971 .... 685  
 1970 .... 696  
 1969 .... 616  
 1968 .... 601  
 1967 .... 593  
 1966 .... 566  
 1965 .... 593  
 1964 .... 557  
 1963 .... 479  
 1962 .... 436  
 1961 .... 408  
 1960 .... 340  
 1959 .... 345  
 1958 .... 317  
 1957 .... 307  
 1956 .... 346  
 1955 .... 325  
 1954 .... 305  
 1953 .... 295  
 1952 .... 211  
 1951 .... 260  
 1950 .... 280  
 1949 .... 170  
 1948 .... 210  
 1947 .... 196  
 1946 .... 193  
 1945 .... 180  
 1944 .... 171  
 1943 .... 174  
 1942 .... 184  
 1941 .... 229  
 1940 .... 225  
 1939 .... 196  
 1938 .... 189  
 1937 .... 168  
 1936 .... 150  
 1935 .... 180  
 1934 .... 156  
 1933 .... 140  
 1932 .... 130  
 1931 .... 150  
 1930 .... 118  
 1929 .... 60  
 1928 .... 55  
 1927 .... 50

1926 .... 47  
 1925 .... 44

**BUENA (SIERRA VISTA)  
 "Colts"**

2005 ....2,611  
 2004 ....2,658  
 2003 ....2,591  
 2002 ....2,500  
 2001 ....2,655  
 2000 ....2,661  
 1999 ....2,580  
 1998 ....2,609  
 1997 ....2,449  
 1996 ....2,586  
 1995 ....2,564  
 1994 ....2,416  
 1993 ....2,356  
 1992 ....2,190  
 1991 ....2,269  
 1990 ....2,370  
 1989 ....2,381  
 1988 ....2,368  
 1987 ....2,343  
 1986 ....2,290  
 1985 ....2,115  
 1984 ....2,116  
 1983 ....2,076  
 1982 ....2,189  
 1981 ....2,405  
 1980 ....2,337  
 1979 ....2,391  
 1978 ....2,278  
 1977 ....2,138  
 1976 ....2,018  
 1975 ....1,813  
 1974 ....1,680  
 1973 ....1,521

1972 ....1,330  
 1971 ....1,161  
 1970 ....1,036  
 1969 ....1,015  
 1968 .... 861  
 1967 .... 853  
 1966 .... 879  
 1965 .... 747  
 1964 .... 724  
 1963 .... 708  
 1962 .... 503  
 1961 .... 551  
 1960 .... 365

**CACTUS (GLENDALE)  
 "Cobras"**

2005 ....1,832  
 2004 ....1,843  
 2003 ....1,808  
 2002 ....1,751  
 2001 ....1,736  
 2000 ....1,767  
 1999 ....1,793  
 1998 ....1,836  
 1997 ....1,815  
 1996 ....1,747  
 1995 ....1,666  
 1994 ....1,640  
 1993 ....1,723  
 1992 ....1,748  
 1991 ....1,744  
 1990 ....1,822  
 1989 ....1,865  
 1988 ....1,874  
 1987 ....1,860  
 1986 ....1,958  
 1985 ....1,751  
 1984 ....1,679



*Buckeye Union High School*

1983 ....1,671  
1982 ....1,644  
1981 ....1,632  
1980 ....1,527  
1979 ....1,120  
1978 ....1,100

**CACTUS SHADOWS**

**“Falcons”**

2005 ....1,464  
2004 ....1,388  
2003 ....1,389  
2002 ....1,266  
2001 ....1,108  
2000 ....1,115  
1999 .... 951  
1998 .... 846  
1997 .... 759  
1996 .... 665  
1995 .... 630  
1994 .... 542  
1993 .... 504  
1992 .... 443  
1991 .... 440  
1990 .... 407  
1989 .... 396  
1988 .... 372  
1987 .... 342  
1986 .... 351  
1985 .... 328

**CAMELBACK (PHOENIX)**

**“Spartans”**

2005 ....2,359  
2004 ....2,291  
2003 ....2,362  
2002 ....2,354  
2001 ....2,296  
2000 ....2,455  
1999 ....2,568  
1998 ....2,679  
1997 ....2,564  
1996 ....2,513  
1995 ....2,510  
1994 ....2,379  
1993 ....2,342  
1992 ....2,276  
1991 ....2,354  
1990 ....2,272  
1989 ....2,409  
1988 ....2,837  
1987 ....2,604  
1986 ....2,718  
1985 ....2,666  
1984 ....2,801  
1983 ....2,999  
1982 ....2,442  
1981 ....2,656  
1980 ....2,757  
1979 ....2,861  
1978 ....3,003

1977 ....2,842  
1976 ....2,823  
1975 ....2,716  
1974 ....2,793  
1973 ....2,888  
1972 ....2,821  
1971 ....2,852  
1970 ....2,824  
1969 ....2,859  
1968 ....2,946  
1967 ....2,908  
1966 ....2,954  
1965 ....3,008  
1964 ....3,106  
1963 ....2,917  
1962 ....2,724  
1961 ....2,550  
1960 ....2,336  
1959 ....2,207  
1958 ....1,931  
1957 ....1,702  
1956 ....1,403  
1955 .... 913  
1954 .... 514

**CAMP VERDE**

**“Cowboys”**

2005 ....429  
2004 ....457  
2003 ....470  
2002 ....450  
2001 ....480  
2000 ....499  
1999 ....514  
1998 ....501

1997 ....535  
1996 ....502  
1995 ....474  
1994 ....453  
1993 ....404  
1992 ....387  
1991 ....378  
1990 ....403  
1989 ....420  
1988 ....373  
1987 ....420  
1986 ....351  
1985 ....322  
1984 ....311  
1983 ....301  
1982 ....280  
1981 ....296  
1980 ....319  
1979 ....297  
1978 ....294  
1977 ....281  
1976 ....275  
1975 ....250  
1974 ....229  
1973 ....214  
1972 ....217  
1971 ....182  
1970 ....170  
1969 ....155  
1968 ....141  
1967 ....124  
1966 ....124  
1965 ....120  
1964 ....116  
1963 ....108



*Original Camp Verde High School*

1962 ....87  
 1961 ....74  
 1960 ....66  
 1959 ....71  
 1958 ....55  
 1957 ....49  
 1956 ....39  
 1955 ....40  
 1954 ....40  
 1953 ....42  
 1952 ....45  
 1951 ....54  
 1950 ....52  
 1949 ....50  
 1948 ....46  
 1945 ....34  
 1944 ....27  
 1943 ....  
 1942 ....

**CANYON DEL ORO (TUCSON)**  
**“Dorados”**

2005 ....1,754  
 2004 ....1,865  
 2003 ....2,165  
 2002 ....2,446  
 2001 ....2,278  
 2000 ....2,976  
 1999 ....2,872  
 1998 ....2,809  
 1997 ....2,642  
 1996 ....2,527  
 1995 ....2,518  
 1994 ....2,452  
 1993 ....2,368  
 1992 ....2,267  
 1991 ....2,073  
 1990 ....1,971  
 1989 ....2,027  
 1988 ....2,089  
 1987 ....1,924  
 1986 ....1,990  
 1985 ....1,851  
 1984 ....1,791  
 1983 ....1,681  
 1982 ....1,698  
 1981 ....1,669  
 1980 ....1,652  
 1979 ....1,575  
 1978 ....1,333  
 1977 ....1,256  
 1976 ....1,464  
 1975 ....1,389  
 1974 ....1,266  
 1973 ....1,101  
 1972 .... 991  
 1971 .... 979  
 1970 .... 896  
 1969 .... 814  
 1968 .... 560  
 1967 .... 478

1966 .... 283

**CANYON STATE ACADEMY**  
**(BOYS RANCH)**  
**“Spartans”**

2005 ....98  
 2004 ....94  
 2003 ....97  
 2002 ....73  
 2001 ....47  
 2000 ....42  
 1999 ....105  
 1998 ....458  
 1997 ....358  
 1996 ....345  
 1995 ....295

**CARL HAYDEN (PHOENIX)**  
**“Falcons”**

2005 ....2,266  
 2004 ....2,257  
 2003 ....2,316  
 2002 ....2,369  
 2001 ....2,236  
 2000 ....2,095  
 1999 ....2,161  
 1998 ....2,459  
 1997 ....2,475  
 1996 ....2,598  
 1995 ....2,271  
 1994 ....2,235  
 1993 ....2,192  
 1992 ....2,202  
 1991 ....2,234  
 1990 ....2,253  
 1989 ....2,505  
 1988 ....2,545  
 1987 ....2,223  
 1986 ....2,087

1985 ....1,561  
 1984 ....1,602  
 1983 ....1,921  
 1982 ....1,566  
 1981 ....1,594  
 1980 ....1,818  
 1979 ....2,115  
 1978 ....2,321  
 1977 ....2,415  
 1976 ....2,449  
 1975 ....2,653  
 1974 ....2,651  
 1973 ....2,747  
 1972 ....2,812  
 1971 ....2,587  
 1970 ....2,551  
 1969 ....2,313  
 1968 ....2,560  
 1967 ....2,518  
 1966 ....2,438  
 1965 ....2,605  
 1964 ....2,577  
 1963 ....2,834  
 1962 ....4,329  
 1961 ....3,421  
 1960 ....2,912  
 1959 ....2,405  
 1958 ....2,003

**CARVER (PHOENIX)**  
**“Monarchs”**

1954 ....406  
 1953 ....490  
 1952 ....388  
 1951 ....426  
 1950 ....404  
 1949 ....387  
 1948 ....366  
 1947 ....315



*Phoenix Carver High School*



1946 ....273  
 1945 ....244  
 1944 ....203  
 1943 ....209  
 1942 ....221  
 1941 ....197  
 1940 ....189  
 1939 ....190  
 1938 ....190

**CASA GRANDE  
 "Cougars"**

2005 ....2,942  
 2004 ....2,592  
 2003 ....2,603  
 2002 ....2,661  
 2001 ....2,287  
 2000 ....2,333  
 1999 ....2,287  
 1998 ....2,296  
 1997 ....2,223  
 1996 ....2,173  
 1995 ....1,980  
 1994 ....1,930  
 1993 ....1,891  
 1992 ....1,837  
 1991 ....1,838  
 1990 ....1,880  
 1989 ....1,903  
 1988 ....1,878  
 1987 ....1,856  
 1986 ....1,790  
 1985 ....1,720  
 1984 ....1,703  
 1983 ....1,675  
 1982 ....1,593  
 1981 ....1,583  
 1980 ....1,673  
 1979 ....1,713  
 1978 ....1,704  
 1977 ....1,750  
 1976 ....1,730  
 1975 ....1,590  
 1974 ....1,518  
 1973 ....1,440  
 1972 ....1,375  
 1971 ....1,276  
 1970 ....1,301  
 1969 ....1,310  
 1968 ....1,344  
 1967 ....1,308  
 1966 ....1,276  
 1965 ....1,252  
 1964 ....1,089  
 1963 ....940  
 1962 ....870  
 1961 ....780  
 1960 ....736  
 1959 ....801  
 1958 ....702  
 1957 ....621

1956 ....570  
 1955 ....559  
 1954 ....497  
 1953 ....430  
 1952 ....392  
 1951 ....362  
 1950 ....323  
 1949 ....318  
 1948 ....344  
 1947 ....312  
 1946 ....232  
 1945 ....200  
 1944 ....180  
 1943 ....205  
 1942 ....219  
 1941 ....211  
 1940 ....181  
 1939 ....200  
 1938 ....186  
 1937 ....158  
 1936 ....150  
 1935 ....175  
 1934 ....140  
 1933 ....150  
 1932 ....151  
 1931 ....110  
 1930 ....95  
 1929 ....83  
 1928 ....82  
 1927 ....76  
 1926 ....72

**CATALINA (TUCSON)  
 "Trojans"**

2005 ....1,645  
 2004 ....1,611  
 2003 ....1,509  
 2002 ....1,441

2001 ....1,385  
 2000 ....1,373  
 1999 ....1,394  
 1998 ....1,306  
 1997 ....1,279  
 1996 ....1,166  
 1995 ....1,269  
 1994 ....1,241  
 1993 ....1,191  
 1992 ....1,217  
 1991 ....1,327  
 1990 ....1,317  
 1989 ....1,367  
 1988 ....1,446  
 1987 ....1,684  
 1986 ....1,738  
 1985 ....1,729  
 1984 ....1,817  
 1983 ....1,869  
 1982 ....1,850  
 1981 ....1,840  
 1980 ....1,920  
 1979 ....2,017  
 1978 ....2,007  
 1977 ....2,136  
 1976 ....2,211  
 1975 ....2,504  
 1974 ....2,528  
 1973 ....2,574  
 1972 ....2,626  
 1971 ....2,905  
 1970 ....2,665  
 1969 ....2,576  
 1968 ....2,510  
 1967 ....2,454  
 1966 ....2,437  
 1965 ....2,398  
 1964 ....2,358



*Old Casa Grande High School*

1963 ....2,297  
1962 ....2,254  
1961 ....2,597  
1960 ....2,339  
1959 ....2,197  
1958 ....2,173  
1957 ....2,172  
1956 ....1,826

**CATALINA FOOTHILLS (TUCSON)**

**“Falcons”**

2005 ....1,867  
2004 ....1,874  
2003 ....1,817  
2002 ....1,785  
2001 ....1,739  
2000 ....1,678  
1999 ....1,615  
1998 ....1,498  
1997 ....1,394  
1996 ....1,254  
1995 ....1,254  
1994 .... 865  
1993 .... 521  
1992 .... 248

**CENTENNIAL (PEORIA)**

**“Coyotes”**

2005 ....2,180  
2004 ....2,050  
2003 ....1,870  
2002 ....1,834  
2001 ....1,815  
2000 ....1,781  
1999 ....1,859  
1998 ....1,809  
1997 ....1,839  
1996 ....1,873  
1995 ....1,749  
1994 ....1,558  
1993 ....1,051  
1992 .... 681  
1991 .... 340

**CENTRAL (PHOENIX)**

**“Bobcats”**

2005 ....2,334  
2004 ....2,211  
2003 ....2,245  
2002 ....2,307  
2001 ....2,374  
2000 ....2,405  
1999 ....2,610  
1998 ....2,608  
1997 ....2,706  
1996 ....2,665  
1995 ....2,559  
1994 ....2,403  
1993 ....2,347  
1992 ....2,292  
1991 ....2,186

1990 ....2,119  
1989 ....2,187  
1988 ....2,759  
1987 ....2,406  
1986 ....2,501  
1985 ....2,515  
1984 ....2,794  
1983 ....3,220  
1982 ....2,037  
1981 ....2,063  
1980 ....2,226  
1979 ....2,206  
1978 ....2,287  
1977 ....2,308  
1976 ....2,287  
1975 ....2,532  
1974 ....2,537  
1973 ....2,552  
1972 ....2,606  
1971 ....2,620  
1970 ....2,616  
1969 ....2,533  
1968 ....2,704  
1967 ....2,726  
1966 ....2,658  
1965 ....2,705  
1964 ....2,732  
1963 ....2,571  
1962 ....2,669  
1961 ....2,311  
1960 ....2,266  
1959 ....2,144  
1958 ....1,648

**CESAR CHAVEZ (PHOENIX)**

**“Champions”**

2005 ....2,632  
2004 ....2,609  
2003 ....2,295

2002 ....2,104  
2001 ....1,570  
2000 ....1,062

**CHANDLER**

**“Wolves”**

2005 ....2,945  
2004 ....2,837  
2003 ....2,543  
2002 ....2,522  
2001 ....2,611  
2000 ....2,514  
1999 ....2,773  
1998 ....3,949  
1997 ....3,789  
1996 ....3,475  
1995 ....3,153  
1994 ....2,826  
1993 ....2,657  
1992 ....2,442  
1991 ....2,425  
1990 ....2,364  
1989 ....2,435  
1988 ....2,428  
1987 ....2,420  
1986 ....2,320  
1985 ....2,196  
1984 ....2,004  
1983 ....1,931  
1982 ....2,031  
1981 ....2,032  
1980 ....2,139  
1979 ....2,199  
1978 ....2,183  
1977 ....2,170  
1976 ....2,150  
1975 ....1,929  
1974 ....1,778  
1973 ....1,710



**Cesar Chavez High School Stadium.**

1972 ....1,616  
 1971 ....1,491  
 1970 ....1,372  
 1969 ....1,295  
 1968 ....1,280  
 1967 ....1,251  
 1966 ....1,227  
 1965 ....1,108  
 1964 ....1,060  
 1963 ....1,036  
 1962 ....918  
 1961 ....869  
 1960 ....815  
 1959 ....761  
 1958 ....703  
 1957 ....680  
 1956 ....635  
 1955 ....595  
 1954 ....567  
 1953 ....538  
 1952 ....486  
 1951 ....442  
 1950 ....391  
 1949 ....348  
 1948 ....322  
 1947 ....307  
 1946 ....245  
 1945 ....209  
 1944 ....200  
 1943 ....205  
 1942 ....207  
 1941 ....216  
 1940 ....218  
 1939 ....210  
 1938 ....188  
 1937 ....166  
 1936 ....(unk.)  
 1935 ....(unk.)  
 1934 ....(unk.)  
 1933 ....(unk.)  
 1932 ....(unk.)  
 1931 ....(unk.)  
 1930 ....231  
 1929 ....223  
 1928 ....213  
 1927 ....191  
 1926 ....185  
 1925 ....(unk.)  
 1924 ....(unk.)  
 1923 ....(unk.)  
 1922 ....125  
 1921 ....113  
 1920 ....69  
 1919 ....61  
 1918 ....53  
 1917 ....45  
 1916 ....30  
 1915 ....(unk.)

**CHAPARRAL (SCOTTSDALE)**

**"Firebirds"**  
 2005 ....1,790  
 2004 ....1,802  
 2003 ....1,865  
 2002 ....1,850  
 2001 ....1,888  
 2000 ....1,849  
 1999 ....1,813  
 1998 ....1,832  
 1997 ....1,724  
 1996 ....1,720  
 1995 ....1,775  
 1994 ....1,739  
 1993 ....1,671  
 1992 ....1,656  
 1991 ....1,671  
 1990 ....1,682  
 1989 ....1,783  
 1988 ....1,722  
 1987 ....2,080  
 1986 ....2,142  
 1985 ....2,082  
 1984 ....2,048  
 1983 ....2,003  
 1982 ....2,036  
 1981 ....2,081  
 1980 ....2,026  
 1979 ....1,901  
 1978 ....1,898  
 1977 ....1,683  
 1976 ....1,615  
 1975 ....1,405  
 1974 ....1,243  
 1973 .... 747

**CHINLE**

**"Wildcats"**  
 2005 ....1,091

2004 ....1,125  
 2003 ....1,196  
 2002 ....1,208  
 2001 ....1,244  
 2000 ....1,397  
 1999 ....1,184  
 1998 ....1,172  
 1997 ....1,090  
 1996 ....1,263  
 1995 ....1,247  
 1994 ....1,246  
 1993 ....1,290  
 1992 ....1,210  
 1991 ....1,176  
 1990 ....1,080  
 1989 ....1,057  
 1988 ....1,076  
 1987 ....1,019  
 1986 ....896  
 1985 ....892  
 1984 ....847  
 1983 ....904  
 1982 ....970  
 1981 ....1,026  
 1980 ....929  
 1979 ....887  
 1978 ....(unk.)  
 1977 ....(unk.)  
 1976 ....917  
 1975 ....756  
 1974 ....710  
 1973 ....639  
 1972 ....547  
 1971 ....546  
 1970 ....487  
 1969 ....426  
 1968 ....350  
 1967 ....335



**Chandler High School**



**CHINO VALLEY****“Cougars”**

2005 ....795  
 2004 ....774  
 2003 ....770  
 2002 ....716  
 2001 ....712  
 2000 ....760  
 1999 ....772  
 1998 ....721  
 1997 ....681  
 1996 ....628  
 1995 ....576  
 1994 ....542  
 1993 ....479  
 1992 ....444  
 1991 ....288

**CHOLLA (TUCSON)****“Chargers”**

2005 ....1,631  
 2004 ....1,668  
 2003 ....1,717  
 2002 ....1,654  
 2001 ....1,572  
 2000 ....1,631  
 1999 ....1,644  
 1998 ....1,565  
 1997 ....1,560  
 1996 ....1,575  
 1995 ....1,531  
 1994 ....1,536  
 1993 ....1,545  
 1992 ....1,561  
 1991 ....1,581  
 1990 ....1,587  
 1989 ....1,641  
 1988 ....1,400  
 1987 ....1,595  
 1986 ....1,485  
 1985 ....1,508  
 1984 ....1,637  
 1983 ....1,720  
 1982 ....1,805  
 1981 ....2,151  
 1980 ....2,140  
 1979 ....2,125  
 1978 ....1,550  
 1977 ....1,625  
 1976 ....2,008  
 1975 ....1,778  
 1974 ....1,765  
 1973 ....1,440  
 1972 ....1,299  
 1971 ....1,200  
 1970 .... 881

**CIBECUE****“Wildcats”**

2005 ....126  
 2004 ....101

2003 ....87  
 2002 ....133  
 2001 ....111  
 2000 ....89  
 1999 ....23 (2)

**CIBOLA (YUMA)****“Raiders”**

2005 ....2,686  
 2004 ....2,817  
 2003 ....2,705  
 2002 ....2,501  
 2001 ....2,418  
 2000 ....2,402  
 1999 ....2,338  
 1998 ....2,391  
 1997 ....2,301  
 1996 ....2,325  
 1995 ....2,307  
 1994 ....2,241  
 1993 ....2,266  
 1992 ....2,200  
 1991 ....1,959  
 1990 ....1,460  
 1989 .... 938

**CIENEGA (VAIL)****“Bobcats”**

2005 ....1,832  
 2004 ....1,333  
 2003 ....1,079  
 2002 ....457

**CLARKDALE****“Wolves”**

1951 ....75  
 1950 ....104  
 1949 ....74

1948 ....109  
 1947 ....86  
 1946 ....165  
 1945 ....175  
 1944 ....198  
 1943 ....199  
 1942 ....241  
 1941 ....195  
 1940 ....202  
 1939 ....197  
 1938 ....202  
 1937 ....197  
 1936 ....181  
 1935 ....145  
 1934 ....213  
 1933 ....209  
 1932 ....261  
 1931 ....185  
 1930 ....157  
 1929 ....118  
 1928 ....119  
 1927 ....107  
 1926 ....84  
 1925 ....92  
 1924 ....100  
 1923 ....90  
 1922 ....72  
 1921 ....63  
 1920 ....47

**CLIFTON “Trojans”**

2005 ....63  
 2004 ....60  
 2003 ....69  
 2002 ....75  
 2001 ....85  
 2000 ....86  
 1999 ....105

*Clarkdale High School*

1998 ....108  
 1997 ....124  
 1996 ....127  
 1995 ....118  
 1994 ....133  
 1993 ....138  
 1992 ....133  
 1991 ....126  
 1990 ....145  
 1989 ....140  
 1988 ....148  
 1987 ....148  
 1986 ....164  
 1985 ....171  
 1984 ....143  
 1983 ....136  
 1982 ....175  
 1981 ....175  
 1980 ....177  
 1979 ....188  
 1978 ....201  
 1977 ....207  
 1976 ....214  
 1975 ....234  
 1974 ....227  
 1973 ....244  
 1972 ....244  
 1971 ....235  
 1970 ....242  
 1969 ....249  
 1968 ....266  
 1967 ....266  
 1966 ....255  
 1965 ....247  
 1964 ....244  
 1963 ....231  
 1962 ....227  
 1961 ....216  
 1960 ....237  
 1959 ....247  
 1958 ....278  
 1957 ....268  
 1956 ....241  
 1955 ....219  
 1954 ....206  
 1953 ....202  
 1952 ....210  
 1951 ....191  
 1950 ....207  
 1949 ....193  
 1948 ....178  
 1947 ....177  
 1946 ....158  
 1945 ....159  
 1944 ....192  
 1943 ....188  
 1942 ....152  
 1941 ....129  
 1940 ....141  
 1939 ....131  
 1938 ....150

1937 ....121  
 1936 ....105  
 1935 ....111  
 1934 ....116  
 1933 ....135  
 1932 ....148  
 1931 ....125  
 1930 ....110

**COCONINO (FLAGSTAFF)  
 "Panthers"**

2005 ....1,405  
 2004 ....1,439  
 2003 ....1,418  
 2002 ....1,373  
 2001 ....1,390  
 2000 ....1,343  
 1999 ....1,309  
 1998 ....1,330  
 1997 ....1,355  
 1996 ....1,289  
 1995 ....1,258  
 1994 ....1,275  
 1993 ....1,266  
 1992 ....1,294  
 1991 ....1,425  
 1990 ....1,526  
 1989 ....1,754  
 1988 ....1,644  
 1987 ....1,667  
 1986 ....1,558  
 1985 ....1,492  
 1984 ....1,454  
 1983 ....1,439  
 1982 ....1,415  
 1981 ....1,473  
 1980 ....1,507  
 1979 ....1,498

1978 ....1,441  
 1977 ....1,416  
 1976 ....1,392  
 1975 ....1,353  
 1974 ....1,317  
 1973 ....1,267  
 1972 ....1,200  
 1971 ....1,100  
 1970 ....1,031  
 1969 .... 728  
 1968 .... 627

**COOLIDGE  
 "Bears"**

2005 ....858  
 2004 ....779  
 2003 ....799  
 2002 ....820  
 2001 ....754  
 2000 ....829  
 1999 ....834  
 1998 ....802  
 1997 ....797  
 1996 ....656  
 1995 ....645  
 1994 ....655  
 1993 ....689  
 1992 ....639  
 1991 ....620  
 1990 ....563  
 1989 ....583  
 1988 ....543  
 1987 ....637  
 1986 ....617  
 1985 ....594  
 1984 ....595  
 1983 ....654  
 1982 ....623



*Original Coolidge High School*



1981 ....659  
 1980 ....725  
 1979 ....738  
 1978 ....607  
 1977 ....669  
 1976 ....774  
 1975 ....741  
 1974 ....761  
 1973 ....766  
 1972 ....734  
 1971 ....711  
 1970 ....647  
 1969 ....730  
 1968 ....657  
 1967 ....634  
 1966 ....636  
 1965 ....627  
 1964 ....595  
 1963 ....507  
 1962 ....454  
 1961 ....442  
 1960 ....457  
 1959 ....450  
 1958 ....485  
 1957 ....498  
 1956 ....469  
 1955 ....452  
 1954 ....433  
 1953 ....423  
 1952 ....389  
 1951 ....375  
 1950 ....311  
 1949 ....276  
 1948 ....253  
 1947 ....248  
 1946 ....204  
 1945 ....192  
 1944 ....178  
 1943 ....225  
 1942 ....230  
 1941 ....216  
 1940 ....209  
 1939 ....194  
 1938 ....170  
 1937 ....154  
 1936 ....122

**COPPER CANYON (GLENDALE)**  
**“Aztecs”**  
 2005 ....422 (1)

**CORONA DEL SOL (TEMPE)**  
**“Aztecs”**  
 2005 ....2,800  
 2004 ....2,743  
 2003 ....2,771  
 2002 ....2,727  
 2001 ....2,695  
 2000 ....2,735  
 1999 ....2,717  
 1998 ....2,714

1997 ....2,593  
 1996 ....2,460  
 1995 ....2,203  
 1994 ....1,957  
 1993 ....2,154  
 1992 ....2,251  
 1991 ....2,710  
 1990 ....2,376  
 1989 ....2,263  
 1988 ....2,214  
 1987 ....2,217  
 1986 ....2,107  
 1985 ....1,999  
 1984 ....1,825  
 1983 ....1,936  
 1982 ....1,571  
 1981 ....1,438  
 1980 ....1,320  
 1979 ....889  
 1978 ....548

**CORONADO (SCOTTSDALE)**  
**“Dons”**  
 2005 ....1,262  
 2004 ....1,266  
 2003 ....1,236  
 2002 ....1,194  
 2001 ....1,279  
 2000 ....1,235  
 1999 ....1,246  
 1998 ....1,248  
 1997 ....1,228  
 1996 ....1,188  
 1995 ....1,210  
 1994 ....1,211  
 1993 ....1,314  
 1992 ....1,532  
 1991 ....1,616

1990 ....1,692  
 1989 ....1,833  
 1988 ....1,825  
 1987 ....2,178  
 1986 ....2,193  
 1985 ....2,127  
 1984 ....2,219  
 1983 ....2,124  
 1982 ....2,282  
 1981 ....2,429  
 1980 ....2,501  
 1979 ....2,666  
 1978 ....2,898  
 1977 ....2,979  
 1976 ....3,019  
 1975 ....3,043  
 1974 ....3,112  
 1973 ....3,071  
 1972 ....3,024  
 1971 ....2,931  
 1970 ....2,796  
 1969 ....2,697  
 1968 ....2,451  
 1967 ....2,353  
 1966 ....2,269  
 1965 ....2,162  
 1964 ....2,046  
 1963 ....1,749  
 1962 ....1,331

**CORTEZ (PHOENIX)**  
**“Colts”**  
 2005 ....1,304  
 2004 ....1,184  
 2003 ....1,158  
 2002 ....1,120  
 2001 ....1,141  
 2000 ....1,112



**Cottonwood High School**



1999 ....1,069  
 1998 ....1,063  
 1997 ....1,115  
 1996 ....1,059  
 1995 ....1,070  
 1994 ....1,001  
 1993 ....1,007  
 1992 ....1,050  
 1991 ....1,077  
 1990 ....1,134  
 1989 ....1,267  
 1988 ....1,370  
 1987 ....1,477  
 1986 ....1,501  
 1985 ....1,508  
 1984 ....1,546  
 1983 ....1,637  
 1982 ....1,758  
 1981 ....1,835  
 1980 ....2,000  
 1979 ....1,995  
 1978 ....2,015  
 1977 ....2,051  
 1976 ....1,963  
 1975 ....1,921  
 1974 ....1,910  
 1973 ....1,919  
 1972 ....2,118  
 1971 ....2,150  
 1970 ....2,233  
 1969 ....2,097  
 1968 ....1,861  
 1967 ....1,840  
 1966 ....1,813  
 1965 ....2,066  
 1964 ....1,851  
 1963 ....1,496  
 1962 ....1,082  
 1961 .... 590

1999 ....2,005  
 1998 ....1,946  
 1997 ....2,146  
 1996 ....2,346  
 1995 ....2,707  
 1994 ....2,551  
 1993 ....2,358  
 1992 ....2,316  
 1991 ....2,130  
 1990 ....2,012  
 1989 ....2,021  
 1988 ....2,201  
 1987 ....2,798  
 1986 ....3,611  
 1985 ....3,303  
 1984 ....2,849  
 1983 ....2,546  
 1982 ....1,854  
 1981 ....1,201

**DESERT CHRISTIAN (TUCSON)**  
**“Eagles”**

2005 ....228  
 2004 ....217  
 2003 ....214  
 2002 ....208  
 2001 ....218  
 2000 ....219  
 1999 ....214  
 1998 ....202  
 1997 ....191  
 1996 ....177  
 1995 ....164  
 1994 ....145  
 1993 ....103  
 1992 .... 92  
 1991 .... 93

**DESERT EDGE (GOODYEAR)**

**“Scorpions”**  
 2005 ....1,150  
 2004 ....350 (2)  
 2003 ....140 (1)

**DESERT MTN. (SCOTTSDALE)**  
**“Wolves”**

2005 ....2,399  
 2004 ....2,436  
 2003 ....2,381  
 2002 ....2,461  
 2001 ....2,391  
 2000 ....2,360  
 1999 ....2,165  
 1998 ....1,903  
 1997 ....1,943  
 1996 ....1,031

**DESERT RIDGE (GILBERT)**

**“Jaguars”**  
 2005 ....1,151  
 2004 ....1,465  
 2003 ....878

**DESERT VIEW (TUCSON)**

**“Jaguars”**  
 2005 ....1,573  
 2004 ....1,549  
 2003 ....1,640  
 2002 ....1,519  
 2001 ....1,636  
 2000 ....1,500  
 1999 ....1,614  
 1998 ....1,548  
 1997 ....1,571  
 1996 ....1,634  
 1995 ....1,520  
 1994 ....1,500

**COTTONWOOD “Red Devils”**

1958 ....157  
 1957 ....153  
 1956 ....137  
 1955 ....141  
 1954 ....135  
 1953 ....151  
 1952 ....159  
 1951 ....126  
 1950 ....140  
 1949 ....142  
 1948 ....143

**DEER VALLEY (PHOENIX)**  
**“Skyhawks”**

2005 ....2,261  
 2004 ....2,236  
 2003 ....2,244  
 2002 ....2,142  
 2001 ....2,033  
 2000 ....2,031



*Original Douglas High School*

1993 ....1,623  
 1992 ....1,575  
 1991 ....1,572  
 1990 ....1,567  
 1989 ....1,568  
 1988 ....1,360  
 1987 ....1,606  
 1986 ....1,268

**DESERT VISTA (PHOENIX)**

**“Thunder”**

2005 ....2,861  
 2004 ....2,840  
 2003 ....2,757  
 2002 ....2,615  
 2001 ....2,505  
 2000 ....2,330  
 1999 ....2,140  
 1998 ....1,563  
 1997 ....1,019  
 1996 .... 388

**DOBSON (MESA)**

**“Mustangs”**

\*2005 ..3,126  
 \*2004 ..3,252  
 \*2003 ..3,267  
 \*2002 ..3,404  
 \*2001 ..3,483  
 \*2000 ..3,680  
 \*1999 ..3,898  
 \*1998 ..3,972  
 \*1997 ..4,038  
 \*1996 ..4,042  
 \*1995 ..3,970  
 \*1994 ..3,910  
 \*1993 ..3,906  
 \*1992 ..3,805  
 \*1991 ..3,867  
 \*1990 ..3,894  
 \*1989 ..3,976  
 \*1988 ..4,002  
 \*1987 ..4,092  
 \*1986 ..2,598  
 \*1985 ..3,294  
 \*1984 ..2,894  
 1983 ....2,551  
 1982 ....1,239

**DOUGLAS**

**“Bulldogs”**

2005 ....1,271  
 2004 ....1,219  
 2003 ....1,228  
 2002 ....1,233  
 2001 ....1,244  
 2000 ....1,243  
 1999 ....1,351  
 1998 ....1,362  
 1997 ....1,319  
 1996 ....1,448

1995 ....1,402  
 1994 ....1,305  
 1993 ....1,342  
 1992 ....1,212  
 1991 ....1,275  
 1990 ....1,265  
 1989 ....1,214  
 1988 ....  
 1987 ....1,195  
 1986 ....1,115  
 1985 ....1,094  
 1984 ....1,164  
 1983 ....1,184  
 1982 ....1,189  
 1981 ....1,206  
 1980 ....1,288  
 1979 ....1,316  
 1978 ....  
 1977 ....  
 1976 ....1,492  
 1975 ....1,462  
 1974 ....1,479  
 1973 ....1,428  
 1972 ....1,374  
 1971 ....1,326  
 1970 ....1,234  
 1969 ....1,158  
 1968 ....1,118  
 1967 ....1,111  
 1966 ....  
 1965 ....  
 1964 ....  
 1963 ....990  
 1962 ....866  
 1961 ....835  
 1960 ....724  
 1959 ....545 (3)

1958 ....538 (3)  
 1957 ....514 (3)  
 1956 ....445 (3)  
 1955 ....464 (3)  
 1954 ....453 (3)  
 1953 ....390 (3)  
 1952 ....372 (3)  
 1951 ....372 (3)  
 1950 ....378 (3)  
 1949 ....565  
 1948 ....551  
 1947 ....549  
 1946 ....478  
 1945 ....488  
 1944 ....436  
 1943 ....429  
 1942 ....480  
 1941 ....475  
 1940 ....510  
 1939 ....483  
 1938 ....450  
 1937 ....466  
 1936 ....471  
 1935 ....475  
 1934 ....463  
 1933 ....488  
 1932 ....453  
 1931 ....435  
 1930 ....408  
 1929 ....427  
 1928 ....373  
 1927 ....343  
 1926 ....334  
 1925 ....368  
 1924 ....373  
 1923 ....367  
 1922 ....300



***Duncan High School***

1921 ....  
1920 ....  
1919 ....  
1918 ....200  
1917 ....177  
1916 ....156  
1915 ....125  
1914 ....100  
1913 ....88  
1912 ....73  
1911 ....58  
1910 ....43  
1909 ....28  
1908 ....

**DUNCAN "Wildkats"**

2005 ....152  
2004 ....167  
2003 ....183  
2002 ....196  
2001 ....197  
2000 ....184  
1999 ....194  
1998 ....198  
1997 ....223  
1996 ....218  
1995 ....207  
1994 ....236  
1993 ....216  
1992 ....225  
1991 ....206  
1990 ....209  
1989 ....219  
1988 ....189  
1987 ....223  
1986 ....218  
1985 ....223  
1984 ....214  
1983 ....209  
1982 ....200  
1981 ....210  
1980 ....216  
1979 ....213  
1978 ....208  
1977 ....208  
1976 ....213  
1975 ....238  
1974 ....222  
1973 ....245  
1972 ....282  
1971 ....241  
1970 ....234  
1969 ....233  
1968 ....205  
1967 ....205  
1966 ....192  
1965 ....192  
1964 ....199  
1963 ....201  
1962 ....195  
1961 ....197

1960 ....187  
1959 ....138  
1958 ....130  
1957 ....135  
1956 ....130  
1955 ....130  
1954 ....126  
1953 ....135  
1952 ....119  
1951 ....127  
1950 ....143  
1949 ....136  
1948 ....129  
1947 ....130  
1946 ....123  
1945 ....132  
1944 ....145  
1943 ....131  
1942 ....141  
1941 ....135  
1940 ....131  
1939 ....140  
1938 ....136  
1937 ....141  
1936 ....162  
1935 ....160  
1934 ....140  
1933 ....125  
1932 ....101  
1931 ....92  
1930 ....84  
1929 ....98  
1928 ....100

**DYSART (EL MIRAGE)**

**"Demons"**  
2005 ....1,366

2004 ....1,261  
2003 ....1,550  
2002 ....1,278  
2001 ....1,051  
2000 ....1,008  
1999 ....889  
1998 ....834  
1997 ....860  
1996 ....812  
1995 ....818  
1994 ....773  
1993 ....689  
1992 ....684  
1991 ....720  
1990 ....702  
1989 ....727  
1988 ....720  
1987 ....719  
1986 ....641  
1985 ....616  
1984 ....605  
1983 ....618  
1982 ....695  
1981 ....834  
1980 ....803  
1979 ....837  
1978 ....834  
1977 ....876  
1976 ....919  
1975 ....843  
1974 ....811  
1973 ....739  
1972 ....746  
1971 ....655  
1970 ....632  
1969 ....604  
1968 ....537



**Original Flagstaff High School**



1967 ....488  
1966 ....361  
1965 ....381  
1964 ....293 (2)

**EAST (PHOENIX)  
"Longhorns"**

1982 ....1,251  
1981 ....1,395  
1980 ....1,567  
1979 ....1,918  
1978 ....2,109  
1977 ....2,410  
1976 ....2,389  
1975 ....2,561  
1974 ....2,549  
1973 ....2,514  
1972 ....2,435  
1971 ....2,424  
1970 ....2,074  
1969 ....1,872  
1968 ....2,031  
1967 ....1,770  
1966 ....1,565  
1965 .... 708

**EAST FORK (WHITERIVER)  
"Eagles"**

2005 ....57  
2004 ....60  
2003 ....61  
2002 ....82  
2001 ....80  
2000 ....74  
1999 ....77  
1998 ....86  
1997 ....86  
1996 ....91  
1995 ....88  
1994 ....94  
1993 ....92  
1992 ....98  
1991 ....82  
1990 ....89  
1989 ....109  
1988 ....100  
1987 ....99  
1986 ....72  
1985 ....73  
1984 ....57  
1983 ....51  
1982 ....48  
1981 ....43  
1980 ....46  
1979 ....72  
1978 ....82  
1977 ....75  
1976 ....81  
1975 ....71  
1974 ....80  
1973 ....65

1972 ....50  
1971 ....44  
1970 ....38  
1969 ....47  
1968 ....45  
1967 ....46  
1966 ....49  
1965 ....51  
1964 ....41  
1963 ....43  
1962 ....43  
1961 ....35  
1960 ....36  
1959 ....32  
1958 ....30  
1957 ....27  
1956 ....21  
1955 ....20  
1954 ....14  
1953 ....10  
1952 ....4  
1951 ....1

**ESTRELLA FOOTHILLS  
(GOODYEAR)  
"Wolves"**

2005 ....776  
2004 ....510  
2003 ....297  
2002 ....138

**FLAGSTAFF  
"Eagles"**

2005 ....1,488  
2004 ....1,411  
2003 ....1,419  
2002 ....1,430  
2001 ....1,392

2000 ....1,331  
1999 ....1,325  
1998 ....1,320  
1997 ....1,366  
1996 ....1,423  
1995 ....1,364  
1994 ....1,326  
1993 ....1,256  
1992 ....1,191  
1991 ....1,279  
1990 ....1,321  
1989 ....1,515  
1988 ....1,531  
1987 ....1,551  
1986 ....1,497  
1985 ....1,436  
1984 ....1,323  
1983 ....1,335  
1982 ....1,228  
1981 .... 957  
1980 ....1,246  
1979 ....1,263  
1978 ....1,268  
1977 ....1,274  
1976 ....1,289  
1975 ....1,261  
1974 ....1,287  
1973 ....1,283  
1972 ....1,277  
1971 ....1,296  
1970 ....1,301  
1969 ....1,477  
1968 ....2,218  
1967 ....2,031  
1966 ....831 (3)  
1965 ....782 (3)  
1964 ....721 (3)  
1963 ....532 (3)



*Florence High School*

1962 ....550 (3)  
 1961 ....521 (3)  
 1960 ....518 (3)  
 1959 ....693  
 1958 ....636  
 1957 ....579  
 1956 ....675  
 1955 ....638  
 1954 ....524  
 1953 ....510  
 1952 ....467  
 1951 ....467  
 1950 ....433  
 1949 ....416  
 1948 ....401  
 1947 ....360  
 1946 ....340  
 1945 ....330  
 1944 ....361  
 1943 ....382  
 1942 ....351  
 1941 ....374  
 1940 ....287  
 1939 ....286  
 1938 ....261  
 1937 ....245  
 1936 ....230  
 1935 ....234  
 1934 ....206  
 1933 ....214  
 1932 ....222  
 1931 ....199  
 1930 ....186  
 1929 ....151  
 1928 ....150  
 1927 ....137  
 1926 ....125  
 1925 ....109  
 1924 ....105

1986 ....281  
 1985 ....257  
 1984 ....280  
 1983 ....230  
 1982 ....275  
 1981 ....303  
 1980 ....285  
 1979 ....331  
 1978 ....328  
 1977 ....322  
 1976 ....330  
 1975 ....321  
 1974 ....301  
 1973 ....322  
 1972 ....356  
 1971 ....338  
 1970 ....342  
 1969 ....302  
 1968 ....305  
 1967 ....317  
 1966 ....287  
 1965 ....310  
 1964 ....286  
 1963 ....253  
 1962 ....253  
 1961 ....243  
 1960 ....227  
 1959 ....263  
 1958 ....248  
 1957 ....230  
 1956 ....231  
 1955 ....239  
 1954 ....223  
 1953 ....234  
 1952 ....198  
 1951 ....196  
 1950 ....191  
 1949 ....194

1948 ....201  
 1947 ....185  
 1946 ....204  
 1945 ....148  
 1944 ....133  
 1943 ....120  
 1942 ....203  
 1941 ....185  
 1940 ....185  
 1939 ....117  
 1938 ....126  
 1937 ....107  
 1936 ....155  
 1935 ....204  
 1934 ....202  
 1933 ....200  
 1932 ....161  
 1931 ....145  
 1930 ....116  
 1929 ....107  
 1928 ....98  
 1927 ....89  
 1926 ....62  
 1925 ....60  
 1924 ....62  
 1923 ....68  
 1922 ....75  
 1921 ....51  
 1920 ....(unk.)  
 1919 ....(unk.)

**FLOWING WELLS (TUCSON)  
 "Caballeros"**

2005 ....1,914  
 2004 ....1,906  
 2003 ....1,956  
 2002 ....1,974  
 2001 ....2,002

**FLORENCE  
 "Gophers"**

2005 ....586  
 2004 ....422  
 2003 ....373  
 2002 ....376  
 2001 ....361  
 2000 ....355  
 1999 ....353  
 1998 ....366  
 1997 ....348  
 1996 ....335  
 1995 ....305  
 1994 ....262  
 1993 ....273  
 1992 ....281  
 1991 ....280  
 1990 ....296  
 1989 ....313  
 1988 ....306  
 1987 ....296



*Fort Thomas High School*

2000 ....2,043  
 1999 ....1,977  
 1998 ....1,878  
 1997 ....1,885  
 1996 ....1,867  
 1995 ....1,885  
 1994 ....1,919  
 1993 ....1,865  
 1992 ....1,790  
 1991 ....1,592  
 1990 ....1,517  
 1989 ....1,575  
 1988 ....1,275  
 1987 ....1,524  
 1986 ....1,466  
 1985 ....1,347  
 1984 ....1,132  
 1983 ....1,149  
 1982 ....1,159  
 1981 ....1,216  
 1980 ....1,247  
 1979 ....1,266  
 1978 ....1,278  
 1977 ....1,239  
 1976 ....1,272  
 1975 ....1,316  
 1974 ....1,250  
 1973 ....1,245  
 1972 ....1,175  
 1971 ....1,041  
 1970 ....969  
 1969 ....960  
 1968 ....879  
 1967 ....858  
 1966 ....821  
 1965 ....795  
 1964 ....689  
 1963 ....721  
 1962 ....566  
 1961 ....471  
 1960 ....385  
 1959 ....272  
 1958 ....232  
 1957 ....205  
 1956 ....200  
 1955 ....93  
 1954 ....46

**FORT THOMAS  
"Apaches"**

2005 ....180  
 2004 ....192  
 2003 ....186  
 2002 ....169  
 2001 ....172  
 2000 ....174  
 1999 ....176  
 1998 ....176  
 1997 ....184  
 1996 ....173  
 1995 ....160

1994 ....158  
 1993 ....144  
 1992 ....135  
 1991 ....116  
 1990 ....121  
 1989 ....121  
 1988 ....134  
 1987 ....139  
 1986 ....145  
 1985 ....161  
 1984 ....170  
 1983 ....184  
 1982 ....170  
 1981 ....183  
 1980 ....159  
 1979 ....157  
 1978 ....171  
 1977 ....172  
 1976 ....158  
 1975 ....154  
 1974 ....129  
 1973 ....117  
 1972 ....114  
 1971 ....110  
 1970 ....131  
 1969 ....136  
 1968 ....127  
 1967 ....116  
 1966 ....136  
 1965 ....136  
 1964 ....100  
 1963 ....104  
 1962 ....108  
 1961 ....92  
 1960 ....83  
 1959 ....78  
 1958 ....77  
 1957 ....79  
 1956 ....78

1955 ....77  
 1954 ....64  
 1953 ....58

**FOUNTAIN HILLS  
"Falcons"**

2005 ....849  
 2004 ....896  
 2003 ....898  
 2002 ....866  
 2001 ....801  
 2000 ....744  
 1999 ....709  
 1998 ....658  
 1997 ....662  
 1996 ....599  
 1995 ....569  
 1994 ....481  
 1993 ....489

**FREDONIA  
"Lynx"**

2005 ....129  
 2004 ....119  
 2003 ....117  
 2002 ....112  
 2001 ....120  
 2000 ....131  
 1999 ....115  
 1998 ....125  
 1997 ....122  
 1996 ....142  
 1995 ....150  
 1994 ....126  
 1993 ....120  
 1992 ....112  
 1991 ....124  
 1990 ....142  
 1989 ....142



*Fountain Hills High School*



1988 ....126  
 1985 ....117  
 1984 ....124  
 1983 ....120  
 1982 ....114  
 1981 ....115  
 1980 ....116  
 1979 ....119  
 1978 ....114  
 1977 ....112  
 1976 ....108  
 1975 ....98  
 1974 ....96  
 1973 ....95  
 1972 ....87  
 1971 ....74  
 1970 ....90  
 1969 ....89  
 1968 ....84  
 1967 ....94

**GANADO**  
**“Hornets”**

2005 ....849  
 2004 ....834  
 2003 ....753  
 2002 ....747  
 2001 ....775  
 2000 ....750  
 1999 ....715  
 1998 ....710  
 1997 ....738  
 1996 ....699  
 1995 ....700  
 1994 ....684  
 1993 ....617  
 1992 ....600  
 1991 ....575  
 1990 ....555  
 1989 ....551  
 1988 ....531  
 1987 ....511  
 1986 ....506  
 1985 ....489  
 1984 ....542  
 1983 ....515  
 1982 ....589  
 1981 ....581  
 1980 ....550  
 1979 ....505  
 1978 ....(unk.)  
 1977 ....(unk.)  
 1976 ....456  
 1975 ....414  
 1974 ....450  
 1973 ....412  
 1972 ....379  
 1971 ....340  
 1970 ....313  
 1969 ....268  
 1968 ....196

1967 ....188

**GERARD CATHOLIC (PHOENIX)**  
**“Redcoats”**

1989 ....257  
 1988 ....282  
 1987 ....345  
 1986 ....448  
 1985 ....541  
 1984 ....550  
 1983 ....603  
 1982 ....500  
 1981 ....542  
 1980 ....558  
 1979 ....520  
 1978 ....552  
 1977 ....581  
 1976 ....600  
 1975 ....630  
 1974 ....616  
 1973 ....609  
 1972 ....582  
 1971 ....622  
 1970 ....624  
 1969 ....623  
 1968 ....607  
 1967 ....648  
 1966 ....568  
 1965 ....483  
 1964 ....294  
 1963 ....146

**GILA BEND**  
**“Gila Monsters”**

2005 ....148  
 2004 ....150  
 2003 ....175  
 2002 ....154

20001 ..177  
 2000 ....208  
 1999 ....201  
 1998 ....195  
 1997 ....207  
 1996 ....186  
 1995 ....182  
 1994 ....195  
 1993 ....197  
 1992 ....186  
 1991 ....208  
 1990 ....200  
 1989 ....185  
 1988 ....166  
 1987 ....166  
 1986 ....158  
 1985 ....143  
 1984 ....143  
 1983 ....154  
 1982 ....165  
 1981 ....182  
 1980 ....170  
 1979 ....203  
 1978 ....218  
 1977 ....230  
 1976 ....224  
 1975 ....176  
 1974 ....174  
 1973 ....194  
 1972 ....185  
 1971 ....175  
 1970 ....180  
 1969 ....167  
 1968 ....166  
 1967 ....161  
 1966 ....160  
 1965 ....158  
 1964 ....152



*Old Gilbert High School*

1963 ....141  
 1962 ....128  
 1961 ....103  
 1960 ....125  
 1959 ....141  
 1958 ....100  
 1957 ....73  
 1956 ....unk.

**GILBERT  
 "Tigers"**

2005 ....3,147  
 2004 ....3,008  
 2003 ....3,016  
 2002 ....3,009  
 2001 ....3,016  
 2000 ....2,922  
 1999 ....2,870  
 1998 ....2,848  
 1997 ....2,514  
 1996 ....2,205  
 1995 ....1,822  
 1994 ....2,089  
 1993 ....3,391  
 1992 ....3,142  
 1991 ....2,856  
 1990 ....2,621  
 1989 ....2,393  
 1988 ....1,928  
 1987 ....1,750  
 1986 ....1,685  
 1985 ....1,404  
 1984 ....1,327  
 1983 ....1,285  
 1982 ....1,214  
 1981 ....1,197  
 1980 ....1,155  
 1979 ....1,053  
 1978 ....879  
 1977 ....869  
 1976 ....853  
 1975 ....626  
 1974 ....510  
 1973 ....430  
 1972 ....409  
 1971 ....380  
 1970 ....359  
 1969 ....334  
 1968 ....322  
 1967 ....307  
 1966 ....294  
 1965 ....274  
 1964 ....262  
 1963 ....266  
 1962 ....238  
 1961 ....220  
 1960 ....202  
 1959 ....220  
 1958 ....223  
 1957 ....193  
 1956 ....165

1955 ....164  
 1954 ....157  
 1953 ....140  
 1952 ....138  
 1951 ....128  
 1950 ....133  
 1949 ....119  
 1948 ....107  
 1947 ....160  
 1946 ....164  
 1945 ....82  
 1944 ....83  
 1943 ....84  
 1942 ....104  
 1941 ....106  
 1940 ....117  
 1939 ....111  
 1938 ....107  
 1937 ....110  
 1936 ....107  
 1935 ....111 (5)  
 1934 ....116 (5)  
 1933 ....126 (5)  
 1932 ....137 (5)  
 1931 ....117 (5)  
 1930 ....194 (5)  
 1929 ....174 (5)  
 1928 ....169 (5)  
 1927 ....106  
 1926 ....74

**GLENDALE "Cardinals"**

2005 ....1,497  
 2004 ....1,483  
 2003 ....1,566  
 2002 ....1,428  
 2001 ....1,398  
 2000 ....1,326

1999 ....1,308  
 1998 ....1,339  
 1997 ....1,332  
 1996 ....1,312  
 1995 ....1,175  
 1994 ....1,091  
 1993 ....1,111  
 1992 ....1,064  
 1991 ....1,053  
 1990 ....1,061  
 1989 ....1,080  
 1988 ....1,129  
 1987 ....1,129  
 1986 ....1,088  
 1985 .... 977  
 1984 ....1,026  
 1983 ....1,036  
 1982 ....1,075  
 1981 ....1,154  
 1980 ....1,257  
 1979 ....1,532  
 1978 ....1,765  
 1977 ....2,133  
 1976 ....2,121  
 1975 ....1,993  
 1974 ....2,004  
 1973 ....1,893  
 1972 ....1,931  
 1971 ....1,884  
 1970 ....2,098  
 1969 ....1,878  
 1968 ....1,882  
 1967 ....1,853  
 1966 ....1,883  
 1965 ....1,953  
 1964 ....1,768  
 1963 ....1,636  
 1962 ....1,473



**Globe High School**

1961 ....1,295  
1960 ....1,121  
1959 .... 981  
1958 .... 999  
1957 .... 970  
1956 .... 925  
1955 ....1,031  
1954 ....1,027  
1953 ....1,198  
1952 ....1,079  
1951 ....1,030  
1950 .... 973  
1949 .... 938  
1948 .... 806  
1947 .... 768  
1946 .... 702  
1945 .... 558  
1944 .... 424  
1943 .... 460  
1942 .... 454  
1941 .... 461  
1940 .... 463  
1939 .... 443  
1938 .... 418  
1937 .... 404  
1936 .... 373  
1935 .... 368  
1934 .... 353  
1933 .... 344  
1932 .... 341  
1931 .... 333  
1930 .... 316  
1929 .... 310  
1928 .... 281  
1927 .... 263  
1926 .... 260  
1925 .... 223  
1924 .... 204  
1923 .... 184  
1922 .... 166  
1921 .... 152  
1920 .... 177  
1919 .... 125  
1918 .... 97  
1917 .... 84  
1916 .... 73  
1915 .... 58  
1914 .... 45  
1913 .... 36  
1912 .... 21

**GLOBE**  
**"Tigers"**

2005 ....733  
2004 ....721  
2003 ....689  
2002 ....674  
2001 ....680  
2000 ....761  
1999 ....770  
1998 ....771

1997 ....778  
1996 ....747  
1995 ....696  
1994 ....677  
1993 ....652  
1992 ....662  
1991 ....751  
1990 ....783  
1989 ....808  
1988 ....733  
1987 ....943  
1986 ....910  
1985 ....923  
1984 ....876  
1983 ....944  
1982 ....1,070  
1981 ....1,081  
1980 ....1,016  
1979 ....1,029  
1978 ....903  
1977 ....913  
1976 ....1,012  
1975 ....1,016  
1974 ....968  
1973 ....912  
1972 ....893  
1971 ....830  
1970 ....880  
1969 ....850  
1968 ....862  
1967 ....825  
1966 ....802  
1965 ....781  
1964 ....754  
1963 ....717  
1962 ....642  
1961 ....593  
1960 ....573  
1959 ....541  
1958 ....531  
1957 ....546  
1956 ....510  
1955 ....508  
1954 ....556  
1953 ....468  
1952 ....473  
1951 ....446  
1950 ....406  
1949 ....467  
1948 ....436  
1947 ....418  
1946 ....386  
1945 ....357  
1944 ....289  
1943 ....298  
1942 ....405  
1941 ....460  
1940 ....447  
1939 ....444  
1938 ....431  
1937 ....410

1936 ....426  
1935 ....410  
1934 ....405  
1933 ....354  
1932 ....453  
1931 ....407  
1930 ....344  
1929 ....356  
1928 ....276  
1927 ....274  
1926 ....233  
1925 ....243  
1924 ....233  
1923 ....(unk.)  
1922 ....(unk.)  
1921 ....(unk.)  
1920 ....198

**GOLDWATER (PHOENIX)**

**"Bulldogs"**

2005 ....2,036  
2004 ....2,226  
2003 ....2,309  
2002 ....2,489  
2001 ....2,358  
2000 ....2,231  
1999 ....2,034  
1998 ....1,977  
1997 ....1,987  
1996 ....1,891  
1995 ....1,849  
1994 ....1,896  
1993 ....1,892  
1992 ....2,004  
1991 ....2,042  
1990 ....2,165  
1989 ....2,210  
1988 ....1,533  
1987 ....1,046

**GRAND CANYON**

**"Phantoms"**

2005 ....100  
2004 ....112  
2003 ....123  
2002 ....108  
2001 ....84  
2000 ....86  
1999 ....96  
1998 ....91  
1997 ....85  
1996 ....85  
1995 ....101  
1994 ....79  
1993 ....77  
1992 ....66  
1991 ....64  
1990 ....56  
1989 ....55  
1988 ....54  
1987 ....75



1986 ....73  
1985 ....87  
1984 ....76  
1983 ....74  
1982 ....76  
1981 ....74  
1980 ....73  
1979 ....65  
1978 ....75  
1977 ....76  
1976 ....82  
1975 ....75  
1974 ....82  
1973 ....73  
1972 ....77  
1971 ....79  
1970 ....79  
1969 ....73  
1968 ....65  
1967 ....68  
1966 ....88  
1965 ....93  
1964 ....76  
1963 ....75  
1962 ....69  
1961 ....59  
1960 ....65  
1959 ....54  
1958 ....46  
1957 ....27  
1956 ....15  
1955 ....17

**GREEN FIELDS (TUCSON)**

**"Griffins"**  
2005 ....87  
2004 ....98  
2003 ....111  
2002 ....129  
2001 ....128  
2000 ....122  
1999 ....118  
1998 ....116  
1997 ....105  
1996 ....104  
1995 ....104  
1994 ....116  
1993 ....141  
1992 ....105  
1991 .... 97  
1990 ....115  
1989 ....114  
1988 ....109  
1987 ....100  
1986 .... 97

**GREENWAY (PHOENIX)**

**"Demons"**  
2005 ....1,739  
2004 ....1,722  
2003 ....1,641

2002 ....1,535  
2001 ....1,656  
2000 ....1,685  
1999 ....1,723  
1998 ....1,741  
1997 ....1,717  
1996 ....1,670  
1995 ....1,640  
1994 ....1,559  
1993 ....1,598  
1992 ....1,539  
1991 ....1,553  
1990 ....1,624  
1989 ....1,701  
1988 ....1,833  
1987 ....1,901  
1986 ....1,853  
1985 ....1,858  
1984 ....1,779  
1983 ....1,763  
1982 ....2,070  
1981 ....2,278  
1980 ....2,639  
1979 ....2,637  
1978 ....2,342  
1977 ....2,228  
1976 ....2,043  
1975 ....1,424  
1974 .... 867

**GREYHILLS (TUBA CITY)**

**"Knights"**  
2005 ....516  
2004 ....522  
2003 ....464  
2002 ....429  
2001 ....423  
2000 ....433  
1999 ....513  
1998 ....518  
1997 ....462  
1996 ....453  
1995 ....437  
1994 ....344  
1993 ....472  
1992 ....446  
1991 ....528  
1990 ....528

**HAMILTON (CHANDLER)**

**"Huskies"**  
2005 ....3,073  
2004 ....3,285  
2003 ....3,251  
2002 ....3,219  
2001 ....2,862  
2000 ....2,800  
1999 ....1,600

**HAYDEN (WINKELMAN)**

**"Lobos"**  
2005 ....125  
2004 ....119  
2003 ....126  
2002 ....129  
2001 ....146  
2000 ....146  
1999 ....152  
1998 ....155  
1997 ....171  
1996 ....176  
1995 ....148  
1994 ....158  
1993 ....147  
1992 ....130  
1991 ....147  
1990 ....155  
1989 ....166  
1988 ....161  
1987 ....165  
1986 ....175  
1985 ....183  
1984 ....177  
1983 ....189  
1982 ....210  
1981 ....226  
1980 ....228  
1979 ....236  
1978 ....232  
1977 ....262  
1976 ....260  
1975 ....236  
1974 ....217  
1973 ....210  
1972 ....238  
1971 ....235  
1970 ....252  
1969 ....255  
1968 ....245  
1967 ....262  
1966 ....286  
1965 ....293  
1964 ....258  
1963 ....(unk.)  
1962 ....(unk.)  
1961 ....254  
1960 ....206

**HIGHLAND (GILBERT)**

**"Hawks"**  
2005 ....2,494  
2004 ....2,361  
2003 ....2,396  
2002 ....2,805  
2001 ....2,677  
2000 ....2,709  
1999 ....2,752  
1998 ....3,059  
1997 ....2,942  
1996 ....2,521

1995 ....2,290  
1994 ....1,682  
1993 ....1,820

**HIGLEY (GILBERT)  
"Knights"**

2005 ....1,490  
2004 ....1,150  
2003 ....835  
2002 ....603

**HOLBROOK  
"Roadrunners"**

2005 ....774  
2004 ....768  
2003 ....757  
2002 ....688  
2001 ....714  
2000 ....735  
1999 ....751  
1998 ....748  
1997 ....718  
1996 ....673  
1995 ....700  
1994 ....679  
1993 ....649  
1992 ....650  
1991 ....671  
1990 ....701  
1989 ....773  
1988 ....769  
1987 ....771  
1986 ....788  
1985 ....693  
1984 ....727  
1983 ....725  
1982 ....723  
1981 ....747  
1980 ....771  
1979 ....794  
1978 ....806  
1977 ....801  
1976 ....811  
1975 ....701  
1974 ....671  
1973 ....667  
1972 ....680  
1971 ....650  
1970 ....608  
1969 ....610  
1968 ....563  
1967 ....575  
1966 ....566  
1965 ....534  
1964 ....527  
1963 ....531  
1962 ....(unk.)  
1961 ....366  
1960 ....337  
1959 ....333  
1958 ....284

1957 ....276  
1956 ....239  
1955 ....317  
1954 ....333  
1952 ....(unk.)  
1951 ....(unk.)  
1950 ....(unk.)  
1949 ....(unk.)  
1948 ....(unk.)  
1947 ....160  
1946 ....137  
1945 ....121  
1944 ....138  
1943 ....142  
1942 ....157  
1941 ....158  
1940 ....143  
1939 ....134  
1938 ....(unk.)  
1937 ....162  
1936 ....152  
1935 ....140

1934 ....127  
1933 ....86  
1932 ....94  
1931 ....84  
1930 ....55  
1929 ....52  
1928 ....44  
1927 ....(unk.)  
1926 ....(unk.)  
1925 ....(unk.)

**HOPI (KEAMS CANYON)  
"Bruins"**

2005 ....569  
2004 ....545  
2003 ....554  
2002 ....524  
2001 ....477  
2000 ....470  
1999 ....427  
1998 ....381  
1997 ....334



*Old Jerome High School*

1996 ....354  
 1995 ....356  
 1994 ....369  
 1993 ....387  
 1992 ....376  
 1991 ....338  
 1990 ....326  
 1989 ....345  
 1988 ....

**HORIZON (SCOTTSDALE)  
 "Huskies"**

2005 ....2,394  
 2004 ....2,399  
 2003 ....2,393  
 2002 ....2,416  
 2001 ....2,485  
 2000 ....2,575  
 1999 ....2,681  
 1998 ....2,702  
 1997 ....2,785  
 1996 ....2,705  
 1995 ....2,681  
 1994 ....2,634  
 1993 ....2,490  
 1992 ....2,445  
 1991 ....2,377  
 1990 ....2,394  
 1989 ....2,450  
 1988 ....2,463  
 1987 ....2,496  
 1986 ....2,564  
 1985 ....2,502  
 1984 ....2,240  
 1983 ....1,960  
 1982 ....1,696  
 1981 ....1,197

**HORIZON HONORS (PHOENIX)  
 "Eagles"**

2005 ....280  
 2004 ....288  
 2003 ....262  
 2002 ....231  
 2001 ....203  
 2000 ....118  
 1999 ....88

**INDEPENDENCE (GLENDALE)  
 "Patriots"**

2005 ....1,631  
 2004 ....1,745  
 2003 ....1,593  
 2002 ....1,544  
 2001 ....1,405  
 2000 ....1,326  
 1999 ....1,288  
 1998 ....1,271  
 1997 ....1,262  
 1996 ....1,268  
 1995 ....1,177

1994 ....1,091  
 1993 ....1,082  
 1992 ....1,035  
 1991 ....1,009  
 1990 .... 989  
 1989 ....1,059  
 1988 ....1,015  
 1987 ....989  
 1986 ....917  
 1985 ....854  
 1984 ....800  
 1983 ....802  
 1982 ....859  
 1981 ....912  
 1980 ....1,290  
 1979 ....845  
 1978 ....413

**IRONWOOD (GLENDALE)  
 "Eagles"**

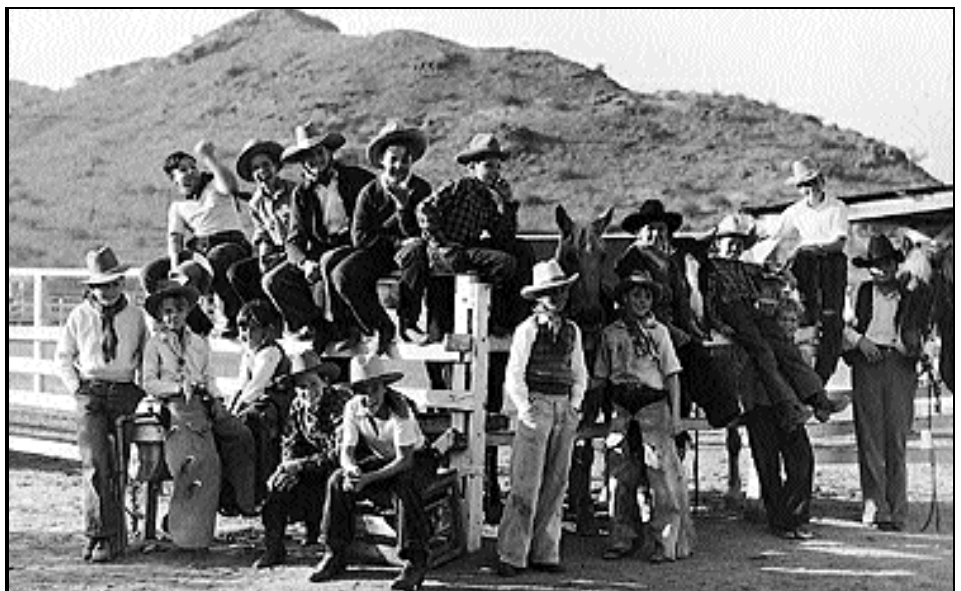
2005 ....2,161  
 2004 ....2,126  
 2003 ....2,108  
 2002 ....2,030  
 2001 ....1,945  
 2000 ....1,927  
 1999 ....1,982  
 1998 ....2,005  
 1997 ....1,992  
 1996 ....1,997  
 1995 ....1,889  
 1994 ....1,838  
 1993 ....1,811  
 1992 ....1,799  
 1991 ....1,746  
 1990 ....1,735  
 1989 ....1,610  
 1988 ....1,087  
 1987 ....747

**IRONWOOD RIDGE (TUCSON)  
 "Nighthawks"**

2005 ....1,816  
 2004 ....1,666  
 2003 ....1,170  
 2002 ....740

**JEROME "Muckers"**

1951 ....100  
 1950 ....97  
 1949 ....102  
 1948 ....124  
 1947 ....106  
 1946 ....98  
 1945 ....95  
 1944 ....131  
 1943 ....168  
 1942 ....203  
 1941 ....195  
 1940 ....190  
 1939 ....197  
 1938 ....175  
 1937 ....186  
 1936 ....181  
 1935 ....195  
 1934 ....193  
 1933 ....179  
 1932 ....173  
 1931 ....173  
 1930 ....155  
 1929 ....135  
 1928 ....147  
 1927 ....115  
 1926 ....124  
 1925 ....108  
 1924 ....124  
 1923 ....93  
 1922 ....77



*Boys at the Judson School.*



1921 ....74  
1920 ....59  
1919 ....50

**JOKAKE SCHOOL FOR GIRLS  
(Scottsdale)**

1945 ....40  
1944 ....40  
1943 ....40  
1942 ....40  
1941 ....40  
1940 ....40  
1939 ....40  
1938 ....40  
1937 ....40  
1936 ....40  
1935 ....40  
1934 ....40  
1933 ....40  
1932 ....40

**JOSEPH CITY  
"Wildcats"**

2005 ....150  
2004 ....151  
2003 ....150  
2002 ....141  
2001 ....142  
2000 ....156  
1999 ....146  
1998 ....167  
1997 ....171  
1996 ....165  
1995 ....144  
1994 ....139  
1993 ....113  
1992 ....121  
1991 ....122  
1990 ....110  
1989 ....98  
1988 ....104  
1987 ....100  
1986 ....119  
1985 ....111  
1984 ....108  
1983 ....122  
1982 ....137  
1981 ....162  
1980 ....182  
1979 ....162  
1978 ....140  
1977 ....135  
1976 ....130  
1975 ....82  
1974 ....74  
1973 ....63  
1972 ....42  
1971 ....28  
1970 ....36  
1969 ....40  
1968 ....(unk.)

**JUDSON (SCOTTSDALE)**

**"Cougars"**

1999 ....134  
1998 ....141  
1997 ....195  
1996 ....172  
1995 ....195  
1994 ....228  
1993 ....227  
1992 ....206  
1991 ....213  
1990 ....198  
1989 ....219  
1988 ....201  
1987 ....217  
1986 ....238  
1985 ....246  
1984 ....255  
1983 ....267  
1982 ....287  
1981 ....223  
1980 ....366  
1979 ....285  
1978 ....287  
1977 ....268  
1976 ....280  
1975 ....216  
1974 ....255  
1973 ....251  
1972 ....249  
1971 ....336  
1970 ....394  
1969 ....296  
1968 ....305  
1967 ....304  
1966 ....358  
1965 ....328

1964 ....326  
1963 ....(unk.)  
1962 ....(unk.)  
1961 ....286  
1960 ....287  
1959 ....217

**KINGMAN**

**"Bulldogs"**

2005 ....2,348  
2004 ....2,455  
2003 ....2,354  
2002 ....2,150  
2001 ....2,173  
2000 ....2,215  
1999 ....2,216  
1998 ....2,132  
1997 ....2,085  
1996 ....1,952  
1995 ....1,811  
1994 ....1,715  
1993 ....1,643  
1992 ....1,458  
1991 ....1,450  
1990 ....1,435  
1989 ....1,403  
1988 ....1,382  
1987 ....1,403  
1986 ....1,359  
1985 ....1,239  
1984 ....1,265  
1983 ....1,247  
1982 ....1,298  
1981 ....1,315  
1980 ....1,302  
1979 ....1,286  
1978 ....1,210  
1977 ....1,112



***Original Kingman High School***

1976 ....1,144  
 1975 ....1,021  
 1974 ....1,012  
 1973 .... 976  
 1972 ....1,008  
 1971 .... 946  
 1970 ....1,176  
 1969 ....1,057  
 1968 .... 895  
 1967 .... 788  
 1966 ....773  
 1965 ....672  
 1964 ....625  
 1963 ....536  
 1962 ....463  
 1961 ....397  
 1960 ....353  
 1959 ....346  
 1958 ....345  
 1957 ....340  
 1956 ....333  
 1955 ....325  
 1954 ....260  
 1953 ....273  
 1952 ....272  
 1951 ....300  
 1950 ....326  
 1949 ....324  
 1948 ....314  
 1947 ....275  
 1946 ....210  
 1945 ....203  
 1944 ....221  
 1943 ....225  
 1942 ....242  
 1941 ....239  
 1940 ....256  
 1939 ....252  
 1938 ....214  
 1937 ....206  
 1936 ....196  
 1935 ....153  
 1934 ....129  
 1933 ....143  
 1932 ....155  
 1931 ....152  
 1930 ....152  
 1929 ....138  
 1928 ....129  
 1927 ....95  
 1926 ....80  
 1925 ....79  
 1924 ....66  
 1923 ....84  
 1922 ....73  
 1921 ....66  
 1920 ....62  
 1919 ....59  
 1918 ....55  
 1917 ....35

**KOFA (YUMA)**  
**“Kings”**  
 2005 ....2,236  
 2004 ....2,115  
 2003 ....2,565  
 2002 ....3,127  
 2001 ....3,035  
 2000 ....2,950  
 1999 ....2,795  
 1998 ....2,772  
 1997 ....2,698  
 1996 ....2,536  
 1995 ....2,548  
 1994 ....2,452  
 1993 ....2,289  
 1992 ....2,243  
 1991 ....2,143  
 1990 ....2,254  
 1989 ....2,410  
 1988 ....2,465  
 1987 ....2,473  
 1986 ....2,523  
 1985 ....2,510  
 1984 ....2,447  
 1983 ....2,328  
 1982 ....2,275  
 1981 ....2,282  
 1980 ....2,364  
 1979 ....2,384  
 1978 ....2,422  
 1977 ....2,517  
 1976 ....2,436  
 1975 ....2,283  
 1974 ....2,250  
 1973 ....2,134  
 1972 ....2,030  
 1971 ....1,904  
 1970 ....1,768  
 1969 ....1,689

1968 ....1,637  
 1967 ....1,622  
 1966 ....1,624  
 1965 ....1,525  
 1964 ....1,500  
 1963 ....1,423  
 1962 ....1,300  
 1961 ....860  
 1960 ....587

**LA JOYA (AVONDALE)**  
**“Fighting Lobos”**  
 2005 ....2,324  
 2004 ....904  
 2003 ....448

**LAKE HAVASU**  
**“Knights”**  
 2005 ....1,870  
 2004 ....1,849  
 2003 ....1,792  
 2002 ....1,683  
 2001 ....1,604  
 2000 ....1,581  
 1999 ....1,521  
 1998 ....1,517  
 1997 ....1,532  
 1996 ....1,485  
 1995 ....1,428  
 1994 ....1,361  
 1993 ....1,258  
 1992 ....1,144  
 1991 ....1,048  
 1990 ....988  
 1989 ....966  
 1988 ....977  
 1987 ....985  
 1986 ....945  
 1985 ....985



**Litchfield Park High School**

1984 ....1,058  
 1983 ....1,060  
 1982 ....1,035  
 1981 ....1,156  
 1980 ....1,103  
 1979 ....1,041  
 1978 ....1,005  
 1977 ....1,128  
 1976 ....999  
 1975 ....773  
 1974 ....660  
 1973 ....563  
 1972 ....456  
 1971 ....331  
 1970 ....322

**LIFE SCHOOL (MESA)**

**“Lightning”**

2005 ....270  
 2004 ....244  
 2003 ....252  
 2002 ....100  
 2001 ....100

**LITCHFIELD PARK**

**“Owls”**

1956 ....282  
 1955 ....206  
 1954 ....197  
 1953 ....175  
 1952 ....144  
 1951 ....134  
 1950 ....145  
 1949 ....141  
 1948 ....143  
 1947 ....147

**LOURDES CATHOLIC (NOGALES)**

**“Warriors”**

2005 ....91  
 2004 ....94  
 2003 ....85  
 2002 ....91  
 2001 ....87  
 2000 ....76  
 1999 ....77  
 1998 ....93

**MANY FARMS**

**“Lobos”**

2005 ....439  
 2004 ....428  
 2003 ....414  
 2002 ....383  
 2001 ....398  
 2000 ....318  
 1999 ....324  
 1998 ....347  
 1997 ....351  
 1996 ....375  
 1995 ....416

1994 ....450  
 1993 ....431  
 1992 ....359  
 1991 ....385  
 1990 ....421  
 1989 ....446  
 1988 ....467  
 1987 ....489  
 1986 ....627  
 1985 ....646  
 1984 ....637  
 1983 ....668  
 1982 ....694  
 1981 ....667  
 1980 ....653  
 1979 ....657

**MARANA**

**“Tigers”**

2005 ....1,726  
 2004 ....1,656  
 2003 ....1,613  
 2002 ....1,575  
 2001 ....1,507  
 2000 ....1,520  
 1999 ....1,480  
 1998 ....1,403  
 1997 ....1,410  
 1996 ....1,245  
 1995 ....1,083  
 1994 .... 900  
 1993 .... 841  
 1992 .... 769  
 1991 .... 701  
 1990 .... 695  
 1989 .... 968  
 1988 .... 952

1987 ....1,255  
 1986 ....1,255  
 1985 ....1,258  
 1984 ....1,239  
 1983 ....1,203  
 1982 ....1,137  
 1981 ....1,090  
 1980 ....1,015  
 1979 ....985  
 1978 ....970  
 1977 ....950  
 1976 ....891  
 1975 ....724  
 1974 ....639  
 1973 ....561  
 1972 ....470  
 1971 ....410  
 1970 ....433  
 1969 ....399  
 1968 ....356  
 1967 ....362  
 1966 ....360  
 1965 ....355  
 1964 ....352  
 1963 ....350  
 1962 ....347  
 1961 ....342  
 1960 ....330  
 1959 ....195  
 1958 ....197  
 1957 ....156  
 1956 ....162  
 1955 ....131  
 1954 ....117  
 1953 ....90  
 1952 ....68  
 1951 ....66



*Original Mayer High School*



1950 ....52  
1949 ....46  
1948 ....39

**MARCOS DE NIZA (TEMPE)**

**“Padres”**

2005 ....2,010  
2004 ....1,956  
2003 ....1,921  
2002 ....1,903  
2001 ....2,027  
2000 ....2,032  
1999 ....2,043  
1998 ....2,113  
1997 ....2,054  
1996 ....2,025  
1995 ....2,022  
1994 ....2,021  
1993 ....2,053  
1992 ....2,205  
1991 ....2,228  
1990 ....2,331  
1989 ....2,327  
1988 ....2,287  
1987 ....2,159  
1986 ....2,050  
1985 ....1,865  
1984 ....1,817  
1983 ....1,856  
1982 ....1,857  
1981 ....1,950  
1980 ....2,150  
1979 ....2,232  
1978 ....1,990  
1977 ....1,917  
1976 ....2,130  
1975 ....1,976  
1974 ....1,235  
1973 .... 707

1986 ....247  
1985 ....221  
1984 ....208  
1983 ....188  
1982 ....184  
1981 ....180  
1980 ....171  
1979 ....171  
1978 ....210  
1977 ....212  
1976 ....218  
1975 ....147  
1974 ....136  
1973 ....142  
1972 ....144  
1971 ....130  
1970 ....121  
1969 ....119  
1968 ....97  
1967 ....97  
1966 ....81  
1965 ....77  
1964 ....87  
1963 ....95  
1962 ....75  
1961 ....75  
1960 ....70  
1959 ....62

**MARYVALE (PHOENIX)**

**“Panthers”**

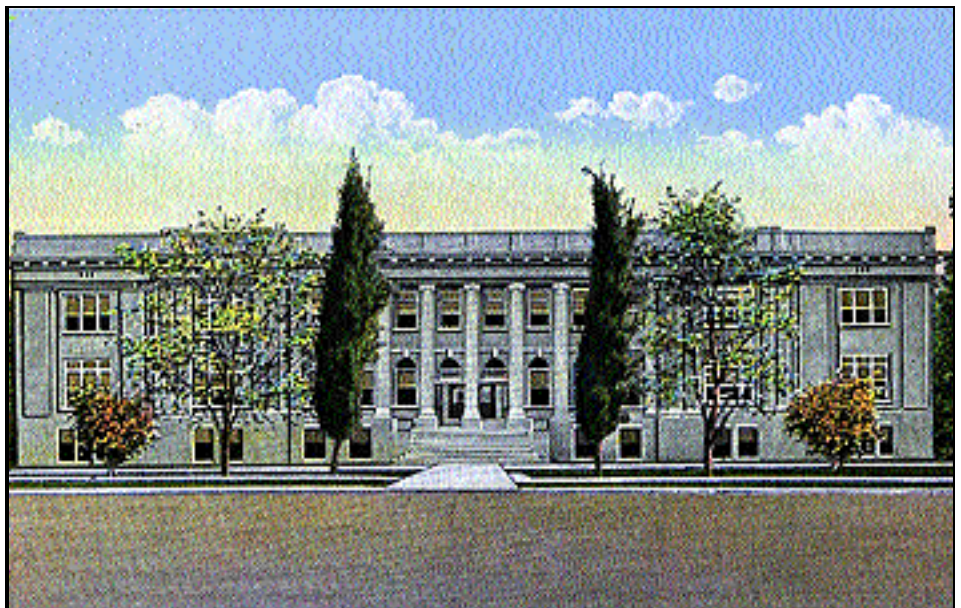
2005 ....2,573  
2004 ....2,425  
2003 ....2,371  
2002 ....2,386  
2001 ....2,288  
2000 ....2,274  
1999 ....2,316

1998 ....2,434  
1997 ....2,316  
1996 ....2,175  
1995 ....2,206  
1994 ....2,281  
1993 ....2,213  
1992 ....2,160  
1991 ....2,134  
1990 ....2,112  
1989 ....2,325  
1988 ....2,662  
1987 ....2,384  
1986 ....2,519  
1985 ....2,478  
1984 ....2,741  
1983 ....2,897  
1982 ....2,870  
1981 ....2,897  
1980 ....3,160  
1979 ....3,367  
1978 ....3,381  
1977 ....3,325  
1976 ....3,201  
1975 ....3,032  
1974 ....2,918  
1973 ....4,619  
1972 ....4,330  
1971 ....3,992  
1970 ....3,770  
1969 ....3,756  
1968 ....3,869  
1967 ....3,730  
1966 ....3,473  
1965 ....3,216  
1964 ....2,737  
1963 ....1,901

**MARICOPA**

**“Rams”**

2005 ....383  
2004 ....343  
2003 ....338  
2002 ....325  
2001 ....329  
2000 ....308  
1999 ....305  
1998 ....277  
1997 ....294  
1996 ....259  
1995 ....249  
1994 ....251  
1993 ....243  
1992 ....212  
1991 ....209  
1990 ....237  
1989 ....269  
1988 ....258  
1987 ....278



*Old Mesa High School*

**MAYER****“Wildcats”**

2005 ....191  
 2004 ....179  
 2003 ....191  
 2002 ....203  
 2001 ....179  
 2000 ....199  
 1999 ....211  
 1998 ....151  
 1997 ....179  
 1996 ....201  
 1995 ....178  
 1994 ....155  
 1993 ....142  
 1992 ....145  
 1991 ....120  
 1990 ....133  
 1989 ....145  
 1988 ....155  
 1987 ....165  
 1986 ....127  
 1985 ....136  
 1984 ....124  
 1983 ....117  
 1982 ....114  
 1981 ....118  
 1980 ....107  
 1979 ....99  
 1978 ....63  
 1977 ....84  
 1976 ....79  
 1975 ....98  
 1974 ....96  
 1973 ....84  
 1972 ....95  
 1971 ....71  
 1970 ....54  
 1969 ....58  
 1968 ....56  
 1967 ....63  
 1966 ....62  
 1965 ....63  
 1964 ....54  
 1963 ....28  
 1962 ....23  
 1961 ....(unknown)  
 1960 ....(unknown)  
 1959 ....(unknown)  
 1958 ....19  
 1957 ....22

**McCLINTOCK (TEMPE)****“Chargers”**

2005 ....1,890  
 2004 ....1,805  
 2003 ....1,806  
 2002 ....1,736  
 2001 ....1,758  
 2000 ....1,841  
 1999 ....1,860

1998 ....1,953  
 1997 ....2,046  
 1996 ....1,986  
 1995 ....2,071  
 1994 ....1,967  
 1993 ....1,947  
 1992 ....1,879  
 1991 ....1,865  
 1990 ....1,832  
 1989 ....1,901  
 1988 ....1,969  
 1987 ....2,103  
 1986 ....2,002  
 1985 ....1,867  
 1984 ....1,805  
 1983 ....1,780  
 1982 ....1,814  
 1981 ....1,923  
 1980 ....2,045  
 1979 ....2,327  
 1978 ....2,291  
 1977 ....2,104  
 1976 ....2,087  
 1975 ....1,955  
 1974 ....2,042  
 1973 ....2,155  
 1972 ....2,317  
 1971 ....2,061  
 1970 ....1,880  
 1969 ....1,804  
 1968 ....1,630  
 1967 ....1,711  
 1966 ....1,141  
 1965 .... 652 (2)

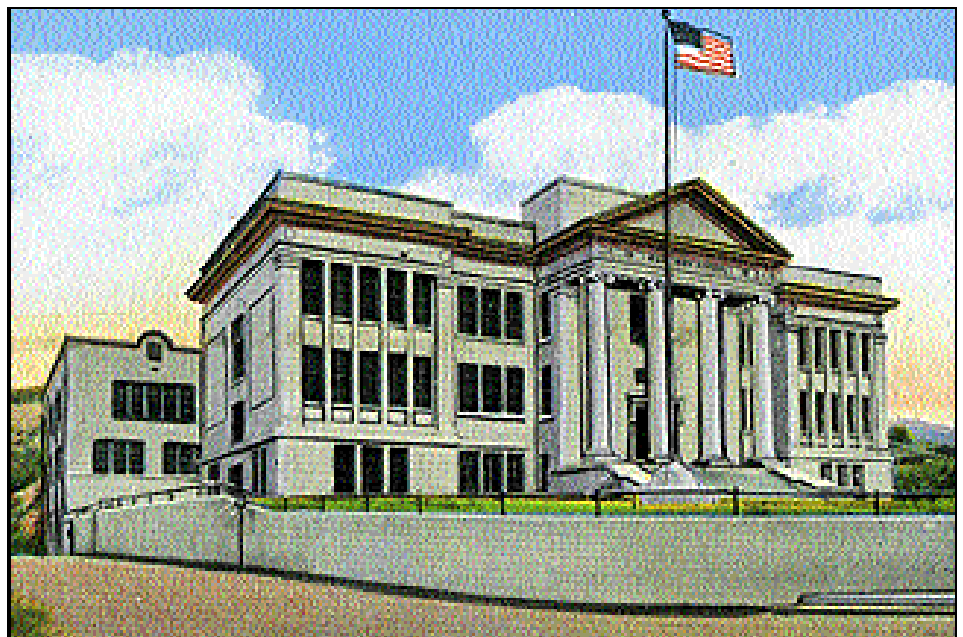
**McNARY “Green Devils”**

1980 ....50  
 1979 ....47

1978 ....(unk.)  
 1977 ....(unk.)  
 1976 ....39  
 1975 ....56  
 1974 ....88  
 1973 ....90  
 1972 ....95  
 1971 ....90  
 1970 ....83  
 1969 ....88  
 1968 ....92  
 1967 ....91

**MESA “Jackrabbits”**

\*2005 ..3,981  
 \*2004 ..3,668  
 \*2003 ..3,701  
 \*2002 ..3,565  
 \*2001 ..3,821  
 \*2000 ..3,763  
 \*1999 ..3,798  
 \*1998 ..3,816  
 \*1997 ..3,745  
 \*1996 ..3,821  
 \*1995 ..3,626  
 \*1994 ..3,685  
 \*1993 ..3,698  
 \*1992 ..3,617  
 \*1991 ..3,312  
 \*1990 ..3,322  
 \*1989 ..3,239  
 \*1988 ..3,416  
 \*1987 ..3,875  
 \*1986 ..3,731  
 \*1985 ..3,306  
 \*1984 ..3,016  
 1983 ....1,968  
 1982 ....2,120

**Original Miami High School**

1981 ....2,837  
1980 ....2,655  
1979 ....2,492  
1978 ....2,818  
1977 ....3,247  
1976 ....3,314  
1975 ....3,000  
1974 ....2,657  
1973 ....2,367  
1972 ....2,200  
1971 ....2,010  
1970 ....1,871  
1969 ....1,724  
1968 ....2,203  
1967 ....2,116  
1966 ....1,578  
1965 ....1,732  
1964 ....2,188  
1963 ....1,940  
1962 ....2,230  
1961 ....2,048  
1960 ....1,882  
1959 ....1,698  
1958 ....1,443  
1957 ....1,246  
1956 ....1,204  
1955 ....1,172  
1954 ....1,061  
1953 ....1,081  
1952 ....1,461  
1951 ....1,476  
1950 ....1,432  
1949 ....1,306  
1948 ....1,271  
1947 ....1,206  
1946 ....1,118  
1945 .... 997  
1944 .... 869  
1943 .... 914  
1942 .... 971  
1941 .... 911  
1940 .... 888  
1939 .... 957  
1938 .... 966  
1937 .... 908  
1936 .... 812  
1935 .... 767  
1934 .... 735  
1933 .... 645  
1932 .... 652  
1931 .... 618  
1930 .... 600  
1929 .... 580  
1928 .... 540  
1927 .... 600  
1926 .... 562  
1925 .... 560  
1924 .... 470  
1923 .... 455  
1922 .... 450  
1921 .... unk.

1920 .... unk.

**MESQUITE (GILBERT)  
"Wildcats"**

2005 ....3,165  
2004 ....3,036  
2003 ....2,918  
2002 ....2,804  
2001 ....2,533  
2000 ....2,458  
1999 ....2,009

**MIAMI "Vandals"**

2005 ....341  
2004 ....364  
2003 ....350  
2002 ....375  
2001 ....365  
2000 ....367  
1999 ....421  
1998 ....465  
1997 ....540  
1996 ....521  
1995 ....577  
1994 ....569  
1993 ....550  
1992 ....769  
1991 ....606  
1990 ....554  
1989 ....585  
1988 ....556  
1987 ....589  
1986 ....582  
1985 ....612  
1984 ....642  
1983 ....677  
1982 ....678  
1981 ....664  
1980 ....657

1979 ....620  
1978 ....731  
1977 ....759  
1976 ....702  
1975 ....704  
1974 ....712  
1973 ....729  
1972 ....722  
1971 ....744  
1970 ....737  
1969 ....765  
1968 ....772  
1967 ....801  
1966 ....787  
1965 ....793  
1964 ....791  
1963 ....727  
1962 ....687  
1961 ....640  
1960 ....667  
1959 ....680  
1958 ....670  
1957 ....671  
1956 ....606  
1955 ....487  
1954 ....517  
1953 ....453  
1952 ....436  
1951 ....445  
1950 ....459  
1949 ....445  
1948 ....485  
1947 ....446  
1946 ....401  
1945 ....399  
1944 ....416  
1943 ....487  
1942 ....497  
1941 ....453



***Mustang at Mogollon High School.***



1940 ....417  
 1939 ....304  
 1938 ....435  
 1937 ....315 (3)  
 1936 ....359 (3)  
 1935 ....400 (3)  
 1934 ....486 (3)  
 1933 ....553 (6)  
 1932 ....628 (6)  
 1931 ....590 (6)  
 1930 ....630 (6)  
 1929 ....605 (6)  
 1928 ....583 (6)  
 1927 ....525 (6)  
 1926 ....458 (6)  
 1925 ....419 (6)  
 1924 ....(unk.)  
 1923 ....(unk.)  
 1922 ....(unk.)  
 1921 ....(unk.)  
 1920 ....218  
 1919 ....(unk.)  
 1918 ....(unk.)  
 1917 ....48

**MILLENNIUM (GOODYEAR)**  
**“Tigers”**

2005 ....1,676  
 2004 ....1,640  
 2003 ....1,508  
 2002 ....1,390  
 2001 ....1,166  
 2000 ....1,210

**MINGUS UNION (COTTONWOOD)**  
**“Marauders”**

2005 ....1,237  
 2004 ....1,243  
 2003 ....1,190  
 2002 ....1,203  
 2001 ....1,200  
 2000 ....1,205  
 1999 ....1,210  
 1998 ....1,197  
 1997 ....1,151  
 1996 ....1,255  
 1995 ....1,202  
 1994 ....1,308  
 1993 ....1,238  
 1992 ....1,156  
 1991 ....1,158  
 1990 ....1,163  
 1989 ....1,154  
 1988 ....1,047  
 1987 ....1,037  
 1986 ....991  
 1985 ....924  
 1984 ....940  
 1983 ....938  
 1982 ....972  
 1981 ....937

1980 ....925  
 1979 ....936  
 1978 ....901  
 1977 ....856  
 1976 ....829  
 1975 ....709  
 1974 ....612  
 1973 ....512  
 1972 ....453  
 1971 ....440  
 1970 ....413  
 1969 ....406  
 1968 ....419  
 1967 ....419  
 1966 ....401  
 1965 ....407  
 1964 ....375  
 1963 ....341  
 1962 ....352  
 1961 ....350  
 1960 ....290  
 1959 ....217

**MOGOLLON (HEBER)**  
**“Mustang”**

2005 ....176  
 2004 ....180  
 2003 ....189  
 2002 ....189  
 2001 ....194  
 2000 ....189  
 1999 ....187  
 1998 ....185  
 1997 ....191  
 1996 ....174  
 1995 ....161

1994 ....147  
 1993 ....134  
 1992 ....123  
 1991 ....113  
 1990 ....105

**MOHAVE (BULLHEAD CITY)**  
**“Thunderbirds”**

2005 ....1,528  
 2004 ....1,418  
 2003 ....1,747  
 2002 ....1,389  
 2001 ....1,308  
 2000 ....1,196  
 1999 ....1,162  
 1998 ....1,124  
 1997 ....1,128  
 1996 ....1,116  
 1995 ....1,053  
 1994 ....1,030  
 1993 ....1,007  
 1992 ....1,287  
 1991 ....1,458  
 1990 ....1,253  
 1989 ....1,275  
 1988 ....955  
 1987 ....1,134  
 1986 ....1,032  
 1985 .... 937  
 1984 .... 864  
 1983 .... 823  
 1982 .... 790  
 1981 .... 780  
 1980 .... 728  
 1979 .... 665  
 1978 ....(unk.)



*Moon Valley High School Rocket.*

1977 ....(unk.)  
 1976 .... 523  
 1975 .... 446  
 1974 .... 349  
 1973 .... 356  
 1972 .... 316  
 1971 .... 249  
 1970 .... 262

**MONUMENT VALLEY (KAYENTA)**  
**"Mustangs"**

2005 ....995  
 2004 ....1,004  
 2003 ....947  
 2002 ....934  
 2001 ....928  
 2000 ....908  
 1999 ....927  
 1998 ....944  
 1997 ....927  
 1996 ....946  
 1995 ....938  
 1994 ....962  
 1993 ....903  
 1992 ....860  
 1991 ....791  
 1990 ....769  
 1989 ....727  
 1988 ....716  
 1987 ....706  
 1986 ....755  
 1985 ....759  
 1984 ....747  
 1983 ....798  
 1982 ....752  
 1981 ....699  
 1980 ....675  
 1979 ....607  
 1978 ....(unk.)  
 1977 ....(unk.)  
 1976 ....729  
 1975 ....834  
 1974 ....496  
 1973 ....388  
 1972 ....323  
 1971 ....270  
 1970 ....220  
 1969 ....198  
 1968 ....175  
 1967 ....162

**MOON VALLEY (PHOENIX)**  
**"Rockets"**

2005 ....1,674  
 2004 ....1,703  
 2003 ....1,669  
 2002 ....1,674  
 2001 ....1,706  
 2000 ....1,788  
 1999 ....1,788  
 1998 ....1,887

1997 ....1,852  
 1996 ....1,808  
 1995 ....1,872  
 1994 ....1,927  
 1993 ....1,975  
 1992 ....1,920  
 1991 ....1,974  
 1990 ....2,050  
 1989 ....2,251  
 1988 ....2,419  
 1987 ....2,556  
 1986 ....2,552  
 1985 ....2,515  
 1984 ....2,447  
 1983 ....2,457  
 1982 ....2,472  
 1981 ....2,414  
 1980 ....2,476  
 1979 ....2,367  
 1978 ....2,318  
 1977 ....2,113  
 1976 ....1,946  
 1975 ....2,048  
 1974 ....2,381  
 1973 ....2,568  
 1972 ....2,777  
 1971 ....2,245  
 1970 ....2,059  
 1969 ....1,458  
 1968 ....1,181  
 1967 .... 920  
 1966 .... 566

**MORENCI**  
**"Wildcats"**

2005 ....265  
 2004 ....277  
 2003 ....288  
 2002 ....311

2001 ....327  
 2000 ....337  
 1999 ....347  
 1998 ....381  
 1997 ....408  
 1996 ....381  
 1995 ....389  
 1994 ....354  
 1993 ....329  
 1992 ....293  
 1991 ....287  
 1990 ....261  
 1989 ....259  
 1988 ....241  
 1987 ....249  
 1986 ....247  
 1985 ....301  
 1984 ....385  
 1983 ....458  
 1982 ....447  
 1981 ....460  
 1980 ....450  
 1979 ....465  
 1978 ....494  
 1977 ....479  
 1976 ....509  
 1975 ....501  
 1974 ....506  
 1973 ....543  
 1972 ....560  
 1971 ....566  
 1970 ....568  
 1969 ....562  
 1968 ....577  
 1967 ....593  
 1966 ....562  
 1965 ....628  
 1964 ....595  
 1963 ....586



*Old Nogales High School*

1962 ...618  
 1961 ...584  
 1960 ...562  
 1959 ...540  
 1958 ...543  
 1957 ...549  
 1956 ...500  
 1955 ...487  
 1954 ...438  
 1953 ...337  
 1952 ...322  
 1951 ...303  
 1950 ...295  
 1949 ...288  
 1948 ...275  
 1947 ...250  
 1946 ...225  
 1945 ...210  
 1944 ...205  
 1943 ...219  
 1942 ...214  
 1941 ...184

**MOUNTAIN POINTE (PHOENIX)**  
**“Pride”**

2005 ...2,396  
 2004 ...2,282  
 2003 ...2,311  
 2002 ...2,461  
 2001 ...2,285  
 2000 ...2,339  
 1999 ...2,223  
 1998 ...2,378  
 1997 ...2,569  
 1996 ...2,669  
 1995 ...2,690  
 1994 ...2,446  
 1993 ...1,667  
 1992 ...1,024

**MOUNTAIN RIDGE (GLENDALE)**  
**“Mountain Lions”**

2005 ...2557  
 2004 ...2,752  
 2003 ...2,814  
 2002 ...2,964  
 2001 ...2,874  
 2000 ...2,711  
 1999 ...2,223  
 1998 ...2,133  
 1997 ...2,027

**MOUNTAIN VIEW (MARANA)**  
**“Mountain Lions”**

2005 ...2,234  
 2004 ...2,108  
 2003 ...2,067  
 2002 ...2,037  
 2001 ...1,991  
 2000 ...1,957  
 1999 ...1,897

1998 ...1,909  
 1997 ...1,798  
 1996 ...1,777  
 1995 ...1,766  
 1994 ...1,677  
 1993 ...1,529  
 1992 ...1,387  
 1991 ...1,261  
 1990 ...1,106  
 1989 ... 796  
 1988 ... 503  
 1987 ... 246

**MOUNTAIN VIEW (MESA)**

**“Toros”**

\*2005 ..3,657  
 \*2004 ..3,688  
 \*2003 ..3,741  
 \*2002 ..3,710  
 \*2001 ..3,807  
 \*2000 ..3,806  
 \*1999 ..2,223  
 \*1998 ..2,695  
 \*1997 ..3,962  
 \*1996 ..3,777  
 \*1995 ..3,729  
 \*1994 ..3,843  
 \*1993 ..3,913  
 \*1992 ..3,436  
 \*1991 ..3,240  
 \*1990 ..3,025  
 \*1989 ..3,242  
 \*1988 ..3,270  
 \*1987 ..4,317  
 \*1986 ..3,578  
 \*1985 ..3,280  
 \*1984 ..2,438  
 1983 ...2,340  
 1982 ...2,375

1981 ....2,380  
 1980 ....2,325  
 1979 ....2,173  
 1978 ....1,970  
 1977 ....1,517

**MUSIC MTN. (PEACH SPRINGS)**

**“Warriors”**

2005 ...45  
 2004 ...54  
 2003 ...69  
 2002 ...50  
 2001 ...79

**NOGALES**

**“Apaches”**

2005 ....1,757  
 2004 ....1,685  
 2003 ....1,679  
 2002 ....1,655  
 2001 ....1,677  
 2000 ....1,718  
 1999 ....1,692  
 1998 ....1,688  
 1997 ....1,791  
 1996 ....2,021  
 1995 ....2,103  
 1994 ....2,097  
 1993 ....2,021  
 1992 ....1,873  
 1991 ....1,933  
 1990 ....1,837  
 1989 ....1,747  
 1988 ....1,689  
 1987 ....1,562  
 1986 ....1,518  
 1985 ....1,409  
 1984 ....1,383  
 1983 ....1,411



**North Phoenix High School**



1982 ....1,393  
 1981 ....1,400  
 1980 ....1,415  
 1979 ....1,450  
 1978 ....1,460  
 1977 ....1,468  
 1976 ....1,470  
 1975 ....1,191  
 1974 ....1,137  
 1973 ....1,089  
 1972 ....1,064  
 1971 ....1,003  
 1970 ....1,001  
 1969 ....940  
 1968 ....808  
 1967 ....820  
 1966 ....806  
 1965 ....687  
 1964 ....635  
 1963 ....620  
 1962 ....509  
 1961 ....475  
 1960 ....429  
 1959 ....379  
 1958 ....344  
 1957 ....346  
 1956 ....350  
 1955 ....342  
 1954 ....335  
 1953 ....333  
 1952 ....330  
 1951 ....330  
 1950 ....320  
 1949 ....303  
 1948 ....278  
 1947 ....275  
 1946 ....231  
 1945 ....244  
 1944 ....234  
 1943 ....246  
 1942 ....252  
 1941 ....278  
 1940 ....283  
 1939 ....261  
 1938 ....252  
 1937 ....280  
 1936 ....344  
 1935 ....250  
 1934 ....208  
 1933 ....250  
 1932 ....230  
 1931 ....215  
 1930 ....200  
 1929 ....213  
 1928 ....226

**NORTH (PHOENIX)**  
**“Mustangs”**  
 2005 ....2,438  
 2004 ....2,402  
 2003 ....2,390

2002 ....2,438  
 2001 ....2,612  
 2000 ....2,630  
 1999 ....2,651  
 1998 ....2,711  
 1997 ....2,550  
 1996 ....2,325  
 1995 ....2,195  
 1994 ....2,093  
 1993 ....2,029  
 1992 ....2,117  
 1991 ....2,143  
 1990 ....1,987  
 1989 ....1,937  
 1988 ....2,193  
 1987 ....1,722  
 1986 ....1,546  
 1985 ....1,151  
 1984 ....875  
 1983 ....(closed)  
 1982 ....(closed)  
 1981 ....814  
 1980 ....1,139  
 1979 ....1,317  
 1978 ....1,555  
 1977 ....1,600  
 1976 ....1,779  
 1975 ....1,799  
 1974 ....1,784  
 1973 ....1,849  
 1972 ....2,048  
 1971 ....2,155  
 1970 ....2,211  
 1969 ....2,067  
 1968 ....2,141  
 1967 ....2,336  
 1966 ....2,363  
 1965 ....2,601

1964 ....2,678  
 1963 ....2,607  
 1962 ....2,553  
 1961 ....2,343  
 1960 ....2,314  
 1959 ....2,357  
 1958 ....2,419  
 1957 ....2,895  
 1956 ....2,677  
 1955 ....2,736  
 1954 ....2,614  
 1953 ....2,484  
 1952 ....2,738  
 1951 ....2,600  
 1950 ....2,451  
 1949 ....2,759  
 1948 ....2,501  
 1947 ....2,349  
 1946 ....2,251  
 1945 ....2,067  
 1944 ....1,962  
 1943 ....2,167  
 1942 ....2,058  
 1941 ....1,968  
 1940 ....1,517

**NORTH CANYON (PHOENIX)**  
**“Rattlers”**

2005 ....2,451  
 2004 ....2,391  
 2003 ....2,358  
 2002 ....2,540  
 2001 ....2,598  
 2000 ....2,922  
 1999 ....2,820  
 1998 ....2,616  
 1997 ....2,439  
 1996 ....2,330



*The Orme School*

1995 ....2,196  
1994 ....2,111  
1993 ....1,939

**NORTHLAND PREP (FLAGSTAFF)**

**“Spartans”**

2005 ....284  
2004 ....271  
2003 ....193  
2002 ....168  
2001 ....150  
2000 ....135  
1999 ....71  
1998 ....61  
1997 ....47

**NORTHWEST CHRISTIAN  
(PHOENIX)**

**“Crusaders”**

2005 ....335  
2004 ....326  
2003 ....330  
2002 ....317  
2001 ....304  
2000 ....297  
1999 ....281  
1998 ....255  
1997 ....261  
1996 ....228  
1995 ....169  
1994 ....146  
1993 ....127  
1992 ....112  
1991 ....129  
1990 ....138  
1989 ....173  
1988 ....171  
1987 ....151  
1986 ....148  
1985 ....92  
1984 ....71  
1983 ....28

**NOTRE DAME PREP  
(SCOTTSDALE)**

**“Saints”**

2005 ....660  
2004 ....463  
2003 ....249

**ORME SCHOOL (MAYER)**

**“Warriors”**

2005 ....127  
2004 ....116  
2003 ....137  
2002 ....173  
2001 ....165  
2000 ....157  
1999 ....171  
1998 ....165  
1997 ....143

1996 ....159  
1995 ....155  
1994 ....123  
1993 ....130  
1992 ....129  
1991 ....122  
1990 ....114  
1989 ....131  
1988 ....158  
1987 ....179  
1986 ....196  
1985 ....201  
1984 ....216  
1983 ....199  
1982 ....220  
1981 ....223  
1980 ....201  
1979 ....179  
1978 ....193  
1977 ....185  
1976 ....181  
1975 ....211  
1974 ....207  
1973 ....192  
1972 ....158  
1971 ....191  
1970 ....163  
1969 ....150  
1968 ....150  
1967 ....159  
1966 ....160  
1965 ....160  
1964 ....156  
1963 ....146  
1962 ....148  
1961 ....129  
1960 ....132

1959 ....116  
1958 ....106  
1957 ....100

**PAGE**

**“Sand Devils”**

2005 ....1,058  
2004 ....1,077  
2003 ....1,170  
2002 ....1,106  
2001 ....1,155  
2000 ....1,209  
1999 ....1,203  
1998 ....1,246  
1997 ....1,187  
1996 ....1,121  
1995 ....1,165  
1994 ....1,113  
1993 ....1,086  
1992 ....1,079  
1991 ....1,005  
1990 ....861  
1989 ....852  
1988 ....788  
1987 ....881  
1986 ....854  
1985 ....796  
1984 ....724  
1983 ....642  
1982 ....610  
1981 ....575  
1980 ....582  
1979 ....556  
1978 ....655  
1977 ....541  
1976 ....626  
1975 ....610



*Paradise Valley High School*



1974 ....490  
 1973 ....374  
 1972 ....247  
 1971 ....188  
 1970 ....156  
 1969 ....143  
 1968 ....150  
 1967 ....159  
 1966 ....159  
 1965 ....157  
 1964 ....333  
 1963 ....301  
 1962 ....301  
 1961 ....230  
 1960 ....150  
 1959 ....100  
 1958 ....26

**PALO VERDE (TUCSON)**  
**“Titans”**

2005 ....1,575  
 2004 ....1,581  
 2003 ....1,534  
 2002 ....1,595  
 2001 ....1,633  
 2000 ....1,608  
 1999 ....1,578  
 1998 ....1,575  
 1997 ....1,573  
 1996 ....1,420  
 1995 ....1,356  
 1994 ....1,415  
 1993 ....1,436  
 1992 ....1,394  
 1991 ....1,410  
 1990 ....1,469  
 1989 ....1,649  
 1988 ....1,575  
 1987 ....1,810  
 1986 ....1,680  
 1985 ....1,536  
 1984 ....1,585  
 1983 ....1,657  
 1982 ....1,715  
 1981 ....1,792  
 1980 ....1,891  
 1979 ....2,091  
 1978 ....2,109  
 1977 ....2,191  
 1976 ....2,500  
 1975 ....2,600  
 1974 ....2,632  
 1973 ....2,698  
 1972 ....2,628  
 1971 ....2,588  
 1970 ....3,011  
 1969 ....4,626  
 1968 ....3,849  
 1967 ....3,663  
 1966 ....3,850  
 1965 ....3,663

1964 ....3,441  
 1963 ....3,097

**PALO VERDE CHRISTIAN**  
**(TUCSON)**

**“Crusaders”**  
 1999 ....273  
 1998 ....315  
 1997 ....294  
 1996 ....253  
 1995 ....197  
 1994 ....120  
 1993 ....110  
 1992 ....115  
 1991 ....121  
 1990 ....98  
 1989 ....97  
 1988 ....100  
 1987 ....103  
 1986 ....95

**PARADISE VALLEY**  
**“Trojans”**

2005 ....1,926  
 2004 ....1,981  
 2003 ....2,027  
 2002 ....2,141  
 2001 ....2,276  
 2000 ....2,624  
 1999 ....2,502  
 1998 ....2,232  
 1997 ....2,003  
 1996 ....1,760  
 1995 ....1,619  
 1994 ....1,374  
 1993 ....1,206  
 1992 ....2,870  
 1991 ....2,678

1990 ....2,654  
 1989 ....2,640  
 1988 ....2,216  
 1987 ....2,435  
 1986 ....2,159  
 1985 ....1,742  
 1984 ....1,688  
 1983 ....1,585  
 1982 ....1,647  
 1981 ....1,919  
 1980 ....2,714  
 1979 ....2,519  
 1978 ....1,603  
 1977 ....1,638  
 1976 ....2,283  
 1975 ....2,859  
 1974 ....2,513  
 1973 ....2,111  
 1972 ....1,900  
 1971 ....1,563  
 1970 ....1,239  
 1969 ....1,060  
 1968 ....992  
 1967 ....938  
 1966 ....1,217  
 1965 ....913  
 1964 ....744  
 1963 ....921  
 1962 ....425  
 1961 ....(unk.)  
 1960 ....(unk.)

**PARKER “Broncos”**

2005 ....591  
 2004 ....574  
 2003 ....615  
 2002 ....686  
 2001 ....681



*Peoria High School*



2000 ....710  
1999 ....658  
1998 ....651  
1997 ....656  
1996 ....636  
1995 ....693  
1994 ....699  
1993 ....703  
1992 ....643  
1991 ....627  
1990 ....616  
1989 ....581  
1988 ....526  
1987 ....600  
1986 ....572  
1985 ....566  
1984 ....631  
1983 ....608  
1982 ....630  
1981 ....645  
1980 ....665  
1979 ....714  
1978 ....463  
1977 ....593  
1976 ....587  
1975 ....542  
1974 ....516  
1973 ....539  
1972 ....509  
1971 ....461  
1970 ....422  
1969 ....386  
1968 ....375  
1967 ....361  
1966 ....339  
1965 ....332  
1964 ....295  
1963 ....274  
1962 ....280  
1961 ....222  
1960 ....237  
1959 ....305  
1958 ....232  
1957 ....244  
1956 ....229  
1955 ....186  
1954 ....199  
1953 ....188  
1952 ....167  
1951 ....156  
1950 ....144  
1949 ....117  
1948 ....54  
1947 ....56  
1946 ....71  
1945 ....51  
1944 ....48  
1943 ....70  
1942 ....69  
1941 ....82  
1940 ....65

1939 ....46  
1938 ....49  
1937 ....50  
1936 ....43  
1935 ....31  
1934 ....35  
1933 ....32

**PATAGONIA**  
**"Lobos"**

2005 ....85  
2004 ....86  
2003 ....115  
2002 ....118  
2001 ....105  
2000 ....95  
1999 ....95  
1998 ....109  
1997 ....120  
1996 ....123  
1995 ....125  
1994 ....110  
1993 ....99  
1992 ....107  
1991 ....105  
1990 ....106  
1989 ....128  
1988 ....119  
1987 ....94  
1986 ....112  
1985 ....155  
1984 ....122  
1983 ....119  
1982 ....115  
1981 ....191  
1980 ....149  
1979 ....141  
1978 ....142

1977 ....144  
1976 ....150  
1975 ....148  
1974 ....143  
1973 ....131  
1972 ....112  
1971 ....108  
1970 ....92  
1969 ....96  
1968 ....112  
1967 ....111  
1966 ....104  
1965 ....(unk.)  
1964 ....(unk.)  
1963 ....102  
1962 ....71  
1961 ....89  
1960 ....71  
1959 ....73  
1958 ....(unk.)  
1957 ....(unk.)  
1956 ....(unk.)  
1955 ....77  
1954 ....81  
1953 ....87  
1952 ....63  
1951 ....61  
1950 ....56  
1949 ....52  
1948 ....53  
1947 ....(unk.)  
1946 ....(unk.)  
1945 ....(unk.)  
1944 ....(unk.)  
1943 ....(unk.)  
1942 ....56



**Phoenix Indian School**

**PAYSON  
"Longhorns"**

2005 ....954  
2004 ....964  
2003 ....968  
2002 ....958  
2001 ....933  
2000 ....980  
1999 ....942  
1998 ....868  
1997 ....857  
1996 ....775  
1995 ....749  
1994 ....718  
1993 ....644  
1992 ....638  
1991 ....559  
1990 ....575  
1989 ....570  
1988 ....585  
1987 ....602  
1986 ....546  
1985 ....548  
1984 ....496  
1983 ....470  
1982 ....452  
1981 ....460  
1980 ....436  
1979 ....416  
1978 ....(unk.)  
1977 ....(unk.)  
1976 ....386  
1975 ....307  
1974 ....275  
1973 ....255  
1972 ....210  
1971 ....170  
1970 ....185  
1969 ....190  
1968 ....194  
1967 ....185  
1966 ....(unk.)  
1965 ....(unk.)  
1964 ....147  
1963 ....118  
1962 ....93  
1961 ....90  
1960 ....81  
1959 ....72

**PEORIA "Panthers"**

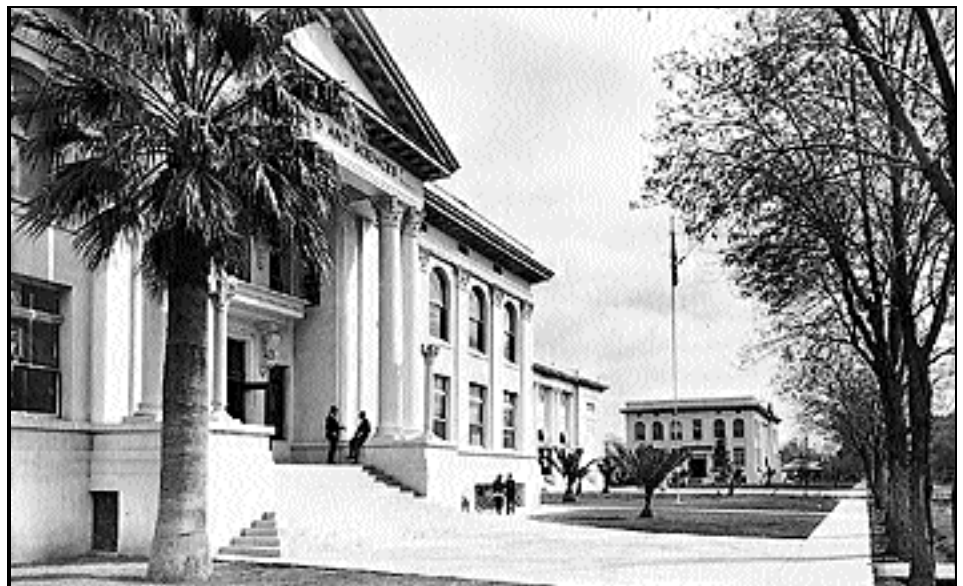
2005 ....2,483  
2004 ....2,754  
2003 ....2,644  
2002 ....2,530  
2001 ....2,379  
2000 ....2,180  
1999 ....2,194  
1998 ....2,075  
1997 ....1,875  
1996 ....1,839

1995 ....1,719  
1994 ....1,614  
1993 ....1,615  
1992 ....1,648  
1991 ....1,655  
1990 ....1,772  
1989 ....1,838  
1988 ....1,351  
1987 ....1,874  
1986 ....1,886  
1985 ....1,517  
1984 ....1,294  
1983 ....1,075  
1982 ....931  
1981 ....830  
1980 ....760  
1979 ....976  
1978 ....1,631  
1977 ....1,442  
1976 ....1,322  
1975 ....1,168  
1974 ....848  
1973 ....709  
1972 ....594  
1971 ....497  
1970 ....511  
1969 ....490  
1968 ....461  
1967 ....460  
1966 ....439  
1965 ....430  
1964 ....437  
1963 ....466  
1962 ....475  
1961 ....423  
1960 ....372  
1959 ....353  
1958 ....326  
1957 ....270

1956 ....300  
1955 ....(unk.)  
1954 ....193  
1953 ....202  
1952 ....192  
1951 ....232  
1950 ....191  
1949 ....175  
1948 ....166  
1947 ....149  
1946 ....122  
1945 ....114  
1944 ....116  
1943 ....130  
1942 ....113  
1941 ....136  
1940 ....137  
1939 ....145  
1938 ....157  
1937 ....146  
1936 ....151  
1935 ....140  
1934 ....147

**PHOENIX CHRISTIAN  
"Cougars"**

2005 ....374  
2004 ....406  
2003 ....435  
2002 ....444  
2001 ....434  
2000 ....458  
1999 ....436  
1998 ....423  
1997 ....383  
1996 ....335  
1995 ....303  
1994 ....249  
1993 ....212



*Phoenix Union High School*

1992 ....196  
 1991 ....220  
 1990 ....243  
 1989 ....260  
 1988 ....236  
 1987 ....403  
 1986 ....449  
 1985 ....439  
 1984 ....429  
 1983 ....432  
 1982 ....443  
 1981 ....449  
 1980 ....438  
 1979 ....449  
 1978 ....450  
 1977 ....454  
 1976 ....449  
 1975 ....446  
 1974 ....403  
 1973 ....395  
 1972 ....399  
 1971 ....378  
 1970 ....365  
 1969 ....330  
 1968 ....326  
 1967 ....290  
 1966 ....278  
 1965 ....285  
 1964 ....270  
 1963 ....314  
 1962 ....352  
 1961 ....342  
 1960 ....326  
 1959 ....266  
 1958 ....257  
 1957 ....283  
 1956 ....255  
 1955 ....177  
 1954 ....144  
 1953 ....139  
 1952 ....128

**PHOENIX COUNTRY DAY SCHOOL  
 "Eagles"**

2005 ....259  
 2004 ....258  
 2003 ....258  
 2002 ....239  
 2001 ....244  
 2000 ....238  
 1999 ....231  
 1998 ....220  
 1997 ....224  
 1996 ....211  
 1995 ....218  
 1994 ....183  
 1993 ....165  
 1992 ....168  
 1991 ....155  
 1990 ....155  
 1989 ....165

1988 ....179  
 1987 ....190  
 1986 ....174  
 1985 ....152  
 1984 ....145  
 1983 ....132  
 1982 ....117  
 1981 ....132  
 1980 ....141  
 1979 ....133  
 1978 ....178  
 1977 ....130  
 1976 ....125  
 1975 ....121  
 1974 ....118  
 1973 ....122  
 1972 ....118  
 1971 ....116  
 1970 ....115  
 1969 ....110  
 1968 ....100  
 1967 ....101  
 1966 ....94  
 1965 ....81  
 1964 ....51  
 1963 ....22  
 1962 ....12

**PHOENIX INDIAN SCHOOL  
 "Braves"**

1989 ....80  
 1988 ....(unk.)  
 1987 ....370  
 1986 ....522  
 1985 ....638  
 1984 ....(unk.)  
 1983 ....565  
 1982 ....535  
 1981 ....555

1980 ....552  
 1979 ....646  
 1978 ....(unk.)  
 1977 ....(unk.)  
 1976 ....544  
 1975 ....614  
 1974 ....587  
 1973 ....733  
 1972 ....746  
 1971 ....883  
 1970 ....862  
 1969 ....892  
 1968 ....889  
 1967 ....885

**PHOENIX SCHOOL FOR THE DEAF  
 "Roadrunners"**

2005 ....49  
 2004 ....49  
 2003 ....79  
 2002 ....66  
 2001 ....79  
 2000 ....79  
 1999 ....94  
 1998 ....75  
 1997 ....77  
 1996 ....67  
 1995 ....51  
 1994 ....54  
 1993 ....51  
 1992 ....63  
 1991 ....70  
 1990 ....74  
 1989 ....65  
 1988 ....(unk.)  
 1987 ....75  
 1986 ....75  
 1985 ....81  
 1984 ....70



*Pima High School*



1983 ....(unk.)  
1982 ....54  
1981 ....42

**PHOENIX TECH  
“Hornets”**

1955 ....1,940  
1954 ....1,960  
1953 ....1,889  
1952 ....1,772  
1951 ....1,807  
1950 ....1,744  
1949 ....1,130  
1948 ....1,729  
1947 ....1,941  
1946 .... 826  
1945 .... 331  
1944 .... 346  
1943 .... 648  
1942 .... 703  
1941 .... 739  
1940 .... 597  
1939 .... 593  
1938 .... 720

**PHOENIX UNION  
“Coyotes”**

1982 ....1,274  
1981 ....1,129  
1980 ....1,232  
1979 ....1,148  
1978 ....1,283  
1977 ....1,168  
1976 ....1,363  
1975 ....1,817  
1974 ....1,861  
1973 ....2,236  
1972 ....2,551  
1971 ....2,913  
1970 ....3,569  
1969 ....3,983  
1968 ....4,536  
1967 ....4,636  
1966 ....4,810  
1965 ....5,941  
1964 ....6,320  
1963 ....6,176  
1962 ....5,898  
1961 ....5,543  
1960 ....5,176  
1959 ....5,266  
1958 ....5,156  
1957 ....5,837  
1956 ....5,819  
1955 ....3,973  
1954 ....3,656  
1953 ....3,949  
1952 ....3,383  
1951 ....3,011  
1950 ....3,317  
1949 ....4,353

1948 ....4,474  
1947 ....4,329  
1946 ....4,529  
1945 ....3,903  
1944 ....3,378  
1943 ....3,416  
1942 ....3,558  
1941 ....3,683  
1940 ....3,897  
1939 ....5,219  
1938 ....5,080  
1937 ....4,918  
1936 ....5,005  
1935 ....4,505  
1934 ....4,259  
1933 ....4,004  
1932 ....4,070  
1931 ....3,812  
1930 ....4,000  
1929 ....3,650  
1928 ....3,200  
1927 ....2,850  
1926 ....1,896  
1925 ....2,500  
1924 ....(unk.)  
1923 ....1,472  
1922 ....1,491  
1921 ....1,279  
1920 ....1,107  
1919 .... 803  
1918 .... 854  
1917 .... 770  
1916 .... 717  
1915 .... 605  
1914 .... 750  
1913 .... 469  
1912 .... 388  
1911 .... 241

**PIMA “Roughriders”**

2005 ....191  
2004 ....180  
2003 ....194  
2002 ....222  
2001 ....192  
2000 ....194  
1999 ....212  
1998 ....221  
1997 ....226  
1996 ....210  
1995 ....230  
1994 ....223  
1993 ....211  
1992 ....206  
1991 ....194  
1990 ....187  
1989 ....190  
1988 ....188  
1987 ....200  
1986 ....194  
1985 ....181  
1984 ....173  
1983 ....173  
1982 ....151  
1981 ....142  
1980 ....150  
1979 ....148  
1978 ....151  
1977 ....156  
1976 ....145  
1975 ....148  
1974 ....128  
1973 ....137  
1972 ....141  
1971 ....147  
1970 ....136



*Old Prescott High School*

1969 ....130  
1968 ....96  
1967 ....103

**PINE "Buffaloes"**

1938 ....12  
1937 ....(unk.)  
1936 ....(unk.)  
1935 ....(unk.)  
1934 ....(unk.)  
1933 ....(unk.)  
1932 ....(unk.)  
1931 ....(unk.)  
1930 ....(unk.)  
1929 ....(unk.)

**PINNACLE (PHOENIX)**

**"Pioneers"**

2005 ....1,887  
2004 ....1,864  
2003 ....1,716  
2002 ....1,754  
2001 ....1,353

**PINON "Eagles"**

2005 ....431  
2004 ....442  
2003 ....471  
2002 ....478  
2001 ....435  
1999 ....401  
1998 ....363  
1997 ....680  
1996 ....640

**PRECISION (PHOENIX)**

**"Panthers"**

2005 ....475  
2004 ....439  
2003 ....349  
2002 ....251

**PRESCOTT "Badgers"**

2005 ....1,821  
2004 ....1,772  
2003 ....1,702  
2002 ....1,591  
2001 ....1,623  
2000 ....1,698  
1999 ....1,711  
1998 ....1,733  
1997 ....1,687  
1996 ....1,661  
1995 ....1,784  
1994 ....1,690  
1993 ....1,615  
1992 ....1,440  
1991 ....1,478  
1990 ....1,562  
1989 ....1,758  
1988 ....1,800

1987 ....1,883  
1986 ....1,864  
1985 ....1,790  
1984 ....1,736  
1983 ....1,739  
1982 ....1,783  
1981 ....1,857  
1980 ....1,920  
1979 ....1,963  
1978 ....1,664  
1977 ....1,502  
1976 ....1,453  
1975 ....1,829  
1974 ....1,876  
1973 ....1,748  
1972 ....1,670

1971 ....1,602  
1970 ....1,526  
1969 ....1,443  
1968 ....1,452  
1967 ....1,343  
1966 ....1,237  
1965 ....1,199  
1964 ....1,271  
1963 ....1,117  
1962 ....1,069  
1961 ....1,127  
1960 ....967 (3)  
1959 ....876 (3)  
1958 ....621 (3)  
1957 ....616 (3)  
1956 ....591 (3)  
1955 ....528 (3)  
1954 ....479 (3)  
1953 ....474 (3)  
1952 ....451 (3)  
1951 ....472 (3)  
1950 ....465 (3)  
1949 ....463 (3)  
1948 ....420 (3)  
1947 ....406 (3)  
1946 ....336 (3)  
1945 ....316 (3)  
1944 ....270 (3)  
1943 ....327 (3)  
1942 ....379 (3)  
1941 ....413 (3)  
1940 ....407 (3)  
1939 ....564  
1938 ....529  
1937 ....457  
1936 ....376  
1935 ....651 (6)  
1934 ....624 (6)  
1933 ....606 (6)  
1932 ....655 (6)  
1931 ....612 (6)  
1930 ....276  
1929 ....277  
1928 ....250  
1927 ....235

1926 ....232  
1925 ....190  
1924 ....188  
1923 ....204  
1922 ....174  
1921 ....152  
1920 ....134  
1919 ....118  
1918 ....120  
1917 ....118  
1916 ....115  
1915 ....80  
1914 ....82  
1913 ....96  
1912 ....82  
1911 ....67

**PUEBLO (TUCSON)**

**"Warriors"**

2005 ....1,887  
2004 ....1,976  
2003 ....1,889  
2002 ....1,914  
2001 ....1,765  
2000 ....1,795  
1999 ....1,817  
1998 ....1,832  
1997 ....2,118  
1996 ....1,999  
1995 ....1,939  
1994 ....1,891  
1993 ....1,954  
1992 ....1,946  
1991 ....1,968  
1990 ....1,985  
1989 ....1,901  
1988 ....1,890  
1987 ....1,793  
1986 ....1,795  
1985 ....1,782  
1984 ....1,787  
1983 ....1,815  
1982 ....1,857  
1981 ....1,768  
1980 ....1,828  
1979 ....2,020  
1978 ....1,858  
1977 ....1,960  
1976 ....2,045  
1975 ....2,050  
1974 ....1,978  
1973 ....2,005  
1972 ....1,915  
1971 ....2,150  
1970 ....2,674  
1969 ....2,597  
1968 ....2,552  
1967 ....2,603  
1966 ....2,554  
1965 ....2,600  
1964 ....2,448

1963 ....2,407  
 1962 ....2,209  
 1961 ....1,929  
 1960 ....1,767  
 1959 ....1,684  
 1958 ....1,535  
 1957 ....1,457  
 1956 ....1,302

**PUSCH RIDGE (TUCSON)**

**“Lions”**

2005 ....259  
 2004 ....240  
 2003 ....246  
 2002 ....223  
 2001 ....229  
 2000 ....264

**QUEEN CREEK**

**“Bulldogs”**

2005 ....991  
 2004 ....805  
 2003 ....655  
 2002 ....537  
 2001 ....511  
 1999 ....400  
 1998 ....400  
 1997 ....383  
 1996 ....387  
 1995 ....358  
 1994 ....302  
 1993 ....266  
 1992 ....267  
 1991 ....246  
 1990 ....261  
 1989 ....260  
 1988 ....171  
 1987 ....163  
 1986 ....(unk.)

**RAYMOND KELLIS (GLENDALE)**

**“Cougars”**

2005 ....448 (1)

**RAY (KEARNY)**

**“Bearcats”**

2005 ....214  
 2004 ....211  
 2003 ....211  
 2002 ....223  
 2001 ....215  
 2000 ....247  
 1999 ....290  
 1998 ....306  
 1997 ....329  
 1996 ....320  
 1995 ....335  
 1994 ....353  
 1993 ....365  
 1992 ....389  
 1991 ....367

1990 ....365  
 1989 ....378  
 1988 ....(unk.)  
 1987 ....357  
 1986 ....369  
 1985 ....368  
 1984 ....395  
 1983 ....395  
 1982 ....396  
 1981 ....421  
 1980 ....448  
 1979 ....462  
 1978 ....(unk.)  
 1977 ....(unk.)  
 1976 ....485  
 1975 ....494  
 1974 ....487  
 1973 ....467  
 1972 ....498  
 1971 ....483  
 1970 ....464  
 1969 ....436  
 1968 ....400  
 1967 ....371

**RED MESA (TEEC NOS POS)**

**“Redskins”**

2005 ....301  
 2004 ....294  
 2003 ....293  
 2002 ....285  
 2001 ....302  
 2000 ....267  
 1999 ....255  
 1998 ....244  
 1997 ....246  
 1996 ....262

1995 ....285  
 1994 ....284  
 1993 ....276  
 1992 ....283  
 1991 ....282  
 1990 ....347  
 1989 ....402  
 1988 ....387  
 1987 ....378  
 1986 ....366  
 1985 ....338  
 1984 ....355  
 1983 ....342  
 1982 ....340  
 1981 ....341  
 1980 ....337  
 1979 ....336  
 1978 ....(unk.)  
 1977 ....(unk.)  
 1976 ....359

**RED MOUNTAIN (MESA)**

**“Mountain Lions”**

\*2005 ..3,527  
 \*2004 ..3,253  
 \*2003 ..3,216  
 \*2002 ..3,125  
 \*2001 ..3,104  
 \*2000 ..2,379  
 \*1999 ..3,023  
 \*1998 ..3,665  
 \*1997 ..3,520  
 \*1996 ..3,097  
 \*1995 ..3,004  
 \*1994 ..2,762  
 \*1993 ..2,554  
 \*1992 ..2,524



**Round Valley High School Dome.**



\*1991 ..2,436  
\*1990 ..2,175  
\*1989 ..1,913

**RINCON (TUCSON)  
"Rangers"**

2005 ....1,856  
2004 ....1,857  
2003 ....1,863  
2002 ....1,887  
2001 ....1,885  
2000 ....2,024  
1999 ....1,988  
1998 ....1,988  
1997 ....1,884  
1996 ....1,908  
1995 ....1,884  
1994 ....1,883  
1993 ....1,899  
1992 ....1,939  
1991 ....1,920  
1990 ....1,268  
1989 ....1,177  
1988 ....1,224  
1987 ....1,960  
1986 ....1,883  
1985 ....1,456  
1984 ....1,485  
1983 ....1,567  
1982 ....1,877  
1981 ....1,850  
1980 ....1,736  
1979 ....1,934  
1978 ....1,939  
1977 ....2,000  
1976 ....2,262  
1975 ....2,537  
1974 ....2,654  
1973 ....2,650  
1972 ....2,755  
1971 ....2,735  
1970 ....2,723  
1969 ....2,726  
1968 ....2,598  
1967 ....2,598  
1966 ....2,598  
1965 ....2,591  
1964 ....2,509  
1963 ....2,410  
1962 ....2,546  
1961 ....3,456  
1960 ....2,901  
1959 ....2,475

**RIO RICO "Hawks"**

2005 ....996  
2004 ....847  
2003 ....809  
2002 ....717  
2001 ....633  
2000 ....627

1999 ....573  
1998 ....545  
1997 ....642  
1996 ....695

**RIVER VALLEY (MOHAVE VALLEY)  
"Dust Devils"**

2005 ....799  
2004 ....744  
2003 ....745  
2002 ....756  
2001 ....792  
2000 ....716  
1999 ....720  
1998 ....723  
1997 ....653  
1996 ....659  
1995 ....568  
1994 ....510  
1993 ....470  
1992 ....398

**ROUGH ROCK (CHINLE)**

**"Sun Devils"**

2005 ....297  
2004 ....251  
2003 ....267  
2002 ....238  
2001 ....239  
2000 ....251  
1999 ....234  
1998 ....209  
1997 ....204  
1996 ....343  
1995 ....338  
1994 ....323  
1993 ....267  
1992 ....181  
1991 ....145

1990 ....132  
1989 ....117  
1988 ....191  
1987 ....116  
1986 ....108  
1985 ....95  
1984 ....102  
1983 ....135  
1982 ....131  
1981 ....120  
1980 ....127  
1979 ....134

**ROUND VALLEY (SPRINGERVILLE)  
"Elks"**

2005 ....510  
2004 ....521  
2003 ....550  
2002 ....544  
2001 ....512  
2000 ....566  
1999 ....550  
1998 ....625  
1997 ....587  
1996 ....599  
1995 ....593  
1994 ....598  
1993 ....558  
1992 ....501  
1991 ....503  
1990 ....468  
1989 ....520  
1988 ....496  
1987 ....489  
1986 ....470  
1985 ....476  
1984 ....482  
1983 ....477  
1982 ....446



*Original Safford High School*

1981 ....425  
 1980 ....443  
 1979 ....450  
 1978 ....372  
 1977 ....300  
 1976 ....371  
 1975 ....346  
 1974 ....327  
 1973 ....338  
 1972 ....296  
 1971 ....283  
 1970 ....271  
 1969 ....223  
 1968 ....222  
 1967 ....218  
 1966 ....202  
 1965 ....169  
 1964 ....161  
 1963 ....174  
 1962 ....172  
 1961 ....169  
 1960 ....143  
 1959 ....140  
 1958 ....148  
 1957 ....139  
 1956 ....140  
 1955 ....149  
 1954 ....162  
 1953 ....153  
 1952 ....115  
 1951 ....111  
 1950 ....107  
 1949 ....110  
 1948 ....102  
 1947 ....105  
 1946 ....109  
 1945 ....116  
 1944 ....128  
 1943 ....131  
 1942 ....125  
 1941 ....122  
 1940 ....120  
 1939 ....131

**SABINO (TUCSON)**

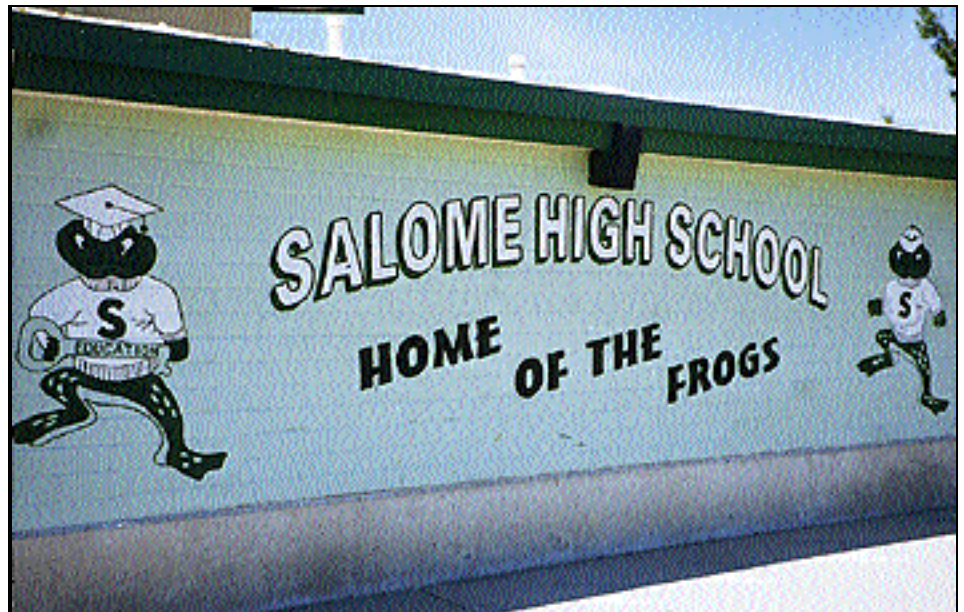
**“Sabercats”**  
 2005 ....1,708  
 2004 ....1,756  
 2003 ....1,727  
 2002 ....1,971  
 2001 ....2,151  
 2000 ....2,233  
 1999 ....2,102  
 1998 ....2,011  
 1997 ....1,856  
 1996 ....1,629  
 1995 ....1,717  
 1994 ....1,513  
 1993 ....1,504  
 1992 ....1,307  
 1991 ....1,315

1990 ....1,328  
 1989 ....1,512  
 1988 ....1,392  
 1987 ....1,857  
 1986 ....1,816  
 1985 ....1,840  
 1984 ....1,860  
 1983 ....1,835  
 1982 ....1,699  
 1981 ....1,999  
 1980 ....2,054  
 1979 ....1,979  
 1978 ....1,982  
 1977 ....1,705  
 1976 ....1,615  
 1975 ....1,456  
 1974 ....1,038  
 1973 ....533

**SAFFORD “Bulldogs”**

2005 ....790  
 2004 ....796  
 2003 ....751  
 2002 ....779  
 2001 ....788  
 2000 ....842  
 1999 ....869  
 1998 ....918  
 1997 ....910  
 1996 ....897  
 1995 ....884  
 1994 ....853  
 1993 ....859  
 1992 ....801  
 1991 ....763  
 1990 ....772  
 1989 ....758  
 1988 ....786  
 1987 ....755

1986 ....739  
 1985 ....727  
 1984 ....748  
 1983 ....772  
 1982 ....777  
 1981 ....847  
 1980 ....892  
 1979 ....885  
 1978 ....895  
 1977 ....903  
 1976 ....892  
 1975 ....830  
 1974 ....857  
 1973 ....845  
 1972 ....834  
 1971 ....804  
 1970 ....791  
 1969 ....768  
 1968 ....751  
 1967 ....750  
 1966 ....711  
 1965 ....652  
 1964 ....610  
 1963 ....564  
 1962 ....490  
 1961 ....500  
 1960 ....483  
 1959 ....465  
 1958 ....479  
 1957 ....440  
 1956 ....393  
 1955 ....392  
 1954 ....384  
 1953 ....366  
 1952 ....381  
 1951 ....380  
 1950 ....371  
 1949 ....355  
 1948 ....340



*Salome High School*



1947 ....335  
 1946 ....315  
 1945 ....303  
 1944 ....298  
 1943 ....263  
 1942 ....273  
 1941 ....286  
 1940 ....350  
 1939 ....340  
 1938 ....328  
 1937 ....296  
 1936 ....250  
 1935 ....240  
 1934 ....270  
 1933 ....265  
 1932 ....270  
 1931 ....257  
 1930 ....240  
 1929 ....222  
 1928 ....200  
 1927 ....188  
 1926 ....170  
 1925 ....160  
 1924 ....165  
 1923 ....130  
 1922 ....112  
 1921 ....110  
 1920 ....110  
 1919 ....77  
 1918 ....74  
 1917 ....68  
 1916 ....61  
 1915 ....34  
 1914 ....(unk.)

**SAGUARO (SCOTTSDALE)**  
**"Sabercats"**

2005 ....1,717  
 2004 ....1,683  
 2003 ....1,658  
 2002 ....1,580  
 2001 ....1,567  
 2000 ....1,490  
 1999 ....1,333  
 1998 ....1,302  
 1997 ....1,426  
 1996 ....1,702  
 1995 ....1,652  
 1994 ....2,261  
 1993 ....2,106  
 1992 ....2,107  
 1991 ....2,085  
 1990 ....2,128  
 1989 ....2,236  
 1988 ....2,243  
 1987 ....2,508  
 1986 ....2,478  
 1985 ....2,283  
 1984 ....2,504  
 1983 ....1,957  
 1982 ....2,071

1981 ....2,144  
 1980 ....2,345  
 1979 ....2,511  
 1978 ....2,411  
 1977 ....2,414  
 1976 ....2,310  
 1975 ....2,285  
 1974 ....2,261  
 1973 ....2,479  
 1972 ....3,077  
 1971 ....2,838  
 1970 ....2,601  
 1969 ....2,304  
 1968 ....1,986  
 1967 ....1,473

**SAHUARITA**  
**"Mustangs"**

2005 ....942  
 2004 ....838  
 2003 ....766  
 2002 ....743  
 2001 ....767  
 2000 ....784  
 1999 ....729  
 1998 ....698  
 1997 ....706  
 1996 ....766  
 1995 ....802  
 1994 ....835  
 1993 ....713  
 1992 ....650  
 1991 ....621  
 1990 ....592  
 1989 ....646  
 1988 ....630  
 1987 ....621  
 1986 ....614  
 1985 ....598

1984 ....619  
 1983 ....669  
 1982 ....708  
 1981 ....714  
 1980 ....702  
 1979 ....664  
 1978 ....586  
 1977 ....588  
 1976 ....648  
 1975 ....493  
 1974 ....451  
 1973 ....396  
 1972 ....326  
 1971 ....285  
 1970 ....245  
 1969 ....203  
 1968 ....144  
 1967 ....137

**SAHUARO (TUCSON)**  
**"Cougars"**

2005 ....1,896  
 2004 ....2,003  
 2003 ....2,083  
 2002 ....1,981  
 2001 ....1,938  
 2000 ....1,937  
 1999 ....1,807  
 1998 ....1,843  
 1997 ....1,840  
 1996 ....1,785  
 1995 ....1,787  
 1994 ....1,712  
 1993 ....1,760  
 1992 ....1,813  
 1991 ....1,791  
 1990 ....1,760  
 1989 ....2,048  
 1988 ....2,039



*Santa Cruz Union High School*



1987 ....2,192  
 1986 ....2,253  
 1985 ....2,283  
 1984 ....2,272  
 1983 ....2,312  
 1982 ....2,290  
 1981 ....2,307  
 1980 ....2,409  
 1979 ....2,496  
 1978 ....2,501  
 1977 ....2,460  
 1976 ....2,450  
 1975 ....2,644  
 1974 ....2,640  
 1973 ....2,942  
 1972 ....2,604  
 1971 ....2,387  
 1970 ....2,376  
 1969 ....1,786

**SALOME**  
**"Frogs"**

2005 ....144  
 2004 ....154  
 2003 ....144  
 2002 ....145  
 2001 ....150  
 2000 ....156  
 1999 ....162  
 1998 ....203  
 1997 ....192  
 1996 ....205  
 1995 ....178  
 1994 ....149  
 1993 ....175  
 1992 ....155  
 1991 ....144  
 1990 ....123  
 1989 ....137  
 1988 ....133  
 1987 ....132  
 1986 ....135  
 1985 ....130  
 1984 ....123  
 1983 ....133  
 1982 ....138  
 1981 ....129  
 1980 ....111  
 1979 ....87  
 1978 ....131  
 1977 ....98  
 1976 ....111  
 1975 ....106  
 1974 ....109  
 1973 ....104  
 1972 ....91  
 1971 ....81  
 1970 ....76  
 1969 ....82  
 1968 ....71  
 1967 ....76

1966 ....77  
 1965 ....64  
 1964 ....86  
 1963 ....77  
 1962 ....63  
 1961 ....55  
 1960 ....50  
 1959 ....49  
 1958 ....41  
 1957 ....41  
 1956 ....49

**SALPOINTE (TUCSON)**  
**"Lancers"**

2005 ....1,275  
 2004 ....1,315  
 2003 ....1,306  
 2002 ....1,351  
 2001 ....1,402  
 2000 ....1,434  
 1999 ....1,449  
 1998 ....1,410  
 1997 ....1,392  
 1996 ....1,386  
 1995 ....1,388  
 1994 ....1,367  
 1993 ....1,341  
 1992 ....1,313  
 1991 ....1,286  
 1990 ....1,220  
 1989 ....1,173  
 1988 ....1,128  
 1987 ....1,139  
 1986 ....1,234  
 1985 ....1,207  
 1984 ....1,129  
 1983 ....1,116  
 1982 ....1,061

1981 ....956  
 1980 ....930  
 1979 ....839  
 1978 ....826  
 1977 ....815  
 1976 ....850  
 1975 ....837  
 1974 ....952  
 1973 ....1,010  
 1972 ....1,041  
 1971 ....1,158  
 1970 ....1,129  
 1969 ....1,060  
 1968 ....1,131  
 1967 ....1,114  
 1966 ....1,056  
 1965 ....1,073  
 1964 ....1,099  
 1963 ....1,044  
 1962 ....1,046  
 1961 ....937  
 1960 ....848  
 1959 ....776  
 1958 ....811  
 1957 ....678  
 1956 ....563  
 1955 ....436  
 1954 ....453  
 1953 ....415  
 1952 ....265  
 1951 ....170

**SALT RIVER (SCOTTSDALE)**  
**"Eagles"**

2005 ....183  
 2004 ....150



*Old Scottsdale High School*

**SAN CARLOS****"Braves"**

2005 ...374  
 2004 ...347  
 2003 ...346  
 2002 ...357  
 2001 ...377  
 2000 ...332  
 1999 ...349  
 1998 ...314  
 1997 ...305  
 1996 ...320  
 1995 ...325  
 1994 ...274  
 1993 ...269  
 1992 ...201

**SANDRA DAY O'CONNOR****(GLENDALE)****"Eagles"**

2005 ...2,086  
 2004 ...1,675 (3)  
 2003 ...850 (2)

**SAN LUIS (YUMA)****"Sidewinders"**

2005 ...1,850  
 2004 ...1,335  
 2003 ...827

**SAN MANUEL****"Miners"**

2005 ...375  
 2004 ...393  
 2003 ...400  
 2002 ...422  
 2001 ...446  
 2000 ...522  
 1999 ...549  
 1998 ...578  
 1997 ...650  
 1996 ...610  
 1995 ...598  
 1994 ...578  
 1993 ...593  
 1992 ...585  
 1991 ...644  
 1990 ...686  
 1989 ...695  
 1988 ...691  
 1987 ...663  
 1986 ...622  
 1985 ...579  
 1984 ...646  
 1983 ...659  
 1982 ...686  
 1981 ...718  
 1980 ...803  
 1979 ...854  
 1978 ...816  
 1977 ...881

1976 ...918

1975 ...839

1974 ...873

1973 ...811

1972 ...738

1971 ...717

1970 ...702

1969 ...601

1968 ...647

1967 ...629

1966 ...556

1965 ...533

1964 ...469

1963 ...452

1962 ...406

1961 ...417

1960 ...432

1959 ...450

1958 ...395

1957 ...326

1956 ...220

1955 ...131

**SAN SIMON****"Longhorns"**

2005 ...35  
 2004 ...38  
 2003 ...42  
 2002 ...36  
 2001 ...37  
 2000 ...33  
 1999 ...40  
 1998 ...36  
 1997 ...43  
 1996 ...35  
 1995 ...32  
 1994 ...39  
 1993 ...34

1992 ...28

1991 ...30

1990 ...36

1989 ...35

1988 ...33

1987 ...32

1986 ...34

1985 ...38

1984 ...35

1983 ...44

1982 ...53

1981 ...67

1980 ...70

1979 ...76

1978 ...72

1977 ...66

1976 ...55

1975 ...50

1974 ...42

1973 ...40

1972 ...44

1971 ...43

1970 ...34

1969 ...30

1968 ...47

1967 ...45

**SANTA CRUZ (ELOY)****"Dust Devils"**

2005 ...555  
 2004 ...534  
 2003 ...552  
 2002 ...511  
 2001 ...518  
 2000 ...540  
 1999 ...574  
 1998 ...562  
 1997 ...549

**Sedona Red Rock High School**

1996 ....492  
 1995 ....513  
 1994 ....504  
 1993 ....515  
 1992 ....504  
 1991 ....487  
 1990 ....468  
 1989 ....448  
 1988 ....357  
 1987 ....444  
 1986 ....469  
 1985 ....470  
 1984 ....497  
 1983 ....506  
 1982 ....576  
 1981 ....550  
 1980 ....567  
 1979 ....584  
 1978 ....578  
 1977 ....519  
 1976 ....565  
 1975 ....523  
 1974 ....552  
 1973 ....523  
 1972 ....498  
 1971 ....501  
 1970 ....500  
 1969 ....520  
 1968 ....473  
 1967 ....458  
 1966 ....454  
 1965 ....450  
 1964 ....412  
 1963 ....378  
 1962 ....375  
 1961 ....369  
 1960 ....359  
 1959 ....392  
 1958 ....344  
 1957 ....319  
 1956 ....295  
 1955 ....295  
 1954 ....242  
 1953 ....302  
 1952 ....206  
 1951 ....200  
 1950 ....174  
 1949 ....125  
 1948 ....38 (fr)

**SANTA RITA (TUCSON)  
 "Eagles"**

2005 ....1,252  
 2004 ....1,287  
 2003 ....1,343  
 2002 ....1,497  
 2001 ....1,602  
 2000 ....1,545  
 1999 ....1,548  
 1998 ....1,560  
 1997 ....1,722

1996 ....1,722  
 1995 ....1,719  
 1994 ....1,712  
 1993 ....1,672  
 1992 ....1,709  
 1991 ....1,714  
 1990 ....1,902  
 1989 ....2,007  
 1988 ....2,012  
 1987 ....2,121  
 1986 ....2,125  
 1985 ....1,990  
 1984 ....1,969  
 1983 ....2,016  
 1982 ....2,242  
 1981 ....2,488  
 1980 ....2,614  
 1979 ....2,602  
 1978 ....2,628  
 1977 ....2,624  
 1976 ....2,591  
 1975 ....2,400  
 1974 ....2,022  
 1973 ....1,544  
 1972 ....1,029  
 1971 ....603  
 1970 ....(unk.)

**SCOTTSDALE  
 "Beavers"**

1983 ....1,289  
 1982 ....1,478  
 1981 ....1,500  
 1980 ....1,704  
 1979 ....1,783  
 1978 ....1,743  
 1977 ....1,856  
 1976 ....1,856  
 1975 ....1,907

1974 ....1,951  
 1973 ....1,990  
 1972 ....1,901  
 1971 ....1,862  
 1970 ....1,706  
 1969 ....1,627  
 1968 ....1,493  
 1967 ....1,483  
 1966 ....2,401  
 1965 ....2,184  
 1964 ....1,871  
 1963 ....1,625  
 1962 ....1,406  
 1961 ....2,154  
 1960 ....1,756  
 1959 ....1,805  
 1958 ....1,402  
 1957 ....1,095  
 1956 ....702  
 1955 ....577  
 1954 ....430  
 1953 ....323  
 1952 ....292  
 1951 ....216  
 1950 ....233  
 1949 ....200  
 1948 ....195  
 1947 ....170  
 1946 ....143  
 1945 ....137  
 1944 ....102  
 1943 ....102  
 1942 ....122  
 1941 ....139  
 1940 ....132  
 1939 ....149  
 1938 ....126  
 1937 ....129  
 1936 ....126



*Skyline High School*



1935 ....122  
1934 ....116  
1933 ....115  
1932 ....106  
1931 ....84  
1930 ....79  
1929 ....75  
1928 ....86  
1927 ....56  
1926 ....50  
1925 ....53  
1924 ....38  
1923 ....3 (fr)

**SCOTTSDALE CHRISTIAN  
"Eagles"**

2005 ....367  
2004 ....361  
2003 ....309  
2002 ....265  
2001 ....227  
2000 ....246  
1999 ....218  
1998 ....214  
1997 ....383  
1996 ....202  
1995 ....178  
1994 ....164  
1993 ....148  
1992 ....143  
1991 ....117  
1990 ....129  
1989 ....165  
1988 ....175  
1987 ....163  
1986 ....205  
1985 ....206  
1984 ....192  
1983 ....178  
1982 ....149  
1981 ....149  
1980 ....148  
1979 ....112  
1978 ....134  
1977 ....94  
1976 ....79  
1975 ....68  
1974 ....58  
1973 ....59

**SEDONA RED ROCK  
"Scorpions"**

2005 ....483  
2004 ....457  
2003 ....517  
2002 ....446  
2001 ....443  
2000 ....441  
1999 ....424  
1998 ....405  
1997 ....428

1996 ....294  
1995 ....242

**SELIGMAN  
"Antelopes"**

2005 ....58  
2004 ....64  
2003 ....65  
2002 ....56  
2001 ....55  
2000 ....63  
1999 ....86  
1998 ....67  
1997 ....71  
1996 ....84  
1995 ....72  
1994 ....76  
1993 ....64  
1992 ....60  
1991 ....63  
1990 ....64  
1989 ....63  
1988 ....66  
1987 ....64  
1986 ....62  
1985 ....64  
1984 ....65  
1983 ....52  
1982 ....71  
1981 ....64  
1980 ....68  
1979 ....74  
1978 ....82  
1977 ....68  
1976 ....72  
1975 ....77  
1974 ....61  
1973 ....61  
1972 ....67  
1971 ....45  
1970 ....47  
1969 ....54  
1968 ....61  
1967 ....58  
1966 ....48  
1965 ....50  
1964 ....32  
1963 ....44  
1962 ....52  
1961 ....57  
1960 ....59  
1959 ....60

**SETON CATHOLIC (CHANDLER)  
"Sentinels"**

2005 ....583  
2004 ....605  
2003 ....594  
2002 ....577  
2001 ....536  
2000 ....503

1999 ....493  
1998 ....470  
1997 ....417  
1996 ....374  
1995 ....378  
1994 ....343  
1993 ....265  
1992 ....227  
1991 ....211  
1990 ....185  
1989 ....197  
1988 ....277  
1987 ....273  
1986 ....249  
1985 ....234  
1984 ....201  
1983 ....259  
1982 ....138  
1981 ....126  
1980 ....141  
1979 ....137  
1978 ....142  
1977 ....150  
1976 ....157  
1975 ....149  
1974 ....176  
1973 ....175  
1972 ....169  
1971 ....120  
1970 ....180  
1969 ....188  
1968 ....170  
1967 ....162  
1966 ....185  
1965 ....205  
1964 ....190  
1963 ....193  
1962 ....163  
1961 ....119  
1960 ....120  
1959 ....(unk.)  
1958 ....97  
1957 ....(unk.)  
1956 ....(unk.)  
1955 ....(unk.)

**SHADOW MOUNTAIN (PHOENIX)  
"Matadors"**

2005 ....1,946  
2004 ....1,905  
2003 ....1,896  
2002 ....1,861  
2001 ....1,864  
2000 ....1,867  
1999 ....1,920  
1998 ....1,906  
1997 ....1,969  
1996 ....1,900  
1995 ....1,861  
1994 ....1,930  
1993 ....2,093

1992 ....2,130  
 1991 ....2,170  
 1990 ....2,151  
 1989 ....2,270  
 1988 ....  
 1987 ....2,477  
 1986 ....2,507  
 1985 ....2,384  
 1984 ....2,393  
 1983 ....2,396  
 1982 ....2,429  
 1981 ....2,532  
 1980 ....2,703  
 1979 ....2,632  
 1978 ....  
 1977 ....  
 1976 ....1,606  
 1975 ....

**SHONTO PREP**  
**“Grizzlies”**

2005 ....151  
 2004 ....153  
 2003 ....144  
 2002 ....120  
 2001 ....90

**SHOW LOW**  
**“Cougars”**

2005 ....819  
 2004 ....866  
 2003 ....878  
 2002 ....831  
 2001 ....789  
 2000 ....713  
 1999 ....698  
 1998 ....757  
 1997 ....726  
 1996 ....676  
 1995 ....618  
 1994 ....598  
 1993 ....566  
 1992 ....524  
 1991 ....501  
 1990 ....512  
 1989 ....514  
 1988 ....503  
 1987 ....531  
 1986 ....517  
 1985 ....491  
 1984 ....453  
 1983 ....486  
 1982 ....460  
 1981 ....449  
 1980 ....443  
 1979 ....429  
 1978 ....383  
 1977 ....367  
 1976 ....361  
 1975 ....345  
 1974 ....179

1973 ....193

**SINAGUA (FLAGSTAFF)**  
**“Mustangs”**

2005 ....1,022  
 2004 ....1,030  
 2003 ....1,026  
 2002 ....1,017  
 2001 ....992  
 2000 ....990  
 1999 ....1,015  
 1998 ....977  
 1997 ....1,024  
 1996 ....1,091  
 1995 ....1,029  
 1994 ....1,064  
 1993 ....1,015  
 1992 ....971  
 1991 ....698  
 1990 ....486

**SKYLINE (MESA)**

**“Coyotes”**  
 \*2005 ..2,318  
 \*2004 ..2,281  
 \*2003 ..2,249  
 \*2002 ..2,090  
 \*2001 ..2,159  
 \*2000 ..1,397

**SNOWFLAKE**

**“Lobos”**  
 2005 ....791  
 2004 ....779  
 2003 ....758  
 2002 ....709  
 2001 ....774

2000 ....754  
 1999 ....766  
 1998 ....820  
 1997 ....795  
 1996 ....845  
 1995 ....849  
 1994 ....771  
 1993 ....746  
 1992 ....674  
 1991 ....613  
 1990 ....632  
 1989 ....734  
 1988 ....739  
 1987 ....741  
 1986 ....734  
 1985 ....834  
 1984 ....747  
 1983 ....751  
 1982 ....715  
 1981 ....753  
 1980 ....755  
 1979 ....790  
 1978 ....776  
 1977 ....732  
 1976 ....702  
 1975 ....695  
 1974 ....698  
 1973 ....855  
 1972 ....845  
 1971 ....748  
 1970 ....746  
 1969 ....690  
 1968 ....588  
 1967 ....592  
 1966 ....564  
 1965 ....560  
 1964 ....542



*Original St. Johns High School*

1963 ....486  
1962 ....456  
1961 ....403  
1960 ....375  
1959 ....357  
1958 ....355  
1957 ....349  
1956 ....348  
1955 ....332  
1954 ....301  
1953 ....275  
1952 ....243  
1951 ....234  
1950 ....216  
1949 ....203  
1948 ....215  
1947 ....221  
1946 ....213  
1945 ....210  
1944 ....198  
1943 ....200  
1942 ....205  
1941 ....222  
1940 ....228  
1939 ....250  
1938 ....210  
1937 ....227  
1936 ....219  
1935 ....205  
1934 ....200  
1933 ....238  
1932 ....216  
1931 ....174  
1930 ....167  
1929 ....138  
1928 ....175  
1927 ....154  
1926 ....139  
1925 ....124  
1924 ....90  
1923 ....110  
1922 ....100  
1921 ....92  
1920 ....88  
1919 ....85  
1918 ....90  
1917 ....89  
1916 ....65  
1915 ....85  
1914 ....(unk.)

**SOUTH MOUNTAIN (PHOENIX)  
"Jaguars"**

2005 ....2,194  
2004 ....2,145  
2003 ....2,228  
2002 ....2,222  
2001 ....2,331  
2000 ....2,575  
1999 ....3,223  
1998 ....3,356

1997 ....3,333  
1996 ....3,335  
1995 ....3,505  
1994 ....3,363  
1993 ....3,304  
1992 ....3,090  
1991 ....2,681  
1990 ....2,702  
1989 ....2,693  
1988 ....3,087  
1987 ....2,755  
1986 ....2,696  
1985 ....2,460  
1984 ....2,393  
1983 ....1,956  
1982 ....1,815  
1981 ....1,886  
1980 ....2,021  
1979 ....2,120  
1978 ....2,057  
1977 ....2,219  
1976 ....2,163  
1975 ....2,529  
1974 ....2,654  
1973 ....2,950  
1972 ....2,977  
1971 ....2,774  
1970 ....2,756  
1969 ....2,796  
1968 ....2,953  
1967 ....2,966  
1966 ....2,960  
1965 ....2,840  
1964 ....2,765  
1963 ....2,604  
1962 ....2,340  
1961 ....2,169  
1960 ....1,969  
1959 ....1,834  
1958 ....1,679  
1957 ....1,395  
1956 ....1,197  
1955 .... 898  
1954 .... 507

**SOUTHWEST INDIAN SCHOOL  
(PEORIA)**

**"Chiefs"**  
1982 ....73  
1981 ....75  
1980 ....87  
1979 ....78

**ST. AUGUSTINE (TUCSON)**

**"Wolves"**  
2005 ....85 (2)  
2004 ....58 (1)

**ST. DAVID**

**"Tigers"**  
2005 ....159

2004 ....171  
2003 ....164  
2002 ....149  
2001 ....155  
2000 ....145  
1999 ....147  
1998 ....140  
1997 ....140  
1996 ....127  
1995 ....132  
1994 ....154  
1993 ....148  
1992 ....133  
1991 ....135  
1990 ....125  
1989 ....116  
1988 ....103  
1987 ....105  
1986 ....101  
1985 ....94  
1984 ....103  
1983 ....102  
1982 ....110  
1981 ....106  
1980 ....114  
1979 ....129  
1978 ....124  
1977 ....124  
1976 ....124  
1975 ....105  
1974 ....123  
1973 ....122  
1972 ....129  
1971 ....110  
1970 ....100  
1969 ....102  
1968 ....97  
1967 ....93  
1966 ....90  
1965 ....81  
1964 ....78  
1963 ....70  
1962 ....68  
1961 ....72  
1960 ....58  
1959 ....75  
1958 ....71  
1957 ....73  
1956 ....79  
1955 ....92  
1954 ....82  
1953 ....67

**ST. GREGORY (TUCSON)**

**"Hawks"**  
2005 ....210  
2004 ....227  
2003 ....240  
2002 ....238  
2001 ....252  
2000 ....225



1999 ....206  
 1998 ....206  
 1997 ....185  
 1996 ....192  
 1995 ....182  
 1994 ....185  
 1993 ....188  
 1982 ....179  
 1981 ....(unk.)

**ST. JOHNS  
 "Redskins"**

2005 ....390  
 2004 ....384  
 2003 ....368  
 2002 ....360  
 2001 ....390  
 2000 ....385  
 1999 ....414  
 1998 ....446  
 1997 ....469  
 1996 ....448  
 1995 ....453  
 1994 ....434  
 1993 ....424  
 1992 ....420  
 1991 ....400  
 1990 ....425  
 1989 ....410  
 1988 ....412  
 1987 ....409  
 1986 ....374  
 1985 ....372  
 1984 ....360  
 1983 ....385  
 1982 ....335  
 1981 ....345  
 1980 ....386  
 1979 ....406  
 1978 ....232  
 1977 ....253  
 1976 ....215  
 1975 ....175  
 1974 ....173  
 1973 ....186  
 1972 ....175  
 1971 ....170  
 1970 ....167  
 1969 ....152  
 1968 ....169  
 1967 ....154  
 1966 ....156  
 1965 ....146  
 1964 ....158  
 1963 ....147  
 1962 ....139  
 1961 ....142  
 1960 ....129  
 1959 ....134  
 1958 ....136  
 1957 ....162

1956 ....120  
 1955 ....118  
 1954 ....118  
 1953 ....135  
 1952 ....133  
 1951 ....135  
 1950 ....125  
 1949 ....120  
 1948 ....115  
 1947 ....103  
 1946 ....100  
 1945 ....104  
 1944 ....111  
 1943 ....117  
 1942 ....147  
 1941 ....148  
 1940 ....150  
 1939 ....165

**ST. JOHNS INDIAN SCHOOL  
 (LAVEEN)**

**"Crusaders"**  
 1976 ....191  
 1975 ....227  
 1974 ....291  
 1973 ....265  
 1972 ....272  
 1971 ....272  
 1970 ....259  
 1969 ....258  
 1968 ....272  
 1967 ....274  
 1966 ....(unk.)

**ST. JOSEPH'S ACADEMY  
 (PRESCOTT)**

**"Dons"**  
 1966 ....  
 1965 ....  
 1964 ....  
 1963 ....  
 1962 ....  
 1961 ....  
 1960 ....

**ST. MARY'S (PHOENIX)  
 "Knights"**

2005 ....824  
 2004 ....782  
 2003 ....831  
 2002 ....887  
 2001 ....827  
 2000 ....834  
 1999 ....774  
 1998 ....747  
 1997 ....750  
 1996 ....720  
 1995 ....679  
 1994 ....662  
 1993 ....652  
 1992 ....594  
 1991 ....664  
 1990 ....674  
 1989 ....598  
 1988 ....509  
 1987 ....565  
 1986 ....603  
 1985 ....562  
 1984 ....597  
 1983 ....555



*Old Superior High School*

1982 ....540  
 1981 ....530  
 1980 ....554  
 1979 ....536  
 1978 ....550  
 1977 ....604  
 1976 ....639  
 1975 ....603  
 1974 ....564  
 1973 ....615  
 1972 ....640  
 1971 ....683  
 1970 ....683  
 1969 ....680  
 1968 ....650  
 1967 ....611  
 1966 ....566  
 1965 ....592  
 1964 ....616  
 1963 ....632  
 1962 ....646  
 1961 ....666  
 1960 ....752  
 1959 ....768  
 1958 ....697  
 1957 ....708  
 1956 ....682  
 1955 ....682  
 1954 ....640  
 1953 ....689  
 1952 ....641  
 1951 ....665  
 1950 ....475  
 1949 ....437  
 1948 ....643  
 1947 ....543  
 1946 ....433  
 1945 ....364  
 1944 ....336  
 1943 ....308  
 1942 ....302  
 1941 ....275  
 1940 ....unk.  
 1939 ....unk.

**ST. MICHAEL (ST. MICHAELS)**  
**"Cardinals"**

2005 ....166  
 2004 ....166  
 2003 ....159  
 2002 ....179  
 2001 ....177  
 2000 ....197  
 1999 ....159  
 1998 ....149  
 1997 ....132  
 1996 ....133  
 1995 ....132  
 1994 ....117  
 1993 ....121  
 1992 ....107

1991 ....98  
 1990 ....96  
 1989 ....90  
 1988 ....91  
 1987 ....92  
 1986 ....89  
 1985 ....95  
 1984 ....99  
 1983 ....90  
 1982 ....81  
 1981 ....90  
 1980 ....87  
 1979 ....96  
 1978 ....(unk.)  
 1977 ....(unk.)  
 1976 ....132  
 1975 ....(unk.)

**ST. PAUL'S PREP (PHOENIX)**  
**"Lions"**

2005 ....57  
 2004 ....63  
 2003 ....67  
 2002 ....65  
 2001 ....70  
 2000 ....68  
 1999 ....67  
 1998 ....60  
 1997 ....63

**SUFFOLK HILLS CATHOLIC**  
**(TUCSON)**  
**"Rebels"**

1989 ....64  
 1988 ....76  
 1987 ....85  
 1986 ....85  
 1985 ....152

1984 ....169  
 1983 ....152  
 1982 ....137  
 1981 ....148  
 1980 ....173  
 1979 ....183  
 1978 ....(unk.)

**SUNNYSIDE (TUCSON)**  
**"Blue Devils"**

2005 ....2,086  
 2004 ....1,984  
 2003 ....1,894  
 2002 ....1,892  
 2001 ....1,739  
 2000 ....1,762  
 1999 ....1,882  
 1998 ....1,906  
 1997 ....2,110  
 1996 ....2,067  
 1995 ....2,175  
 1994 ....2,055  
 1993 ....1,899  
 1992 ....1,877  
 1991 ....1,764  
 1990 ....1,685  
 1989 ....1,692  
 1988 ....1,700  
 1987 ....1,755  
 1986 ....1,913  
 1985 ....2,944  
 1984 ....3,092  
 1983 ....3,000  
 1982 ....2,809  
 1981 ....2,879  
 1980 ....2,005  
 1979 ....2,121  
 1978 ....2,085



*Original Tempe Union High School*

1977 ....2,051  
 1976 ....2,023  
 1975 ....2,588  
 1974 ....2,335  
 1973 ....2,061  
 1972 ....1,912  
 1971 ....1,822  
 1970 ....1,716  
 1969 ....1,661  
 1968 ....1,525  
 1967 ....1,471  
 1966 ....1,200  
 1965 ....1,175  
 1964 ....1,125  
 1963 ....1,100  
 1962 ....1,085  
 1961 ....1,075  
 1960 ....1,000  
 1959 ....800  
 1958 ....775  
 1957 ....575  
 1956 ....250

**SUNNYSLOPE (PHOENIX)**  
**“Vikings”**

2005 ....1,587  
 2004 ....1,618  
 2003 ....1,646  
 2002 ....1,629  
 2001 ....1,481  
 2000 ....1,306  
 1999 ....1,236  
 1998 ....1,239  
 1997 ....1,248  
 1996 ....1,262  
 1995 ....1,184  
 1994 ....1,178  
 1993 ....1,256  
 1992 ....1,176  
 1991 ....1,181  
 1990 ....1,184  
 1989 ....1,221  
 1988 ....1,220  
 1987 ....1,570  
 1986 ....1,564  
 1985 ....1,539  
 1984 ....1,460  
 1983 ....1,407  
 1982 ....1,433  
 1981 ....1,536  
 1980 ....1,671  
 1979 ....1,738  
 1978 ....1,849  
 1977 ....1,907  
 1976 ....1,890  
 1975 ....1,906  
 1974 ....1,881  
 1973 ....1,865  
 1972 ....1,804  
 1971 ....1,811  
 1970 ....1,744

1969 ....1,663  
 1968 ....1,537  
 1967 ....1,466  
 1966 ....1,463  
 1965 ....1,386  
 1964 ....1,382  
 1963 ....1,258  
 1962 ....1,223  
 1961 ....1,055  
 1960 .... 946  
 1959 .... 906  
 1958 .... 814  
 1957 .... 738  
 1956 .... 652  
 1955 .... 580  
 1954 .... 407

**SUNRISE MOUNTAIN (PEORIA)**  
**“Mustangs”**

2005 ....2,404  
 2004 ....2,304  
 2003 ....2,318  
 2002 ....2,140  
 2001 ....1,812  
 2000 ....1,548  
 1999 ....1,599  
 1998 ....480 (2)  
 1997 ....235 (1)

**SUPERIOR**  
**“Panthers”**

2005 ....163  
 2004 ....160  
 2003 ....166  
 2002 ....173  
 2001 ....180  
 2000 ....188  
 1999 ....190  
 1998 ....196

1997 ....207  
 1996 ....192  
 1995 ....191  
 1994 ....181  
 1993 ....186  
 1992 ....190  
 1991 ....203  
 1990 ....221  
 1989 ....246  
 1988 ....252  
 1987 ....248  
 1986 ....243  
 1985 ....244  
 1984 ....241  
 1983 ....234  
 1982 ....324  
 1981 ....358  
 1980 ....356  
 1979 ....405  
 1978 ....342  
 1977 ....397  
 1976 ....418  
 1975 ....438  
 1974 ....467  
 1973 ....477  
 1972 ....466  
 1971 ....498  
 1970 ....487  
 1969 ....455  
 1968 ....437  
 1967 ....446  
 1966 ....448  
 1965 ....425  
 1964 ....382  
 1963 ....350  
 1962 ....352  
 1961 ....278  
 1960 ....335  
 1959 ....247



***Tolleson Union High School***



1958 ....283  
 1957 ....263  
 1956 ....277  
 1955 ....257  
 1954 ....252  
 1953 ....244  
 1952 ....197  
 1951 ....175  
 1950 ....166  
 1949 ....145  
 1948 ....175  
 1947 ....177  
 1946 ....168  
 1945 ....174  
 1944 ....180  
 1943 ....220  
 1942 ....198  
 1941 ....202  
 1940 ....187  
 1939 ....172  
 1938 ....179  
 1937 ....168  
 1936 ....176  
 1935 ....166  
 1934 ....153  
 1933 ....152  
 1932 ....140  
 1931 ....121  
 1930 ....118  
 1929 ....112  
 1928 ....103  
 1927 ....78

**SURREY GARDEN (GILBERT)  
 "Knights"**

2005 ....33  
 2004 ....72  
 2003 ....56

**TEMPE UNION  
 "Buffaloes"**

2005 ....1,323  
 2004 ....1,370  
 2003 ....1,391  
 2002 ....1,322  
 2001 ....1,436  
 2000 ....1,382  
 1999 ....1,341  
 1998 ....1,484  
 1997 ....1,369  
 1996 ....1,310  
 1995 ....1,410  
 1994 ....1,343  
 1993 ....1,336  
 1992 ....1,451  
 1991 ....1,626  
 1990 ....1,592  
 1989 ....1,748  
 1988 ....1,889  
 1987 ....1,889  
 1986 ....1,805

1985 ....1,698  
 1984 ....1,720  
 1983 ....1,644  
 1982 ....1,702  
 1981 ....1,658  
 1980 ....1,705  
 1979 ....1,960  
 1978 ....(unk.)  
 1977 ....(unk.)  
 1976 ....2,025  
 1975 ....1,713  
 1974 ....1,845  
 1973 ....1,950  
 1972 ....2,080  
 1971 ....1,961  
 1970 ....1,807  
 1969 ....1,584  
 1968 ....1,582  
 1967 ....1,779  
 1966 ....1,787  
 1965 ....1,945  
 1964 ....2,308  
 1963 ....1,936  
 1962 ....1,666  
 1961 ....1,525  
 1960 ....1,309  
 1959 ....1,159  
 1958 ....1,023  
 1957 ....863  
 1956 ....803  
 1955 ....796  
 1954 ....720  
 1953 ....608  
 1952 ....550  
 1951 ....492  
 1950 ....417  
 1949 ....400  
 1948 ....392

1947 ....380  
 1946 ....311  
 1945 ....284  
 1944 ....  
 1943 ....307  
 1942 ....337  
 1941 ....348  
 1940 ....392  
 1939 ....408  
 1938 ....288  
 1937 ....268  
 1936 ....(unk.)  
 1935 ....(unk.)  
 1934 ....(unk.)  
 1933 ....(unk.)  
 1932 ....(unk.)  
 1931 ....214  
 1930 ....211  
 1929 ....179  
 1928 ....182  
 1927 ....149  
 1926 ....145  
 1925 ....145  
 1924 ....142

**TEMPE PREP  
 "Knights"**

2005 ....202  
 2004 ....187  
 2003 ....124  
 2002 ....149  
 2001 ....124  
 2000 ....107  
 1999 ....65  
 1998 ....54



*Tombstone High School*

**THATCHER  
"Eagles"**

2005 ....394  
2004 ....399  
2003 ....411  
2002 ....387  
2001 ....418  
2000 ....435  
1999 ....442  
1998 ....468  
1997 ....449  
1996 ....452  
1995 ....433  
1994 ....437  
1993 ....435  
1992 ....414  
1991 ....390  
1990 ....383  
1989 ....365  
1988 ....346  
1987 ....335  
1986 ....312  
1985 ....324  
1984 ....328  
1983 ....319  
1982 ....322  
1981 ....310  
1980 ....320  
1979 ....324  
1978 ....342  
1977 ....315  
1976 ....315  
1975 ....281  
1974 ....240  
1973 ....233  
1972 ....241  
1971 ....219  
1970 ....200  
1969 ....185  
1968 ....169  
1967 ....169  
1966 ....198  
1965 ....191  
1964 ....181  
1963 ....165  
1962 ....169  
1961 ....121  
1960 ....180  
1959 ....183  
1958 ....157  
1957 ....142  
1956 ....136  
1955 ....127  
1954 ....139  
1953 ....141  
1952 ....107  
1951 ....105  
1950 ....140  
1949 ....126  
1948 ....139  
1947 ....148

1946 ....142  
1945 ....137  
1944 ....129  
1943 ....139  
1942 ....175  
1941 ....146  
1940 ....187  
1939 ....228  
1938 ....183  
1937 ....177  
1936 ....175  
1935 ....137  
1934 ....(unk.)  
1933 ....(unk.)  
1932 ....(unk.)  
1931 ....177  
1930 ....189  
1929 ....(unk.)

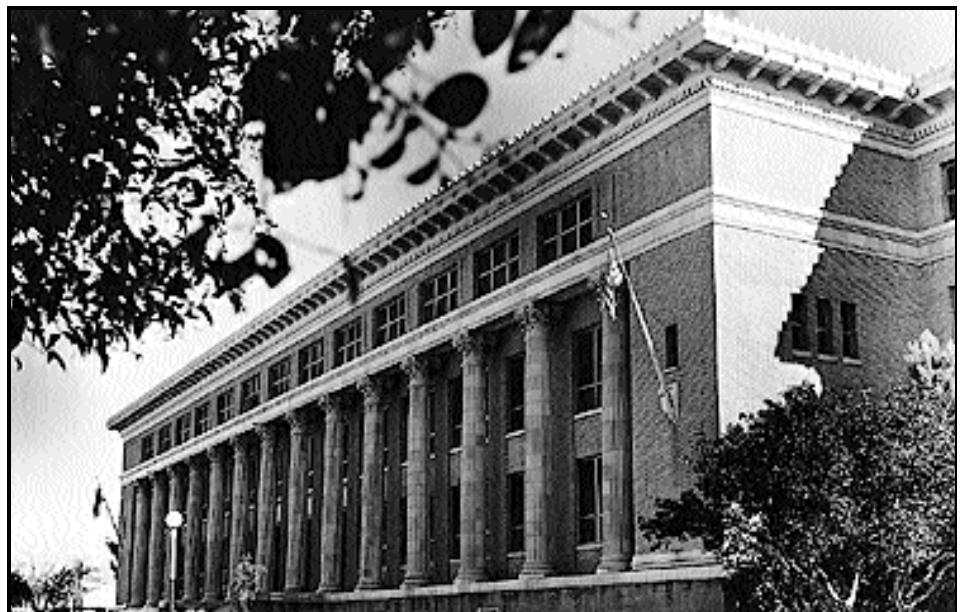
**THUNDERBIRD (PHOENIX)  
"Chiefs"**

2005 ....1,727  
2004 ....1,673  
2003 ....1,747  
2002 ....1,826  
2001 ....1,773  
2000 ....1,796  
1999 ....1,763  
1998 ....1,764  
1997 ....1,716  
1996 ....1,642  
1995 ....1,591  
1994 ....1,612  
1993 ....1,620  
1992 ....1,565  
1991 ....1,552  
1990 ....1,574  
1989 ....1,689  
1988 ....1,813

1987 ....1,942  
1986 ....1,979  
1985 ....1,982  
1984 ....2,026  
1983 ....2,044  
1982 ....2,204  
1981 ....2,434  
1980 ....2,652  
1979 ....2,742  
1978 ....2,534  
1977 ....2,332  
1976 ....2,101  
1975 ....1,387  
1974 ....1,153  
1973 ....816

**TOHONO O'ODHAM (SELLS)  
"Eagles"**

2005 ....164  
2004 ....152  
2003 ....155  
2002 ....146  
2001 ....148  
2000 ....156  
1999 ....177  
1998 ....170  
1997 ....170  
1996 ....196  
1995 ....203  
1994 ....197  
1993 ....212  
1992 ....201  
1991 ....207  
1990 ....234  
1989 ....202  
1988 ....206  
1987 ....210



*Tucson High School*

**TOLLESON**  
**“Wolverines”**

2005 ....1,941  
2004 ....2,092  
2003 ....2,192  
2002 ....2,114  
2001 ....1,878  
2000 ....1,819  
1999 ....1,702  
1998 ....1,560  
1997 ....1,488  
1996 ....1,367  
1995 ....1,403  
1994 ....1,294  
1993 ....1,339  
1992 ....1,569  
1991 ....1,769  
1990 ....1,972  
1989 ....2,203  
1988 ....2,178  
1987 ....2,095  
1986 ....2,092  
1985 ....2,009  
1984 ....1,970  
1983 ....1,763  
1982 ....1,640  
1981 ....1,698  
1980 ....1,646  
1979 ....1,591  
1978 ....1,478  
1977 ....1,318  
1976 ....1,148  
1975 ....963  
1974 ....1,053  
1973 ....933  
1972 ....834  
1971 ....744  
1970 ....706  
1969 ....691  
1968 ....652  
1967 ....634  
1966 ....599  
1965 ....610  
1964 ....581  
1963 ....540  
1962 ....467  
1961 ....434  
1960 ....389  
1959 ....404  
1958 ....376  
1957 ....345  
1956 ....405  
1955 ....378  
1954 ....351  
1953 ....350  
1952 ....371  
1951 ....346  
1950 ....311  
1949 ....291  
1948 ....172  
1947 ....216

1946 ....173  
1945 ....130  
1944 ....(unk.)  
1943 ....(unk.)  
1942 ....155

**TOMBSTONE**  
**“Yellowjackets”**

2005 ....353  
2004 ....351  
2003 ....337  
2002 ....330  
2001 ....341  
2000 ....332  
1999 ....324  
1998 ....330  
1997 ....324  
1996 ....348  
1995 ....335  
1994 ....307  
1993 ....298  
1992 ....282  
1991 ....291  
1990 ....294  
1989 ....307  
1988 ....315  
1987 ....323  
1986 ....293  
1985 ....291  
1984 ....317  
1983 ....309  
1982 ....301  
1981 ....328  
1980 ....341  
1979 ....334  
1978 ....302  
1977 ....257  
1976 ....292

1975 ....254  
1974 ....243  
1973 ....240  
1972 ....232  
1971 ....224  
1970 ....210  
1969 ....193  
1968 ....188  
1967 ....184  
1966 ....185  
1965 ....184  
1964 ....166  
1963 ....146  
1962 ....143  
1961 ....122  
1960 ....108  
1959 ....310  
1958 ....221  
1957 ....215  
1956 ....157  
1955 ....132  
1954 ....75  
1953 ....107  
1952 ....111  
1951 ....70  
1950 ....87  
1949 ....62  
1948 ....65  
1947 ....102  
1946 ....96  
1945 ....90  
1944 ....87  
1943 ....91  
1942 ....125  
1941 ....90  
1940 ....98  
1939 ....107  
1938 ....100



*Washington High School Ram.*



1937 ....104  
 1936 ....104  
 1935 ....89  
 1934 ....81  
 1933 ....76  
 1932 ....74  
 1931 ....62  
 1930 ....58  
 1929 ....53  
 1928 ....48  
 1927 ....43  
 1926 ....(unk.)  
 1925 ....(unk.)  
 1924 ....70  
 1923 ....(unk.)

**TREVOR G. BROWNE (PHOENIX)**  
**“Bruins”**

2005 ....2,645  
 2004 ....2,614  
 2003 ....2,573  
 2002 ....2,695  
 2001 ....2,767  
 2000 ....2,639  
 1999 ....2,524  
 1998 ....2,663  
 1997 ....2,374  
 1996 ....2,451  
 1995 ....2,265  
 1994 ....2,317  
 1993 ....2,339  
 1992 ....2,276  
 1991 ....2,328  
 1990 ....2,415  
 1989 ....2,560  
 1988 ....3,059  
 1987 ....2,577  
 1986 ....2,517  
 1985 ....2,364  
 1984 ....2,303  
 1983 ....2,315  
 1982 ....2,343  
 1981 ....2,452  
 1980 ....2,579  
 1979 ....2,732  
 1978 ....2,741  
 1977 ....2,779  
 1976 ....2,688  
 1975 ....2,405  
 1974 ....2,080  
 1973 ....2,074

**TUBA CITY**  
**“Warriors”**

2005 ....948  
 2004 ....1,016  
 2003 ....921  
 2002 ....909  
 2001 ....915  
 2000 ....874  
 1999 ....800

1998 ....892  
 1997 ....898  
 1996 ....867  
 1995 ....860  
 1994 ....884  
 1993 ....744  
 1992 ....724  
 1991 ....709  
 1990 ....851  
 1989 ....1,341  
 1988 ....1,330  
 1987 ....1,319  
 1986 ....1,397  
 1985 ....1,403  
 1984 ....1,552  
 1983 ....1,405  
 1982 ....1,458  
 1981 ....1,536  
 1980 ....1,485  
 1979 ....1,612  
 1978 ....(unk.)  
 1977 ....(unk.)  
 1976 ....1,195  
 1975 ....946  
 1974 ....565  
 1973 ....545  
 1972 ....429  
 1971 ....375  
 1970 ....342  
 1969 ....335  
 1968 ....318  
 1967 ....297

**TUCSON HIGH**  
**“Badgers”**

2005 ....2,906  
 2004 ....2,804  
 2003 ....2,632  
 2002 ....2,490

2001 ....2,437  
 2000 ....2,183  
 1999 ....2,263  
 1998 ....2,238  
 1997 ....2,427  
 1996 ....2,470  
 1995 ....2,242  
 1994 ....2,231  
 1993 ....2,052  
 1992 ....2,101  
 1991 ....2,213  
 1990 ....2,232  
 1989 ....2,300  
 1988 ....2,153  
 1987 ....2,153  
 1986 ....2,172  
 1985 ....1,933  
 1984 ....1,789  
 1983 ....1,630  
 1982 ....1,624  
 1981 ....1,787  
 1980 ....1,985  
 1979 ....2,129  
 1978 ....2,140  
 1977 ....2,282  
 1976 ....2,800  
 1975 ....2,106  
 1974 ....2,293  
 1973 ....2,368  
 1972 ....2,477  
 1971 ....2,546  
 1970 ....2,727  
 1969 ....3,050  
 1968 ....3,011  
 1967 ....2,935  
 1966 ....3,296  
 1965 ....3,224  
 1964 ....3,245  
 1963 ....3,209



*Westview High School*

1962 ....2,987  
1961 ....2,657  
1960 ....2,595  
1959 ....2,852  
1958 ....3,838  
1957 ....3,939  
1956 ....4,888  
1955 ....4,250  
1954 ....3,920  
1953 ....3,624  
1952 ....3,252  
1951 ....3,140  
1950 ....3,106  
1949 ....2,989  
1948 ....2,952  
1947 ....2,864  
1946 ....2,623  
1945 ....2,258  
1944 ....2,250  
1943 ....2,265  
1942 ....2,351  
1941 ....2,268  
1940 ....2,216  
1939 ....2,190  
1938 ....1,979  
1937 ....1,863  
1936 ....1,688  
1935 ....1,574  
1934 ....1,452  
1933 ....1,462  
1932 ....1,335  
1931 ....1,259  
1930 ....1,646  
1929 ....1,481  
1928 ....1,328  
1927 ....1,258  
1926 ....1,191  
1925 ....1,113  
1924 ....1,078  
1923 .... 914  
1922 .... 856  
1921 .... 749  
1920 .... 538

**VALLEY CHRISTIAN (CHANDLER)**

**“Trojans”**

2005 ....407  
2004 ....388  
2003 ....356  
2002 ....374  
2001 ....369  
2000 ....330  
1999 ....292  
1998 ....292  
1997 ....264  
1996 ....224  
1995 ....201  
1994 ....230  
1993 ....198  
1992 ....213  
1991 ....232

1990 ....228  
1989 ....197  
1988 ....138  
1987 ....142  
1986 ....141  
1985 ....95  
1984 ....54  
1983 ....41  
1982 ....20

**VALLEY (SANDERS)**

**“Pirates”**

2005 ....349  
2004 ....330  
2003 ....350  
2002 ....386  
2001 ....369  
2000 ....350  
1999 ....316  
1998 ....270  
1995 ....280  
1994 ....308  
1993 ....322  
1992 ....290  
1991 ....233  
1990 ....263  
1989 ....257  
1988 ....248  
1987 ....274  
1986 ....303  
1985 ....255  
1984 ....252  
1983 ....246  
1982 ....241  
1981 ....258  
1980 ....268  
1979 ....280  
1978 ....271  
1977 ....273  
1976 ....269  
1975 ....250  
1974 ....254  
1973 ....227  
1972 ....207  
1971 ....181  
1970 ....168  
1969 ....168  
1968 ....150  
1967 ....156  
1966 ....148  
1965 ....152  
1964 ....150  
1963 ....142  
1962 ....128  
1961 ....112  
1960 ....99  
1959 ....85

**VALLEY LUTHERAN**

**“Flames”**

2005 ....104

2004 ....119  
2003 ....120  
2002 ....103  
2001 ....118  
2000 ....118

**VALLEY UNION (ELFRIDA)**

**“Blue Devils”**

2005 ....197  
2004 ....199  
2003 ....194  
2002 ....222  
2001 ....197  
2000 ....214  
1999 ....235  
1998 ....240  
1997 ....229  
1996 ....223  
1995 ....194  
1994 ....187  
1993 ....175  
1992 ....183  
1991 ....174  
1990 ....169  
1989 ....158  
1988 ....154  
1987 ....151  
1986 ....166  
1985 ....165  
1984 ....168  
1983 ....171  
1982 ....175  
1981 ....191  
1980 ....188  
1979 ....192  
1978 ....185  
1977 ....183  
1976 ....181  
1975 ....162  
1974 ....173  
1973 ....144  
1972 ....148  
1971 ....139  
1970 ....125  
1969 ....128  
1968 ....115  
1967 ....122  
1966 ....99  
1965 ....78  
1964 ....69  
1963 ....70  
1962 ....66  
1961 ....65  
1960 ....61  
1959 ....57  
1958 ....60  
1957 ....55  
1956 ....54  
1955 ....51  
1954 ....50  
1953 ....52

1952 ....50  
1951 ....49  
1950 ....47

**WASHINGTON (PHOENIX)  
"Rams"**

2005 ....1,494  
2004 ....1,545  
2003 ....1,685  
2002 ....1,605  
2001 ....1,676  
2000 ....1,617  
1999 ....1,484  
1998 ....1,431  
1997 ....1,445  
1996 ....1,354  
1995 ....1,347  
1994 ....1,312  
1993 ....1,256  
1992 ....1,176  
1991 ....1,181  
1990 ....1,184  
1989 ....1,420  
1988 ....1,450  
1987 ....1,479  
1986 ....1,461  
1985 ....1,456  
1984 ....1,549  
1983 ....1,609  
1982 ....1,646  
1981 ....1,706  
1980 ....1,809  
1979 ....1,943  
1978 ....1,957  
1977 ....1,988  
1976 ....2,005  
1975 ....2,033  
1974 ....2,107  
1973 ....2,169  
1972 ....2,132  
1971 ....2,083  
1970 ....2,035  
1969 ....2,008  
1968 ....1,968  
1967 ....1,940  
1966 ....2,036  
1965 ....2,037  
1964 ....2,011  
1963 ....1,784  
1962 ....1,635  
1961 ....1,632  
1960 ....1,885  
1959 ....1,506  
1958 ....1,254  
1957 .... 911  
1956 .... 570

**WEST (PHOENIX)  
"Thunderbirds"**

1982 ....1,723  
1981 ....1,517

1980 ....2,117  
1979 ....2,328  
1978 ....2,512  
1977 ....2,477  
1976 ....2,435  
1975 ....2,480  
1974 ....2,543  
1973 ....2,535  
1972 ....2,481  
1971 ....2,535  
1970 ....2,725  
1969 ....2,650  
1968 ....2,873  
1967 ....2,810  
1966 ....2,823  
1965 ....2,687  
1964 ....2,654  
1963 ....2,620  
1962 ....3,380  
1961 ....3,016  
1960 ....2,742  
1959 ....2,700  
1958 ....2,704  
1957 ....3,488  
1956 ....3,134  
1955 ....2,818  
1954 ....2,706  
1953 ....2,772  
1952 ....2,311  
1951 ....2,090  
1950 ....1,531

**WESTERN CHRISTIAN (PHOENIX)  
"Eagles"**

1988 ....60  
1987 ....71  
1986 ....89

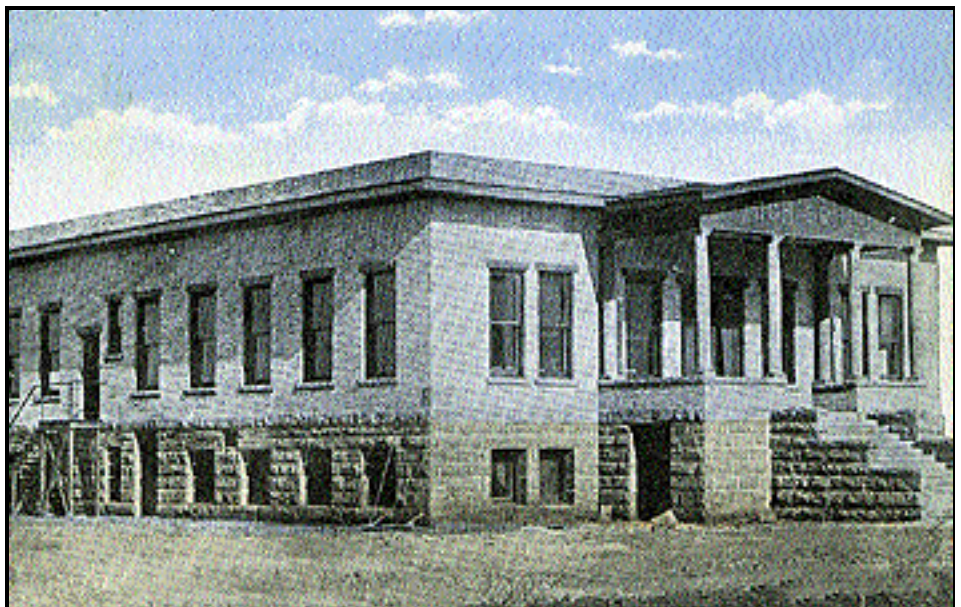
1985 ....87  
1984 ....92  
1983 ....99  
1982 ....105  
1981 ....93  
1980 ....92  
1979 ....78

**WESTVIEW (AVONDALE)  
"Knights"**

2005 ....2,477  
2004 ....2,398  
2003 ....2,480  
2002 ....2,606  
2001 ....3,069  
2000 ....2,479  
1999 ....2,345  
1998 ....2,182  
1997 ....2,075  
1996 ....1,883  
1995 ....1,751  
1994 ....1,598  
1993 ....1,499  
1992 ....1,097  
1991 ....664  
1990 ....326

**WESTWOOD (MESA)  
"Warriors"**

\*2005 ..3,228  
\*2004 ..3,205  
\*2003 ..3,117  
\*2002 ..3,347  
\*2001 ..3,069  
\*2000 ..2,270  
\*1999 ..2,310  
\*1998 ..3,402



*Original Winslow High School*



\*1997 ..3,400  
 \*1996 ..3,270  
 \*1995 ..3,300  
 \*1994 ..3,267  
 \*1993 ..3,080  
 \*1992 ..2,915  
 \*1991 ..3,106  
 \*1990 ..3,325  
 \*1989 ..3,363  
 \*1988 ..2,798  
 \*1987 ..3,733  
 1986 ....2,544  
 1985 ....2,242  
 1984 ....2,279  
 1983 ....2,180  
 1982 ....2,147  
 1981 ....2,140  
 1980 ....2,153  
 1979 ....2,054  
 1978 ....1,888  
 1977 ....2,220  
 1976 ....2,889  
 1975 ....2,705  
 1974 ....2,759  
 1973 ....2,723  
 1972 ....2,673  
 1971 ....2,578  
 1970 ....2,350  
 1969 ....2,183  
 1968 ....1,982  
 1967 ....2,651  
 1966 ....1,846  
 1965 ....2,706  
 1964 ....2,073  
 1963 ....1,285

**WICKENBURG**  
**“Wranglers”**

2005 ....646  
 2004 ....628  
 2003 ....613  
 2002 ....602  
 2001 ....629  
 2000 ....634  
 1999 ....581  
 1998 ....543  
 1997 ....551  
 1996 ....497  
 1995 ....466  
 1994 ....428  
 1993 ....374  
 1992 ....365  
 1991 ....396  
 1990 ....432  
 1989 ....447  
 1988 ....470  
 1987 ....494  
 1986 ....466  
 1985 ....481  
 1984 ....484  
 1983 ....517

1982 ....481  
 1981 ....434  
 1980 ....463  
 1979 ....460  
 1978 ....445  
 1977 ....420  
 1976 ....400  
 1975 ....393  
 1974 ....362  
 1973 ....338  
 1972 ....311  
 1971 ....290  
 1970 ....283  
 1969 ....273  
 1968 ....262  
 1967 ....268  
 1966 ....265  
 1965 ....(unk.)  
 1964 ....(unk.)  
 1963 ....277  
 1962 ....263  
 1961 ....227  
 1960 ....214  
 1959 ....204  
 1958 ....198  
 1957 ....194  
 1956 ....176  
 1955 ....184  
 1954 ....160  
 1953 ....172  
 1952 ....160  
 1951 ....142  
 1950 ....134  
 1949 ....129  
 1948 ....137  
 1947 ....135  
 1946 ....120  
 1945 ....116  
 1944 ....100

1943 ....177  
 1942 ....(unk.)  
 1941 ....(unk.)  
 1940 ....(unk.)  
 1939 ....106  
 1938 ....102  
 1937 ....99  
 1936 ....90  
 1935 ....(unk.)

**WILLCOX “Cowboys”**

2005 ....475  
 2004 ....479  
 2003 ....489  
 2002 ....519  
 2001 ....517  
 2000 ....472  
 1999 ....439  
 1998 ....453  
 1997 ....444  
 1996 ....469  
 1995 ....445  
 1994 ....449  
 1993 ....442  
 1992 ....421  
 1991 ....416  
 1990 ....443  
 1989 ....430  
 1988 ....427  
 1987 ....419  
 1986 ....395  
 1985 ....372  
 1984 ....405  
 1983 ....440  
 1982 ....445  
 1981 ....502  
 1980 ....517  
 1979 ....552  
 1978 ....523



*Yuma Union High School*

1977 ....464  
1976 ....459  
1975 ....444  
1974 ....435  
1973 ....449  
1972 ....461  
1971 ....459  
1970 ....471  
1969 ....435  
1968 ....438  
1967 ....453  
1966 ....467  
1965 ....401  
1964 ....395  
1963 ....361  
1962 ....342  
1961 ....315  
1960 ....280  
1959 ....301  
1958 ....245  
1957 ....211  
1956 ....200  
1955 ....168  
1954 ....148  
1953 ....119  
1952 ....129  
1951 ....120  
1950 ....122  
1949 ....117  
1948 ....119  
1947 ....114  
1946 ....96  
1945 ....83  
1944 ....81  
1943 ....75  
1942 ....120  
1941 ....127  
1940 ....124  
1939 ....111  
1938 ....114  
1937 ....119  
1936 ....104  
1935 ....114  
1934 ....89  
1933 ....94  
1932 ....92  
1931 ....71  
1930 ....(unk.)

**WILLIAMS "Vikings"**

2005 ....226  
2004 ....249  
2003 ....253  
2002 ....257  
2001 ....231  
2000 ....210  
1999 ....220  
1998 ....242  
1997 ....234  
1996 ....249  
1995 ....240

1994 ....200  
1993 ....173  
1992 ....179  
1991 ....173  
1990 ....163  
1989 ....162  
1988 ....163  
1987 ....171  
1986 ....173  
1985 ....186  
1984 ....181  
1983 ....197  
1982 ....205  
1981 ....219  
1980 ....218  
1979 ....239  
1978 ....243  
1977 ....252  
1976 ....243  
1975 ....241  
1974 ....243  
1973 ....255  
1972 ....269  
1971 ....258  
1970 ....240  
1969 ....208  
1968 ....214  
1967 ....229  
1966 ....222  
1965 ....207  
1964 ....222  
1963 ....220  
1962 ....231  
1961 ....225  
1960 ....220  
1959 ....176  
1958 ....181  
1957 ....184  
1956 ....166  
1955 ....177  
1954 ....166  
1953 ....149  
1952 ....142  
1951 ....134  
1950 ....142  
1949 ....127  
1948 ....142  
1947 ....118  
1946 ....116  
1945 ....117  
1944 ....112  
1943 ....150  
1942 ....154  
1941 ....146  
1940 ....142  
1939 ....145  
1938 ....97  
1937 ....105  
1936 ....88  
1935 ....107  
1934 ....105

1933 ....86  
1932 ....120  
1931 ....88  
1930 ....64  
1929 ....62  
1928 ....40  
1927 ....49  
1926 ....52  
1925 ....54  
1924 ....70  
1923 ....53  
1922 ....43  
1921 ....36  
1920 ....22

**WILLOW CANYON (SURPRISE)**

**"Wildcats"**

2005 ....1,659 (3)  
2004 ....852 (2)

**WINDOW ROCK (FORT DEFIANCE)**

**"Scouts"**

2005 ....873  
2004 ....896  
2003 ....854  
2002 ....809  
2001 ....785  
2000 ....788  
1999 ....786  
1998 ....778  
1997 ....809  
1996 ....797  
1995 ....812  
1994 ....822  
1993 ....818  
1992 ....805  
1991 ....723  
1990 ....776  
1989 ....749  
1988 ....(unk.)  
1987 ....847  
1986 ....947  
1985 ....858  
1984 ....903  
1983 ....931  
1982 ....901  
1981 ....958  
1980 ....940  
1979 ....929  
1978 ....(unk.)  
1977 ....(unk.)  
1976 ....736  
1975 ....612  
1974 ....634  
1973 ....603  
1972 ....561  
1971 ....536  
1970 ....499  
1969 ....442  
1968 ....458  
1967 ....465

**WINSLOW "Bulldogs"**

2005 ...858  
2004 ...889  
2003 ...856  
2002 ...827  
2001 ...858  
2000 ...862  
1999 ...851  
1998 ...854  
1997 ...871  
1996 ...891  
1995 ...841  
1994 ...794  
1993 ...793  
1992 ...773  
1991 ...777  
1990 ...813  
1989 ...785  
1988 ...827  
1987 ...794  
1986 ...877  
1985 ...847  
1984 ...841  
1983 ...854  
1982 ...901  
1981 ...927  
1980 ...873  
1979 ...904  
1978 ...929  
1977 ...960  
1976 ...864  
1975 ...875  
1974 ...851  
1973 ...861  
1972 ...838  
1971 ...802  
1970 ...798  
1969 ...805  
1968 ...803  
1967 ...772  
1966 ...777  
1965 ...729  
1964 ...721  
1963 ...673  
1962 ...645  
1961 ...639  
1960 ...648  
1959 ...660  
1958 ...594  
1957 ...603  
1956 ...496  
1955 ...499  
1954 ...476  
1953 ...406  
1952 ...383  
1951 ...388  
1950 ...392  
1949 ...374  
1948 ...361  
1947 ...336

1946 ...348  
1945 ...303  
1944 ...294  
1943 ...302  
1942 ...308  
1941 ...285  
1940 ...301  
1939 ...269  
1938 ...260  
1937 ...254  
1936 ...209  
1935 ...375 (6)  
1934 ...361 (6)  
1933 ...361 (6)  
1932 ...316 (6)  
1931 ...182  
1930 ...170  
1929 ...152  
1928 ...123  
1927 ...116  
1926 ...104  
1925 ...100  
1924 ...118  
1923 ...136  
1922 ...116  
1921 ...101  
1920 ...92  
1919 ...75  
1918 ...80  
1917 ...101  
1916 ...83  
1915 ...70

**XAVIER (PHOENIX)  
"Gators"**

2005 ...1,160  
2004 ...1,195  
2003 ...1,170  
2002 ...1,164  
2001 ...1,155  
2000 ...1,097  
1999 ...1,068  
1998 ...988  
1997 ...949  
1996 ...936  
1995 ...897  
1994 ...904  
1993 ...876  
1992 ...837  
1991 ...809  
1990 ...805  
1989 ...758  
1988 ...758  
1987 ...835  
1986 ...851  
1985 ...830  
1984 ...804  
1983 ...771  
1982 ...732  
1981 ...670  
1980 ...577

1979 ...549  
1978 ...550  
1977 ...531  
1976 ...499  
1975 ...502  
1974 ...500  
1973 ...514  
1972 ...505  
1971 ...490  
1970 ...453  
1969 ...446  
1968 ...438  
1967 ...477  
1966 ...468  
1965 ...488  
1964 ...514  
1963 ...505  
1962 ...521  
1961 ...506  
1960 ...436  
1959 ...390  
1958 ...345  
1957 ...316  
1956 ...438  
1955 ...403  
1954 ...336  
1953 ...324  
1952 ...285  
1951 ...267  
1950 ...235  
1949 ...173  
1948 ...136  
1947 ...121  
1946 ...52  
1945 ...37  
1944 ...12

**YUMA UNION  
"Criminals"**

2005 ...2,684  
2004 ...2,618  
2003 ...2,532  
2002 ...2,374  
2001 ...2,370  
2000 ...2,304  
1999 ...2,280  
1998 ...2,274  
1997 ...2,270  
1996 ...2,224  
1995 ...2,179  
1994 ...2,123  
1993 ...2,104  
1992 ...1,984  
1991 ...1,791  
1990 ...2,010  
1989 ...2,223  
1988 ...2,250  
1987 ...2,411  
1986 ...2,161  
1985 ...1,983  
1984 ...1,966



1983 ....1,880  
1982 ....1,894  
1981 ....1,945  
1980 ....1,933  
1979 ....1,884  
1978 ....1,859  
1977 ....1,835  
1976 ....1,811  
1975 ....1,681  
1974 ....1,606  
1973 ....1,561  
1972 ....1,552  
1971 ....1,578  
1970 ....1,538  
1969 ....1,450  
1968 ....1,456  
1967 ....1,425  
1966 ....1,397  
1965 ....1,334  
1964 ....1,350  
1963 ....1,250  
1962 ....1,200  
1961 ....1,334  
1960 ....1,540  
1959 ....2,182  
1958 ....1,904  
1957 ....1,784  
1956 ....1,702  
1955 ....1,534  
1954 ....1,367  
1953 ....1,104  
1952 ....1,010  
1951 ....1,023  
1950 ....995  
1949 ....857  
1948 ....781  
1947 ....766  
1946 ....737  
1945 ....635  
1944 ....580  
1943 ....630  
1942 ....724  
1941 ....770  
1940 ....734  
1939 ....688  
1938 ....700  
1937 ....670  
1936 ....590  
1935 ....550  
1934 ....525  
1933 ....502  
1932 ....423  
1931 ....407  
1930 ....392  
1929 ....380  
1928 ....350  
1927 ....340  
1926 ....318  
1925 ....280  
1924 ....211  
1923 ....289

1922 ....274  
1921 ....262  
1920 ....247  
1919 ....222  
1918 ....197  
1917 ....172  
1916 ....145  
1915 ....119  
1914 ....95  
1913 ....72  
1912 ....47  
1911 ....39  
1910 ....43

**YUMA CATHOLIC  
"Shamrocks"**

2005 ....349  
2004 ....370  
2003 ....277  
2002 ....178  
2001 ....69

